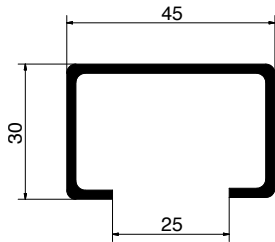


# I70 Mansion

## onderlopend rechtschuivend beslag

### Rail:



**Model:** 900

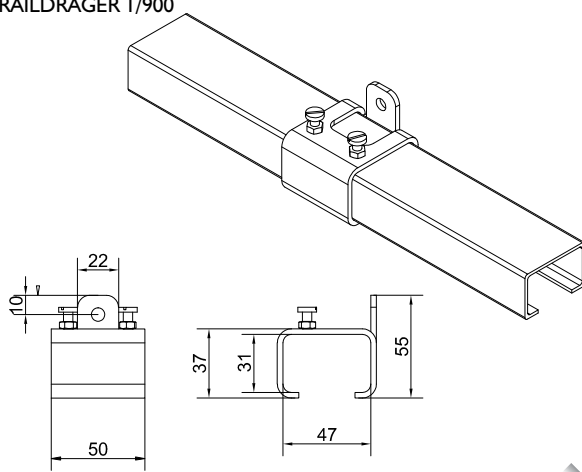
**Materiaal:** stalen buisprofiel, gegalvaniseerd volgens sendzimir procédé.

**Lengtes:** 2000, 2500 en 3000mm

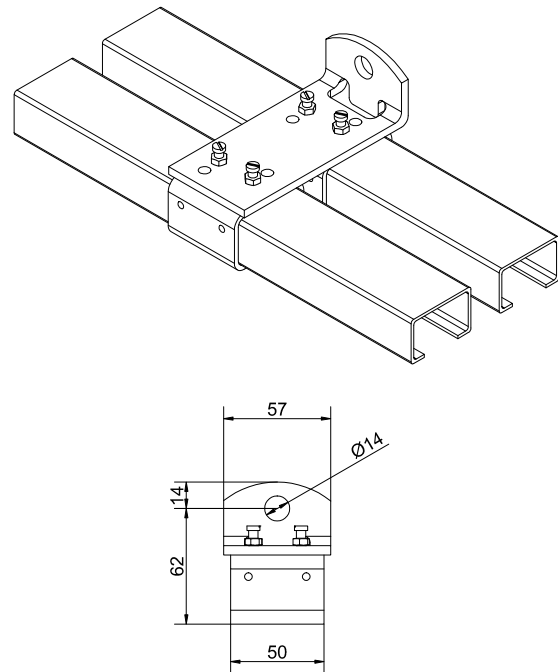
**Bevestigingsgaten:** geen

### Raildragers - wandbevestiging:

RAILDRAGER 1/900

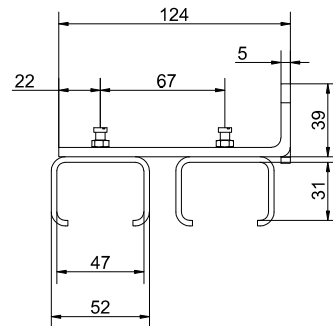
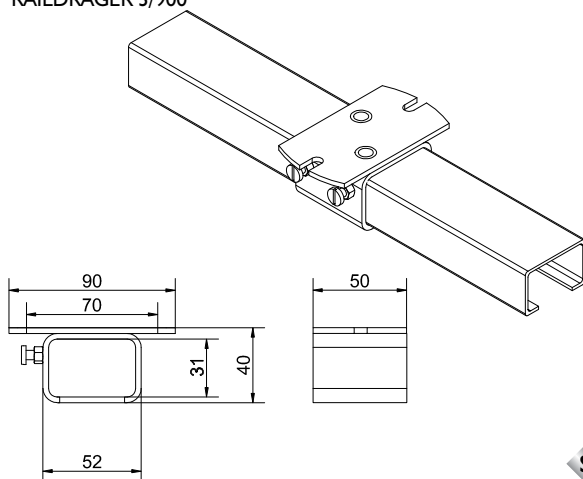


RAILDRAGER 5/900



### Raildragers - plafondbevestiging:

RAILDRAGER 3/900



### Legenda:



= Houten deur



= Staal



= Bronzen wielen



= Stalen deur



= Messing



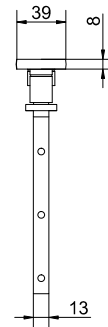
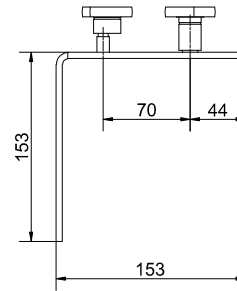
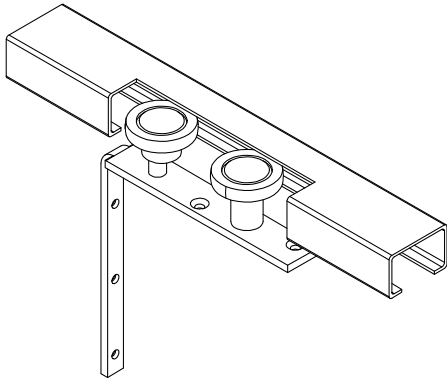
= Nylon geleidewiel

# I70 Mansion

## onderlopend rechtschuivend beslag

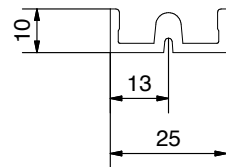
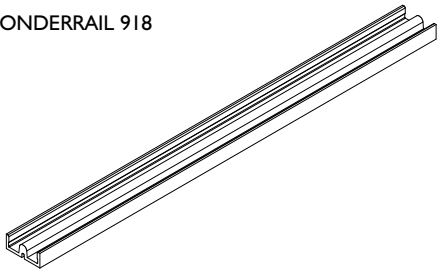
### Bovengeleiders:

BOVENGELEIDER 203/900

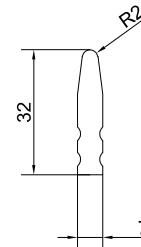
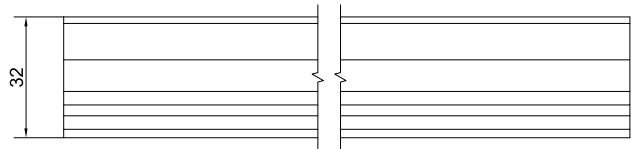


### Onderrails:

ONDERRAIL 918



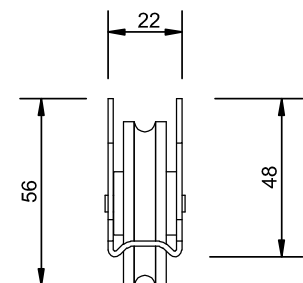
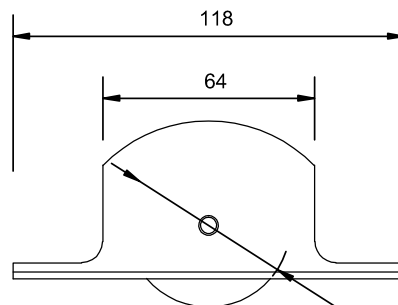
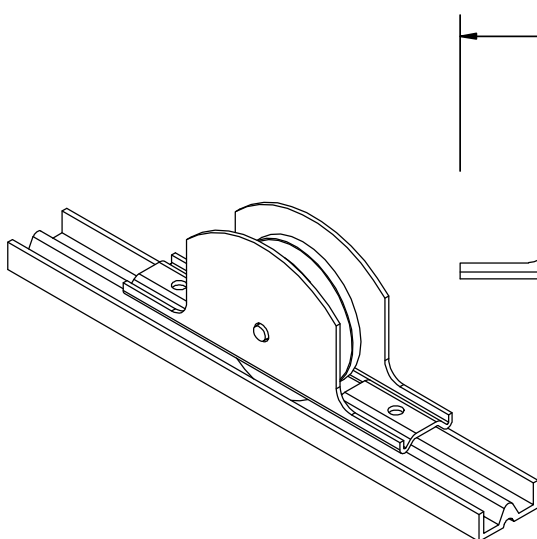
ONDERRAIL 815



I70

### Onderrollen:

ONDERROL 913XB

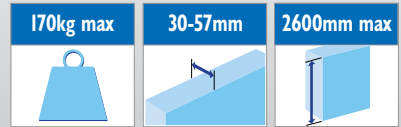


Ø49

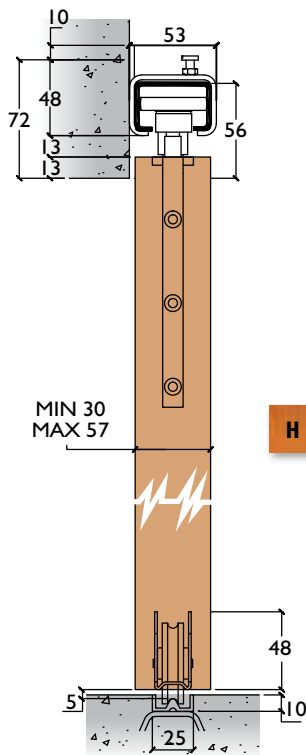
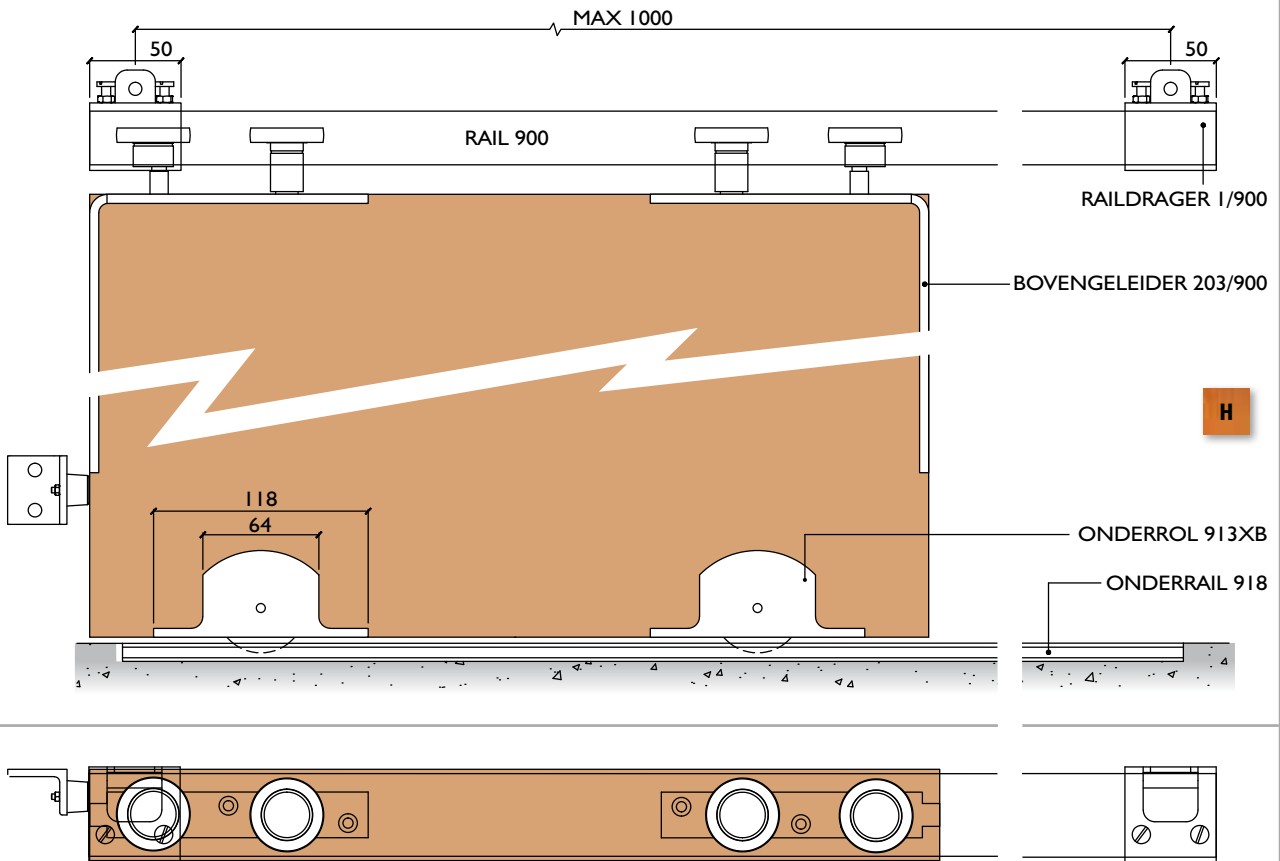


# I70 Mansion

onderlopend rechtschuivend beslag



## Stelsel opstelling: enkele rail



### Opmerking:

Het gewicht van de deur(en) wordt door de vloer gedragen, zodat een lichte bovenconstructie mogelijk is.

Elk willekeurig aantal deuren kan worden toegepast op enkele of meervoudige railbanen.

De bovengeleiderail kan tegen de onderzijde van de bovendorpel van het kozijn worden gemonteerd, indien de deur in de dagopening schuift of tegen de zijwand als de deur geheel moet wegschuiven.

Hoge onderdorpels zijn noodzakelijk (minimaal 150mm) om de onderrollen te kunnen inbouwen.