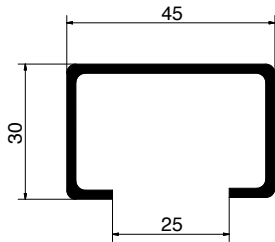


270 Majestic

onderlopend rechtschuivend beslag

Rail:



Model: 900

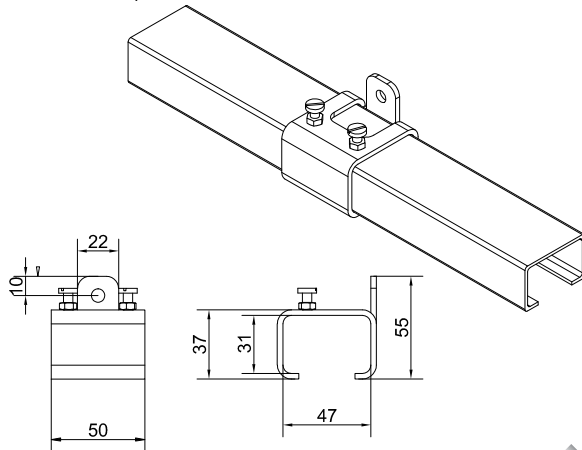
Materiaal: stalen buisprofiel, gegalvaniseerd volgens sendzimir procédé.

Lengtes: 2000, 2500 en 3000mm

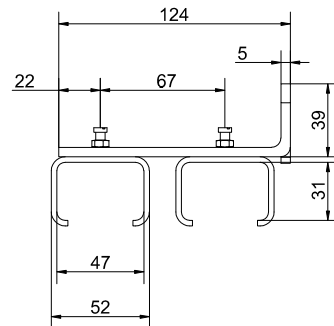
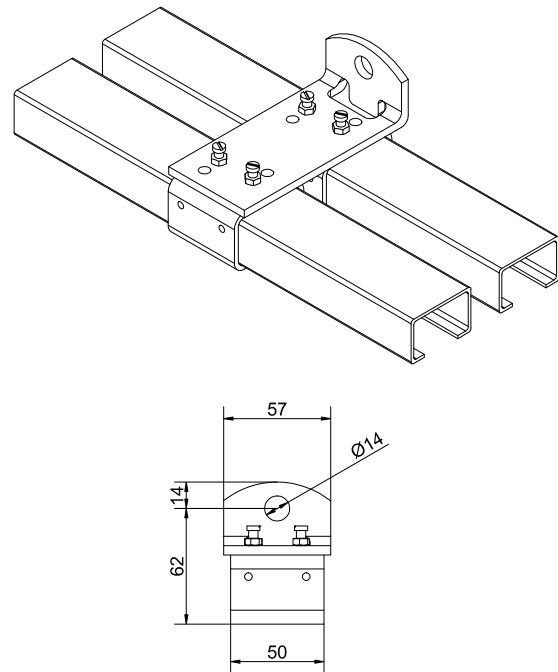
Bevestigingsgaten: geen

Raildragers - wandbevestiging:

RAILDRAGER 1/900

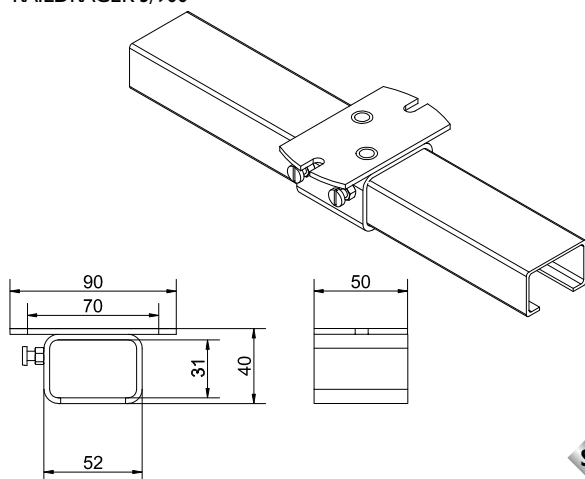


RAILDRAGER 5/900



Raildragers - plafondbevestiging:

RAILDRAGER 3/900



Legenda:



= Houten deur



= Staal



= Bronzen wielen



= Stalen deur



= Messing



= Nylon geleidewiel

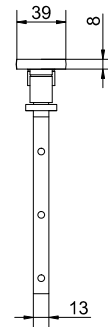
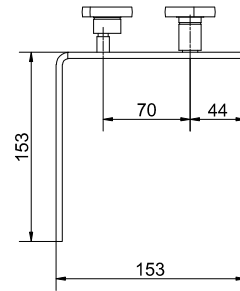
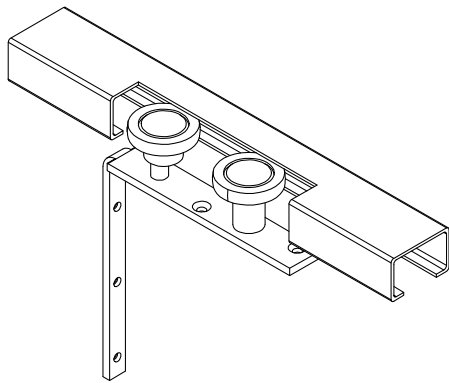
270

270 Majestic

onderlopend rechtschuivend beslag

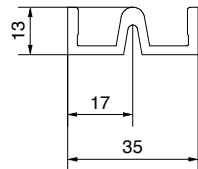
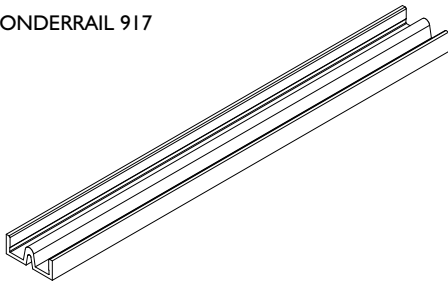
Bovengeleiders:

BOVENGELEIDER 203/900

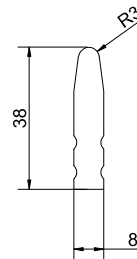
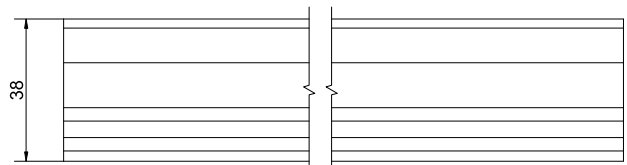


Onderrails:

ONDERRAIL 917

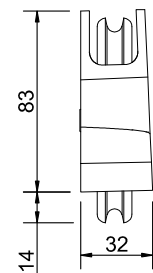
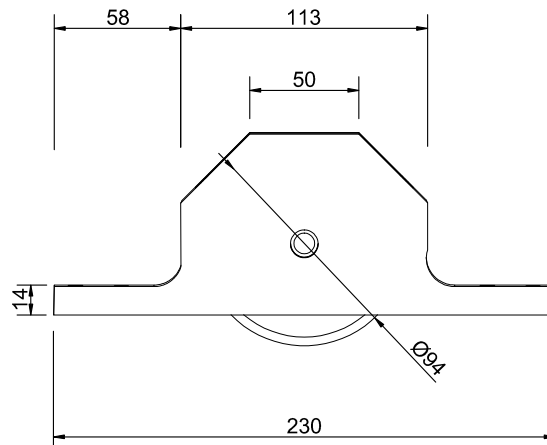
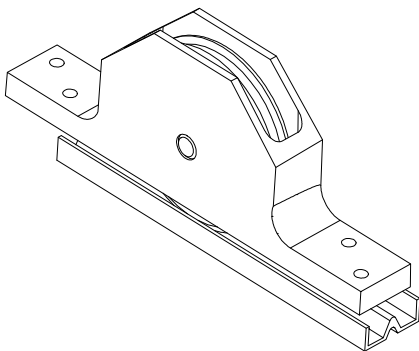


ONDERRAIL 817



Onderrollen:

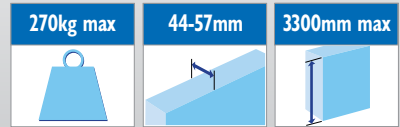
ONDERROL 916



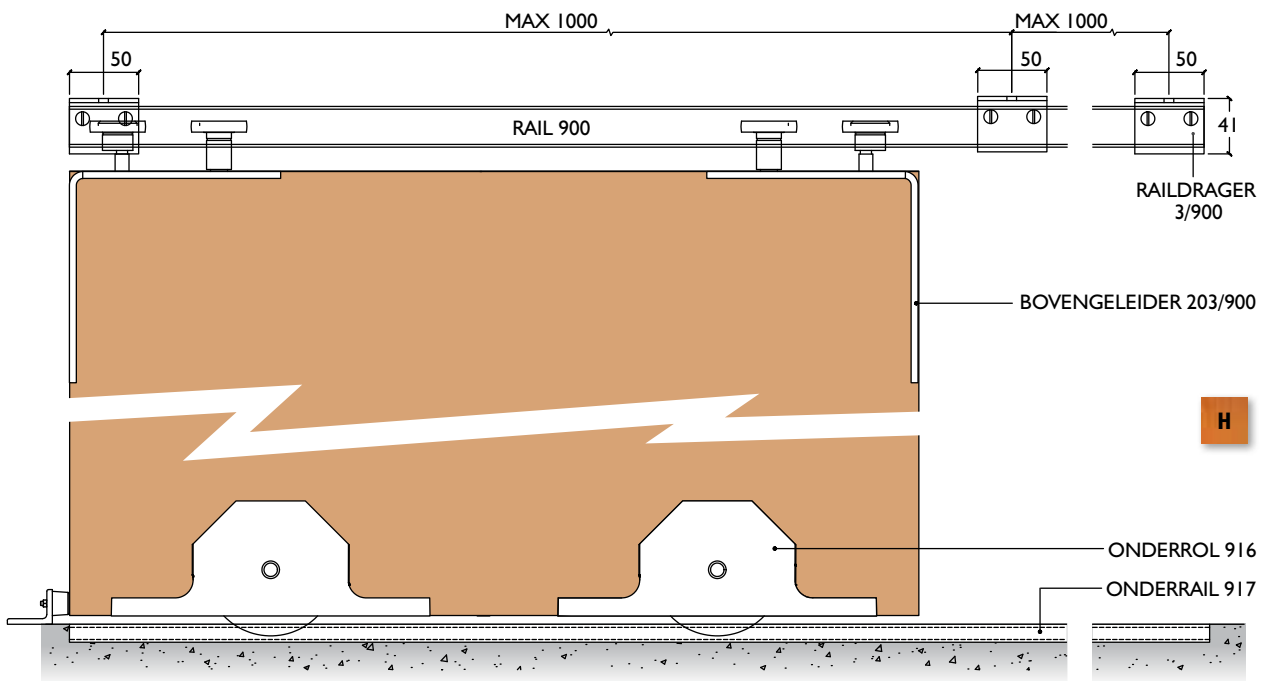
270

270 Majestic

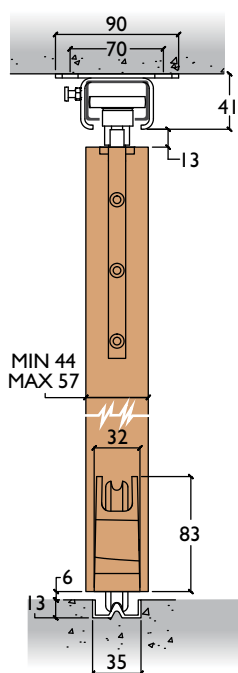
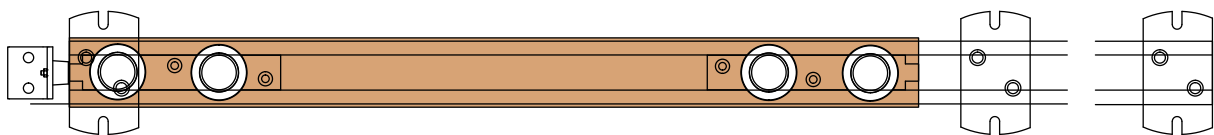
onderlopend rechtschuivend beslag



Stelsel opstelling: enkele rail



270



Opmerking:

Het gewicht van de deur(en) wordt door de vloer gedragen, zodat een lichte bovenconstructie mogelijk is.

Elk willekeurig aantal deuren kan worden toegepast op enkele of meervoudige railbanen.

De bovengeleiderail kan tegen de onderzijde van de bovendorpel van het kozijn worden gemonteerd, indien de deur in de dagopening schuift of tegen de zijwand als de deur geheel moet wegschuiven.

Hoge onderdorpels zijn noodzakelijk (minimaal 175mm) om de onderrollen te kunnen inbouwen.