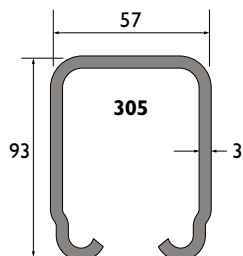


System 305

universele onderdelen

Rail:



Model: 305

Materiaal: koudgewalst staal, gegalvaniseerd volgens sendzimir procédé

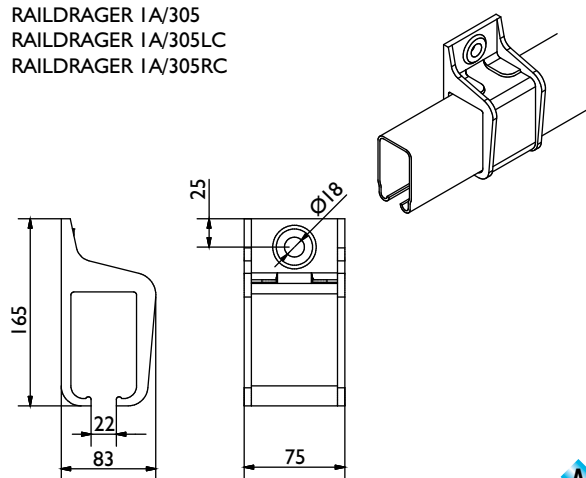
Lengtes: 2000, 3000, 4000, 5000 en 6000mm

Bevestigingsgaten: geen

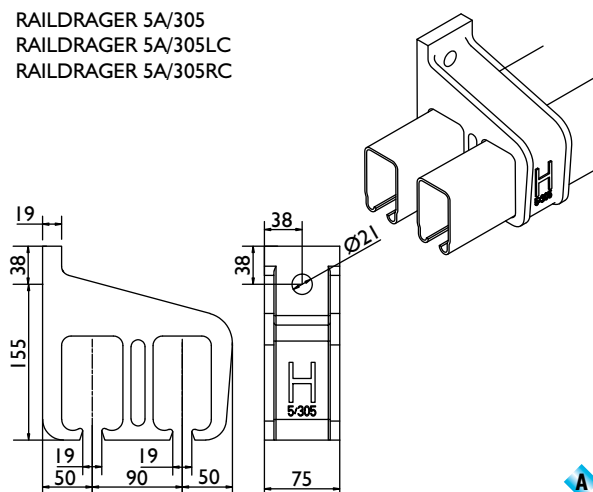
305

Raildragers - wandbevestiging:

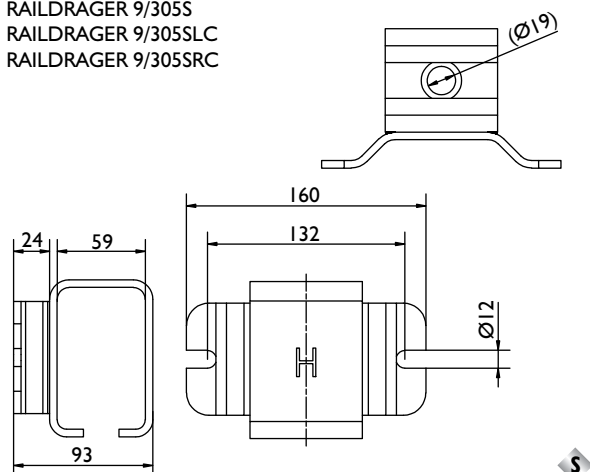
RAILDRAGER 1A/305
RAILDRAGER 1A/305LC
RAILDRAGER 1A/305RC



RAILDRAGER 5A/305
RAILDRAGER 5A/305LC
RAILDRAGER 5A/305RC



RAILDRAGER 9/305S
RAILDRAGER 9/305SLC
RAILDRAGER 9/305SRC



Legenda:

- | | |
|----------------------------------|--------------------------|
| H = Houten deur | S = Staal |
| S = Stalen deur | A = Aluminium |
| M = Messing geleidewielen | S = Stalen wielen |
| | N = Nylon wielen |

Opmerking:

Verbindings-raildragers worden aanbevolen op elke railverbinding. Bij het specificeren de letter "X" toevoegen.

Toevoeging **C** = gesloten raildrager
Toevoeging **LC** = links gesloten raildrager
Toevoeging **RC** = rechts gesloten raildrager

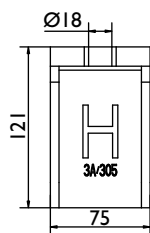
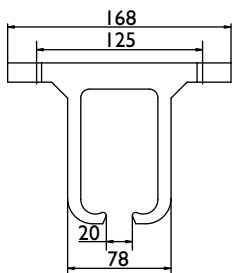
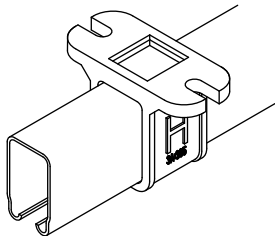
Gesloten raildragers dienen aan beide einden van de totale railbaan te worden gemonteerd en dienen uitsluitend voor het afsluiten van de rail, niet als deurbuffer gebruiken.

System 305

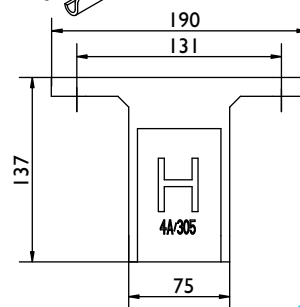
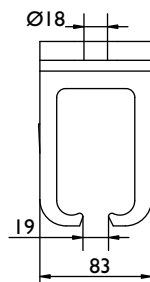
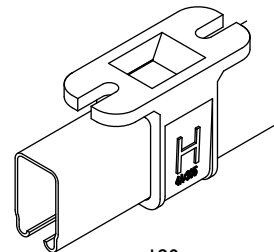
universele onderdelen

Raildragers - plafondbevestiging:

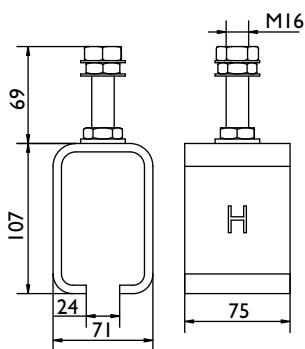
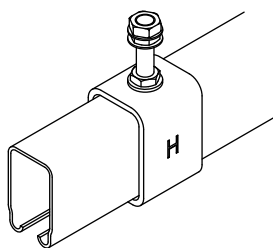
RAILDRAGER 3A/305
RAILDRAGER 3A/305C



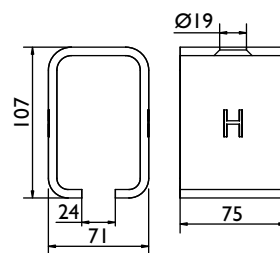
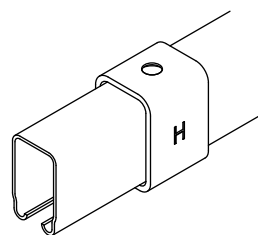
RAILDRAGER 4A/305
RAILDRAGER 4A/305C



RAILDRAGER 4R/305
RAILDRAGER 4R/305SC

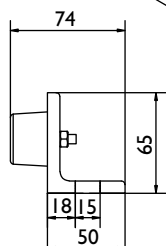
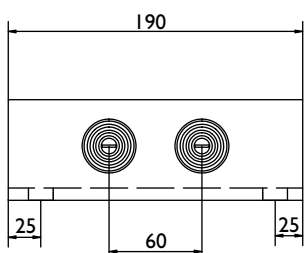
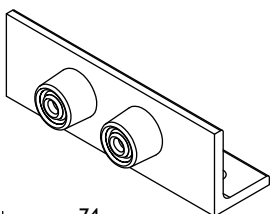


LASDRAGER 4R/305SB

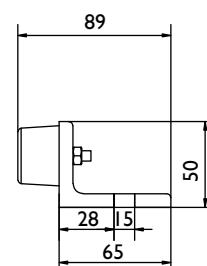
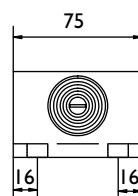
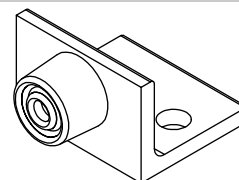


Specials:

STOP 107

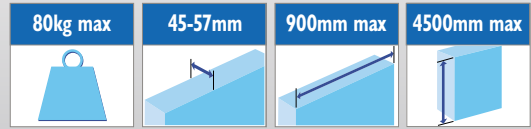


STOP 109

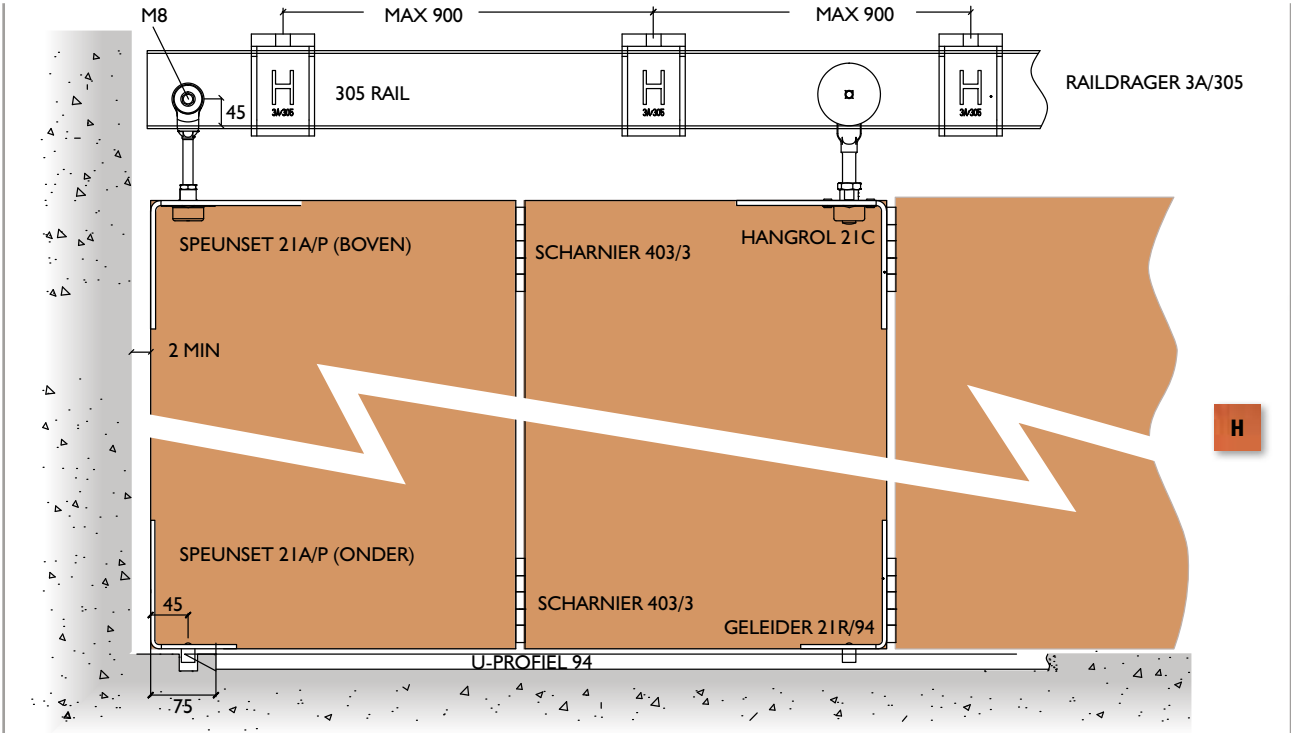


System 305

council vouwdeurbeslag

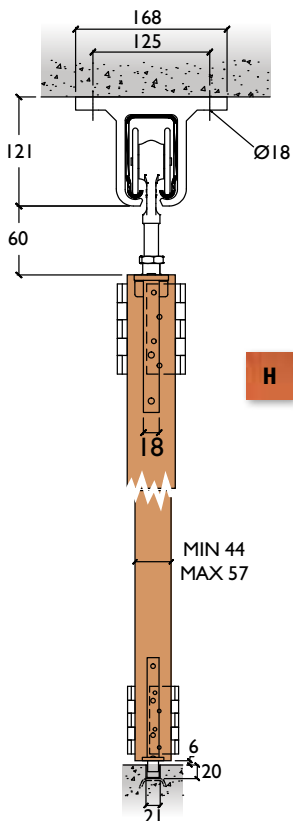
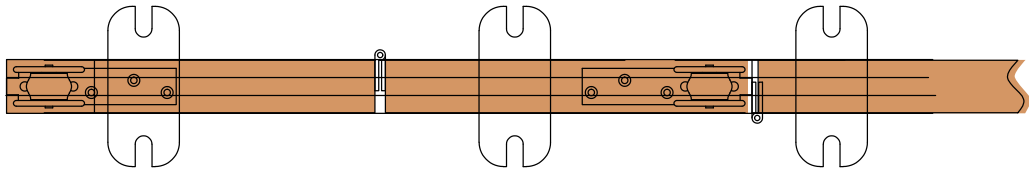


System opstelling:

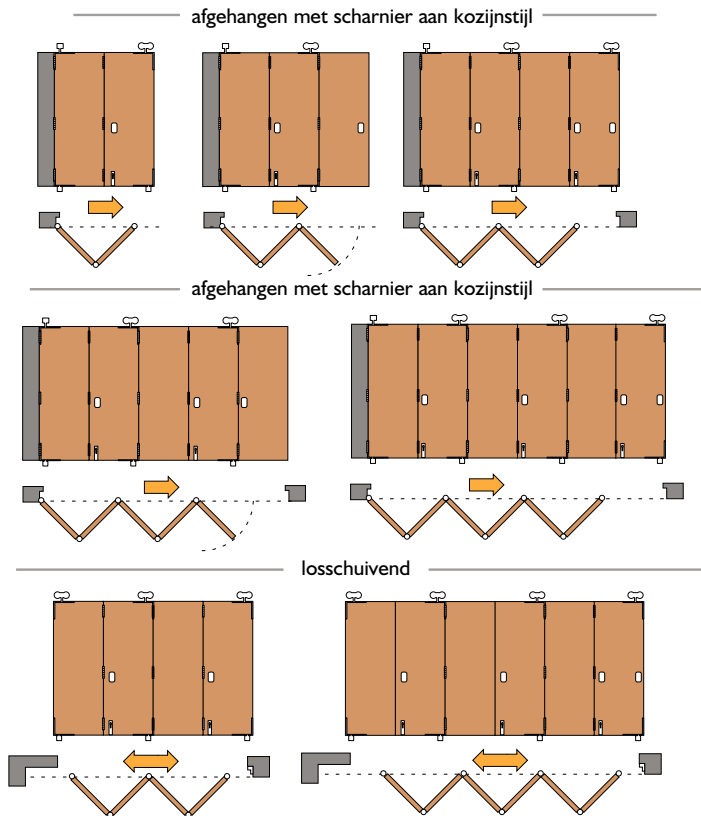


305

H

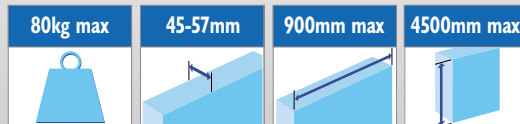


H



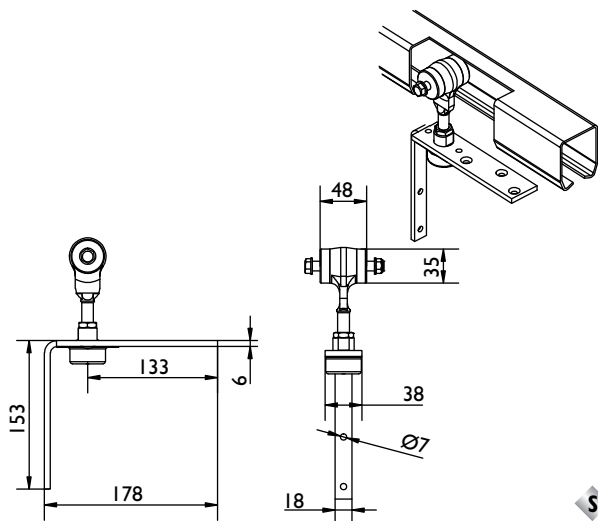
System 305

council vouwdeurbeslag

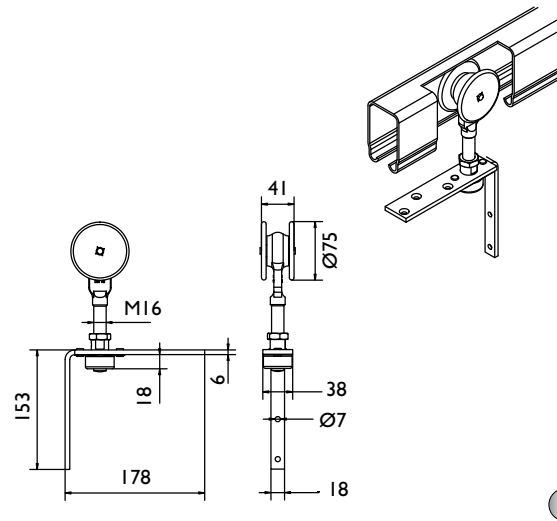


Hangrollen, geleiders en scharnieren:

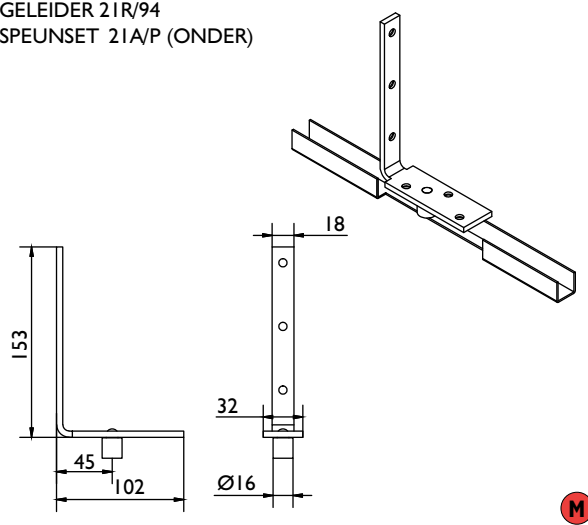
SPEUNSET 21A/P (BOVEN)



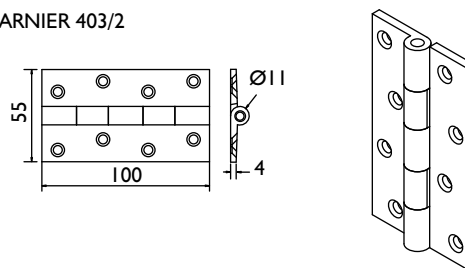
HANGROL 21C/S



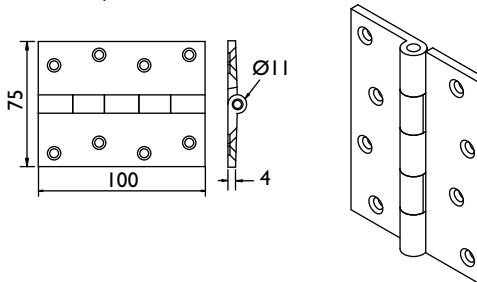
GELEIDER 21R/94
SPEUNSET 21A/P (ONDER)



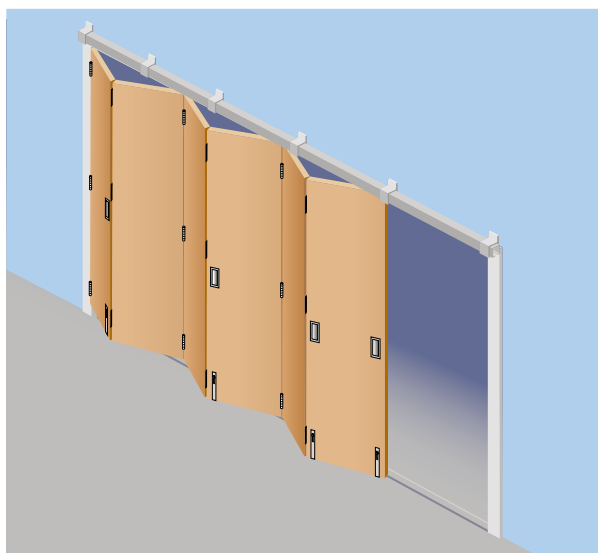
SCHARNIER 403/2



SCHARNIER 403/3



AG



Opmerking:

Op de plaats waar het samengevouwen deurpakket hangt, moet een extra raildrager gemonteerd zijn.

Voor een soepele werking maximaal acht deurvleugels afhangen, alternatief kunnen losschuivende garnituren worden toegepast (minimaal 4 deurvleugels).

Desgewenst kan van één van de deurvleugels, oneven aantal, een loopdeur worden gemaakt (tot 3000mm deurhoogte).

Bij gebruik van speunset 21A/P zijn alle deurvleugels gelijk; afgehangen aan het kozijn dan is de eerste deurvleugel smaller, namelijk deurbreedte - (45 + 1/2 deurdikte).

H.o.h. afstanden scharnierpunten dienen gelijk te zijn!