

FITTING INSTRUCTIONS – NOTICE DE POSE – MONTAGE HANDLEIDING – MONTAGEANLEITUNG

ISTRUZIONI DI MONTAGGIO – INSTRUCCIONES DE MONTAJE

System Specification

Maximum Door Width = 1200mm

Minimum Door Width = 500mm

Husky system door thickness = 32 - 47mm

Soltaire system door thickness = 35 – 47mm

Husky Panel Weight = 80kg

Soltaire Panel Weight = 120kg

Contents of Kit



Short Arm

2 Door x 1
3 Door x 2



Belt Joint bracket

x 1
x 2



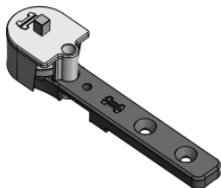
Belt retain block

x 1
x 1



Belt clamp

x 3
x 6



Long Arm

2 Door x 1
3 Door x 2



Fixed Floor guide

x 1
x 1



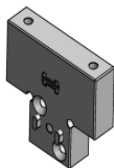
Adjustable floor guide bracket

x 1
x 2



Adjustable floor guide foot

x 1
x 2



Datum Block

2 Door x 1
3 Door x 1



Spanner

x 1
x 1



**Toothed belt
(Metres)**

x 3 m
x 5 m



Second door bracket

x 0
x 1

Screw pack contents

	2 Door Kit	3 Door Kit
M6 x 12 CSK HD	3	7
4.5 x 30 Wood screw	11	18
M4 x 6 Grubscrew	1	2
M6 x 10 Hex HD Bolt	3	6

PLEASE NOTE

These instructions are to be read in conjunction with instructions specific to your chosen system.

Tools required



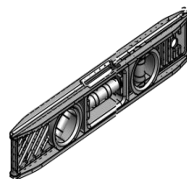
Tape Measure



2, 3, 4 & 5 mm Allen keys



Posi drive screwdriver



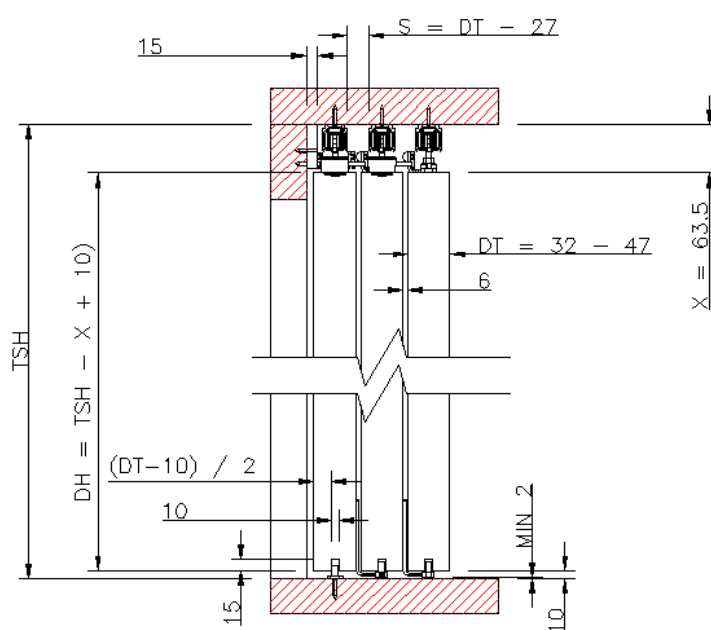
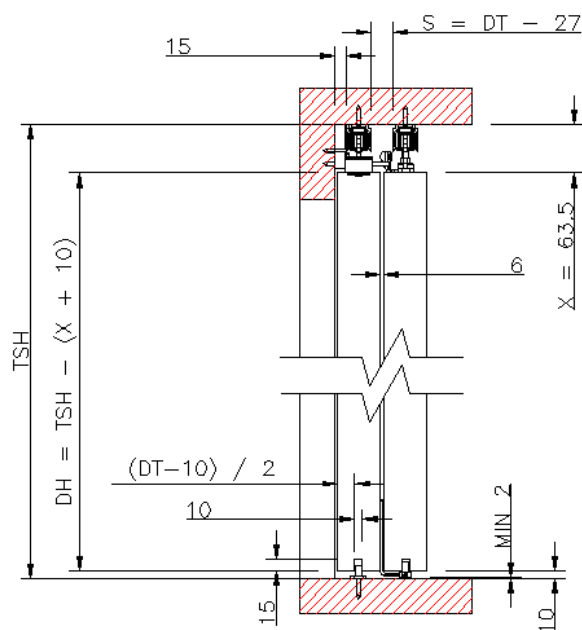
Spirit level

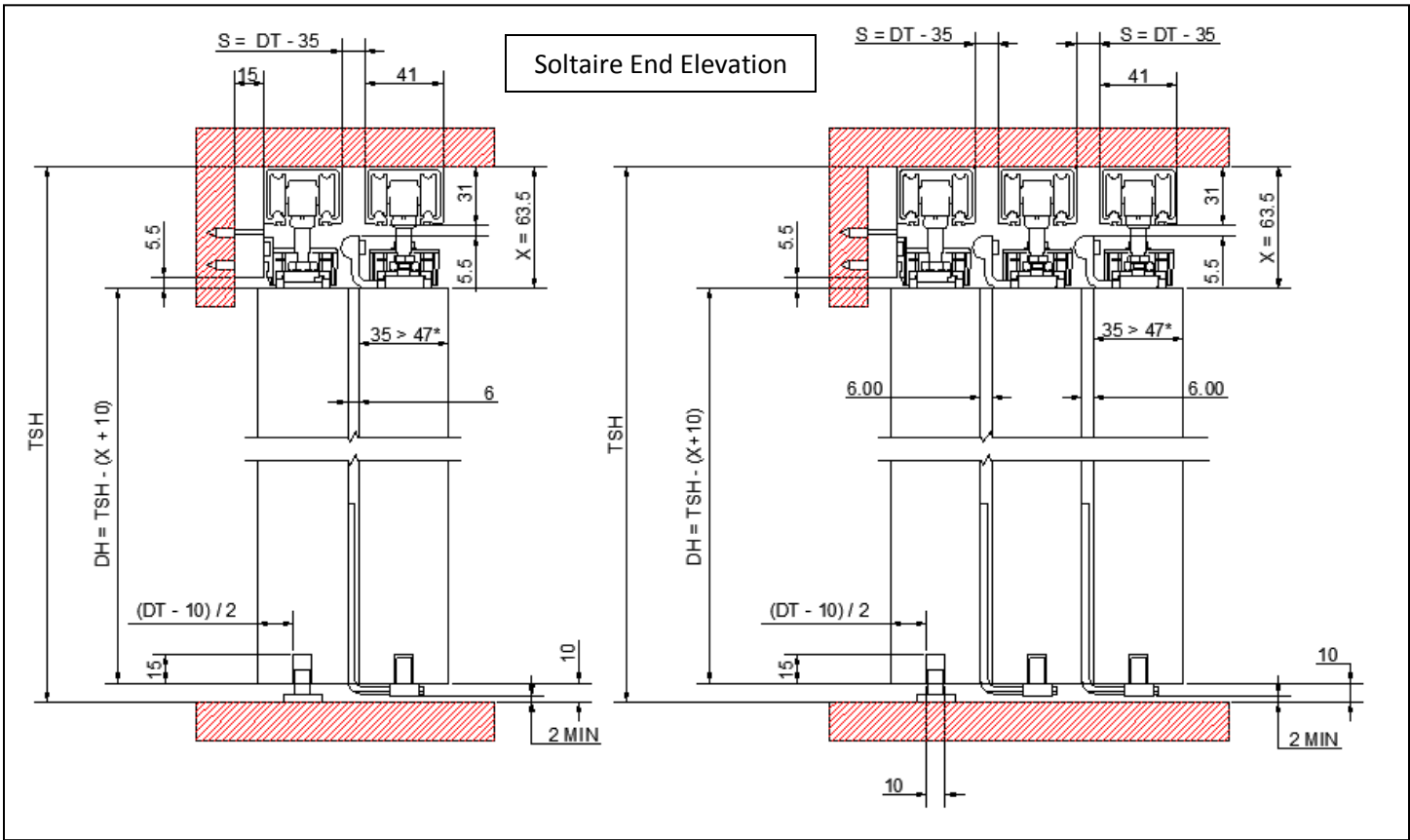


Scissors

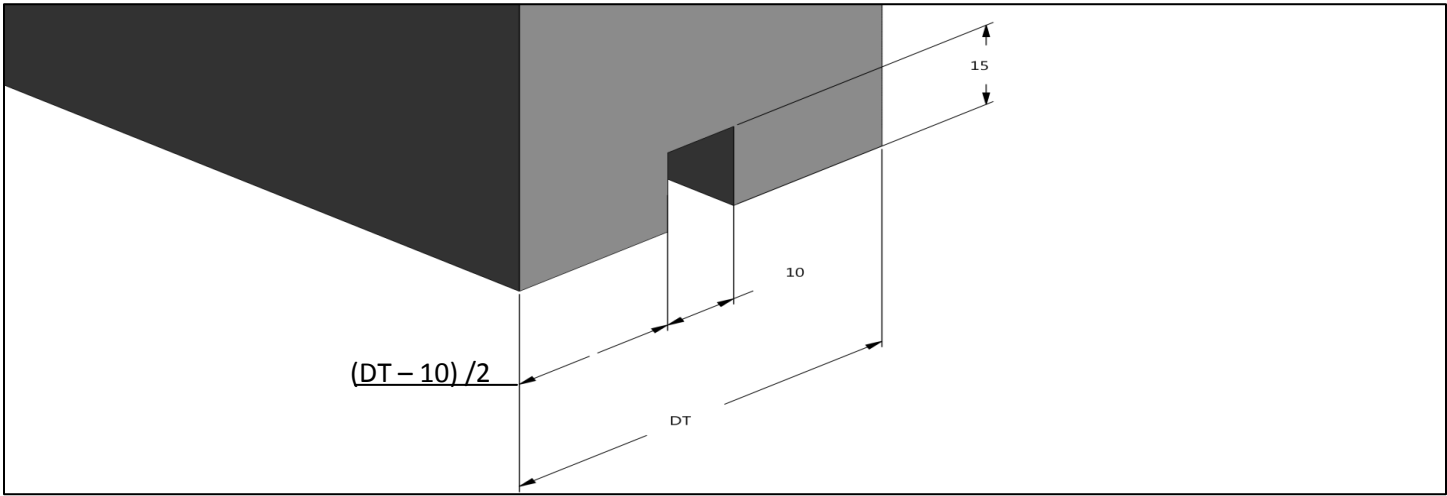
System Overview & Track Installation

Husky End Elevation



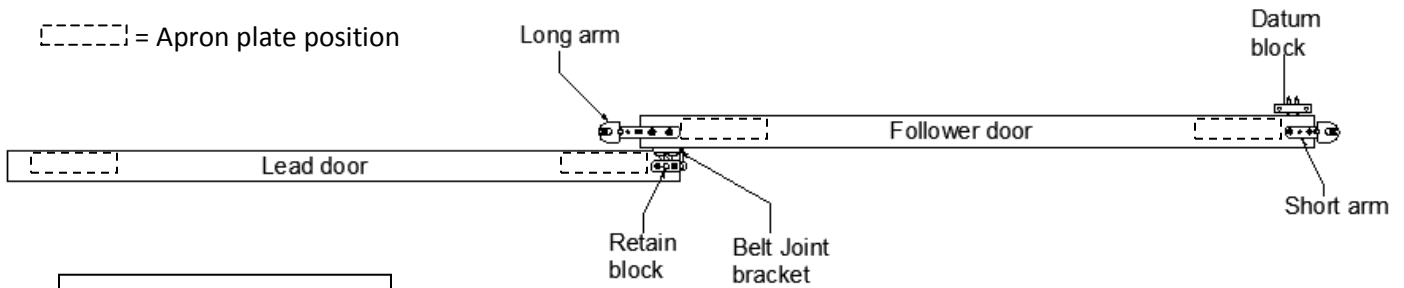


Door Floor guide routing detail



Two Door System Overview

[---] = Apron plate position

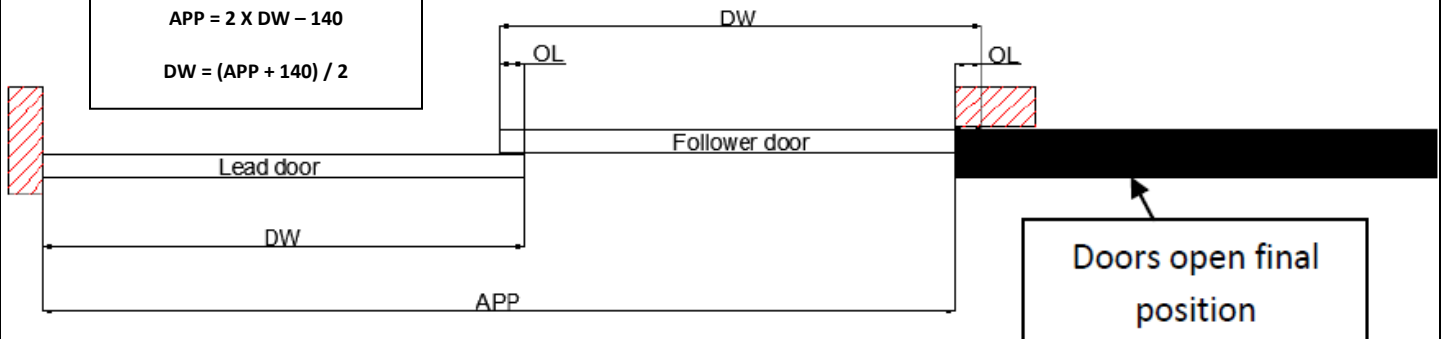


$$APP = (2 \times DW) - (2 \times OL)$$

PCH RECOMMEND OL = 70mm

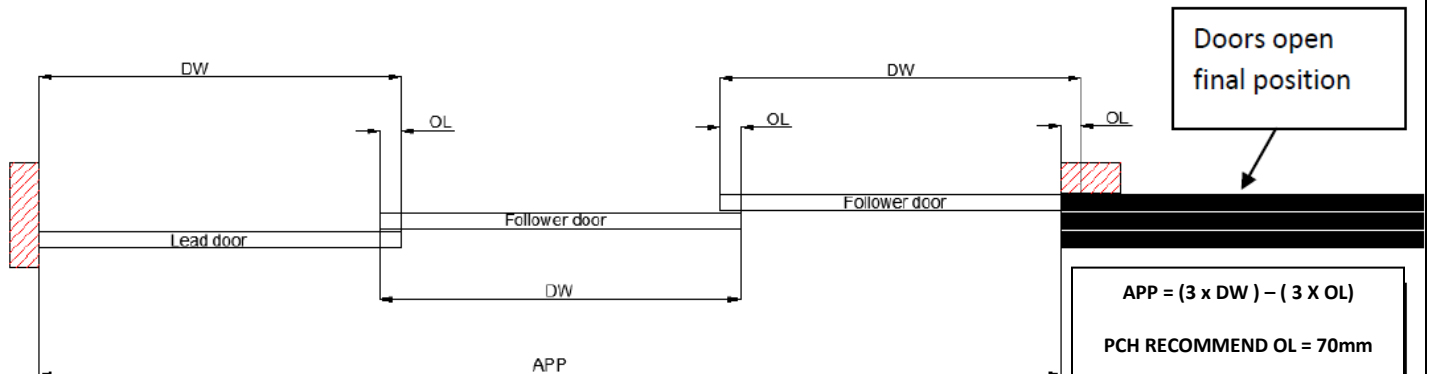
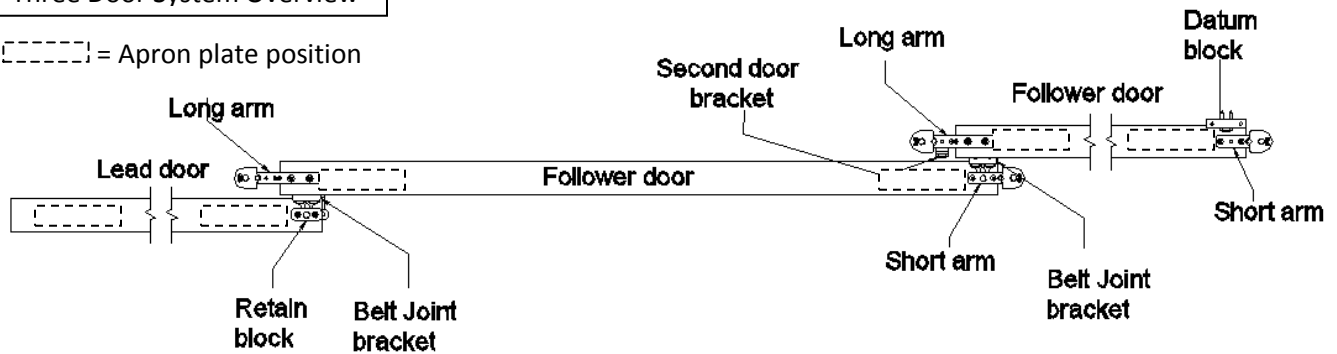
$$APP = 2 \times DW - 140$$

$$DW = (APP + 140) / 2$$



Three Door System Overview

[---] = Apron plate position



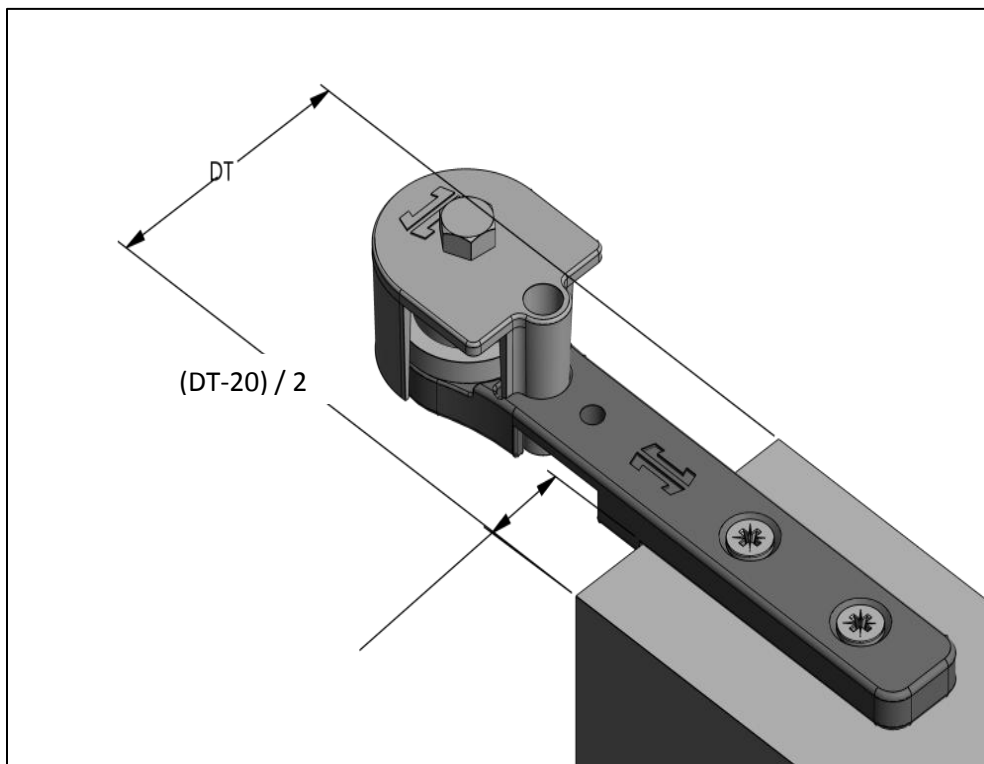
$$APP = (3 \times DW) - (3 \times OL)$$

PCH RECOMMEND OL = 70mm

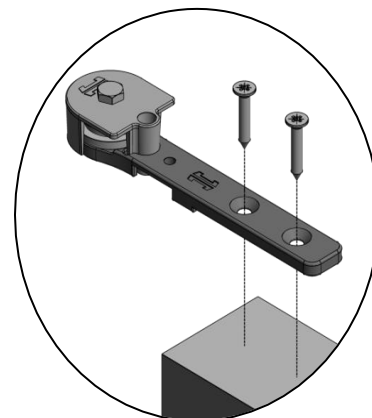
$$APP = 3 \times DW - 210$$

$$DW = (APP + 210) / 3$$

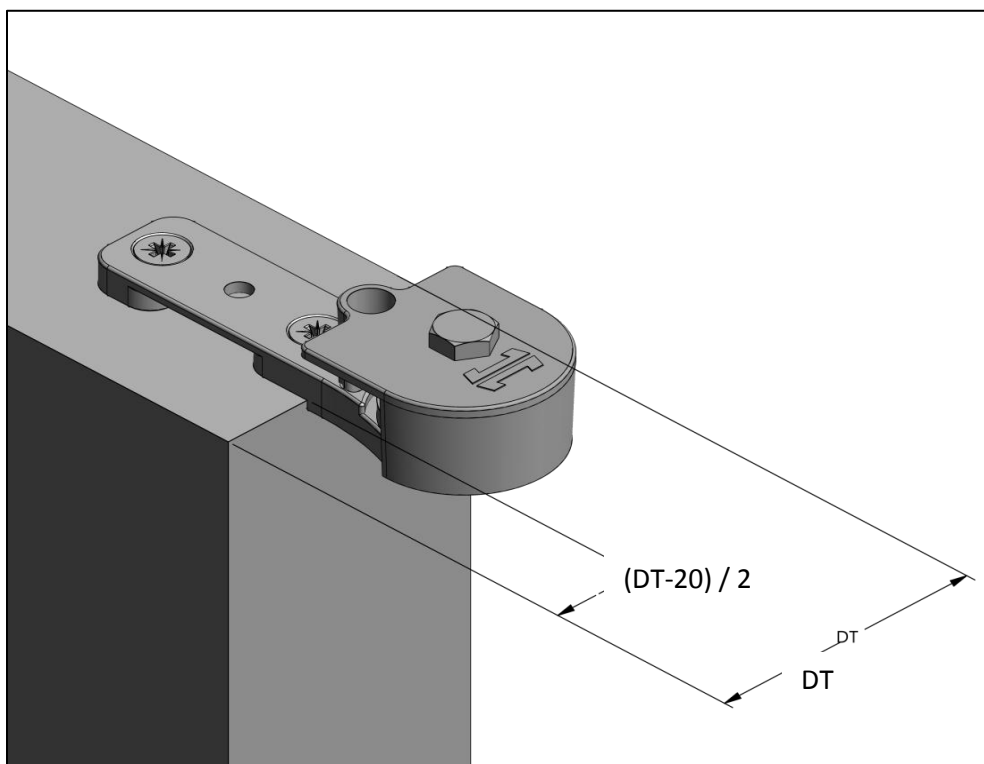
1. Attach long arm on follower door



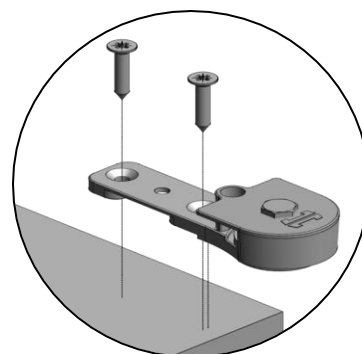
4.5 x 30 Wood Screws



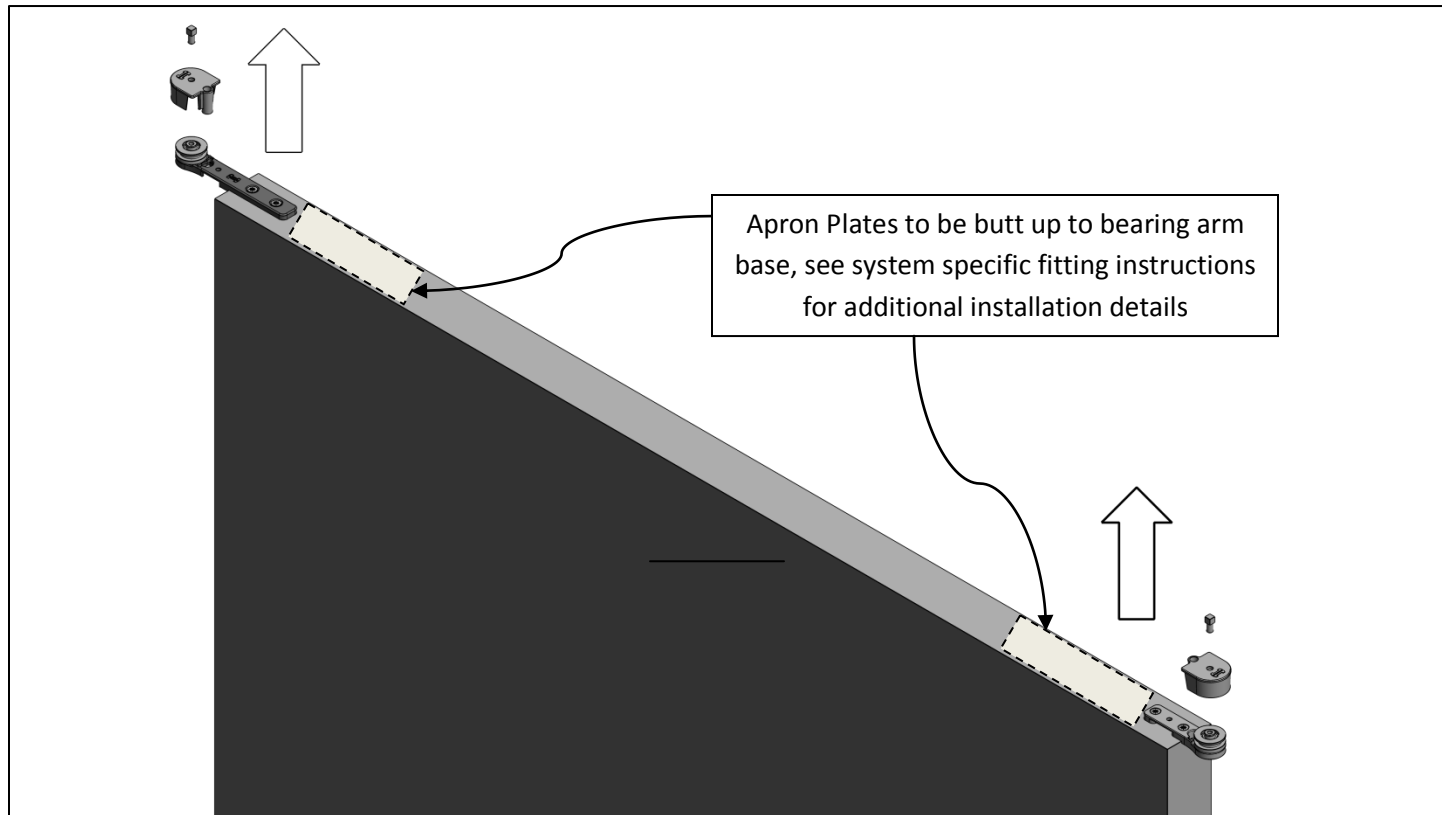
2. Attach short arm on follower doors



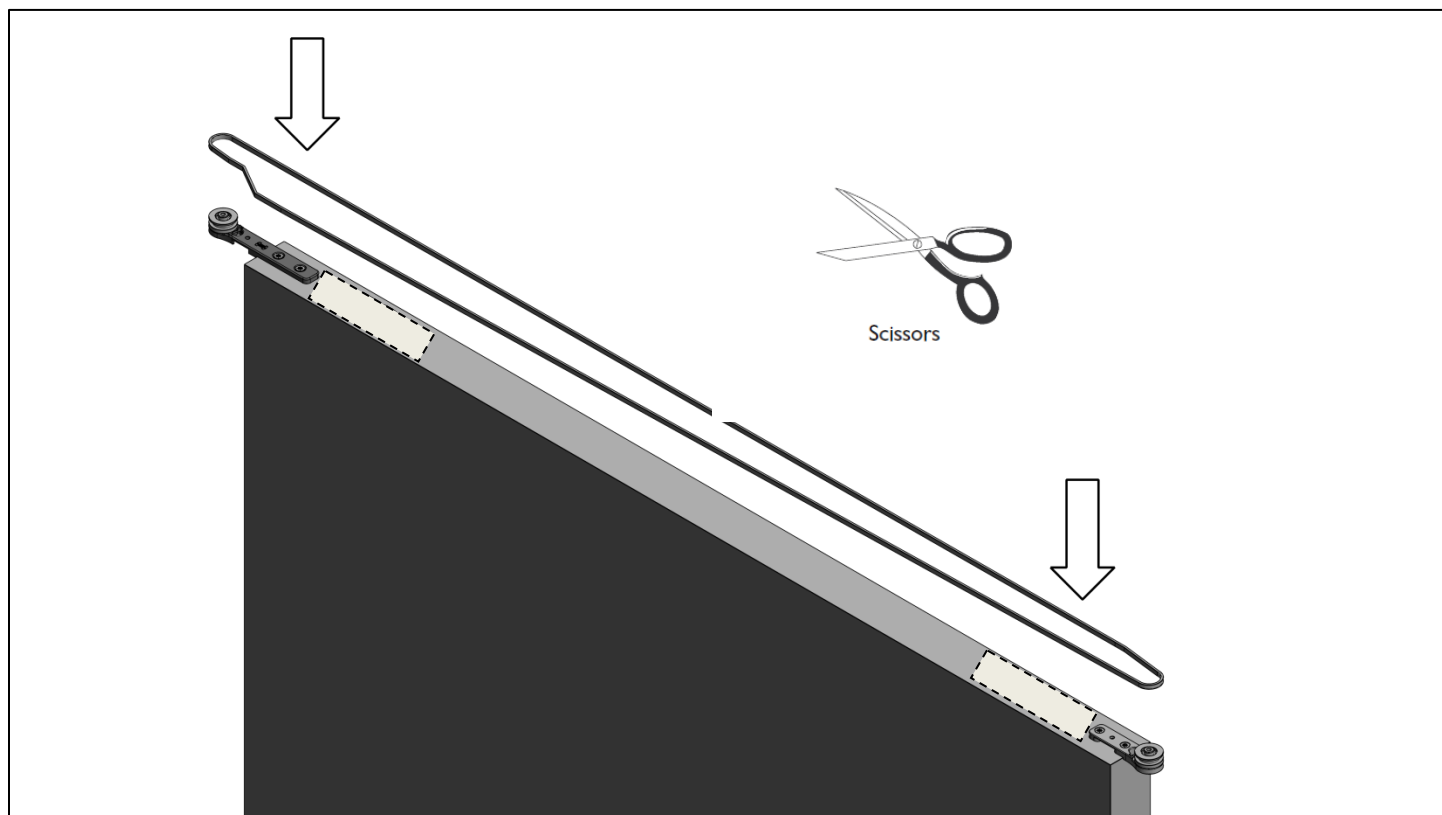
4.5 x 30 Wood Screws



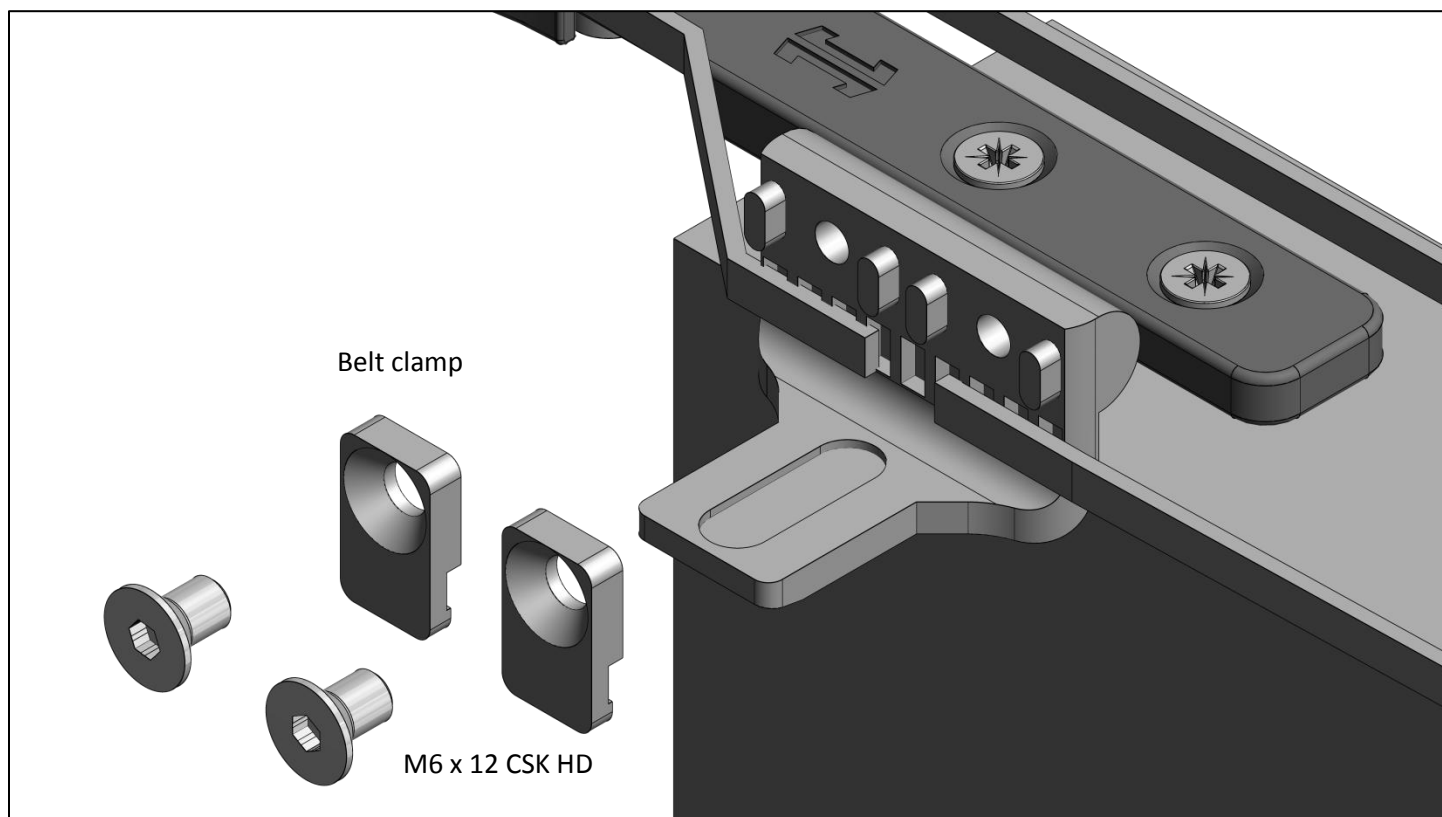
3. Remove bearing caps



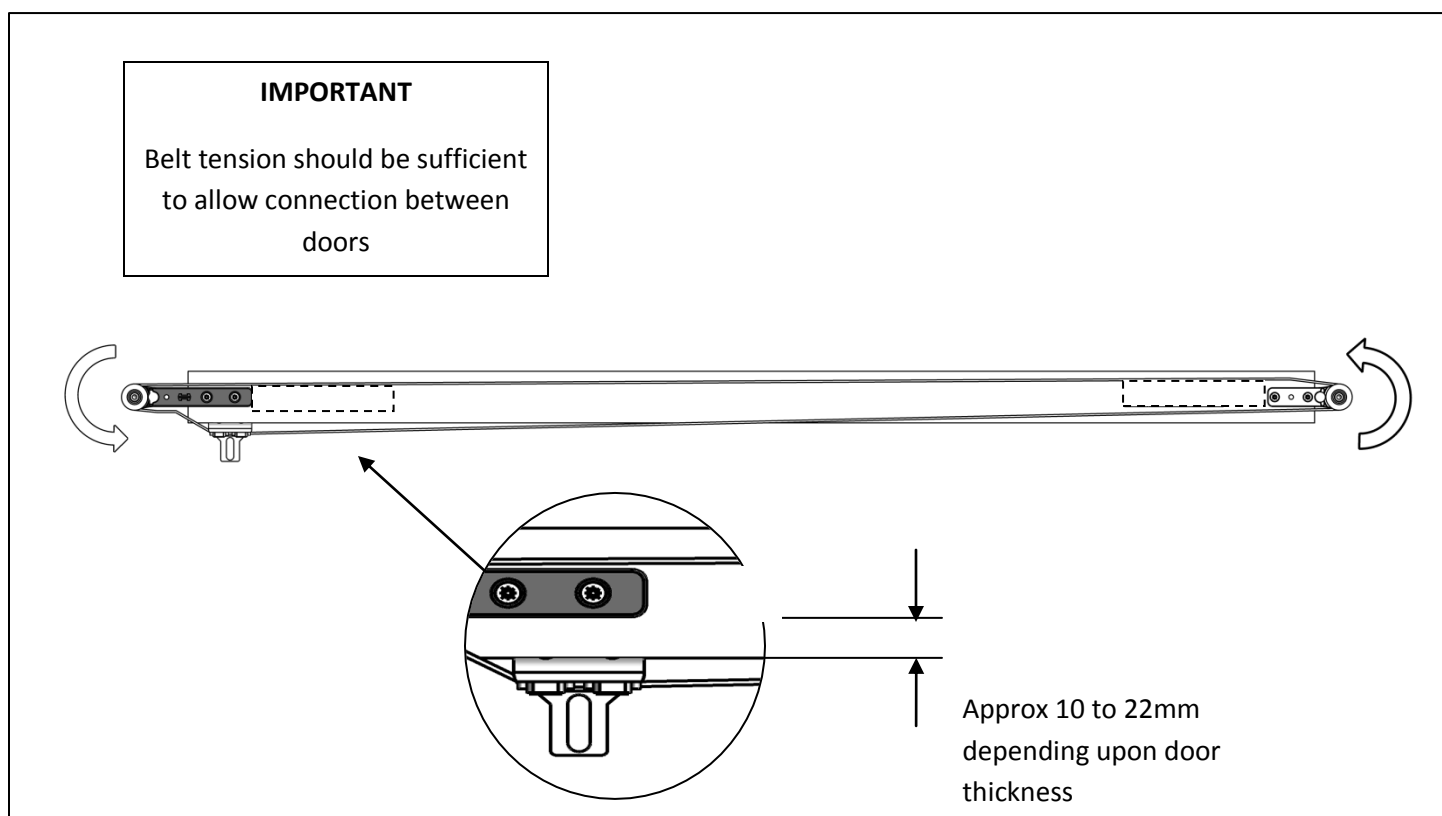
4. Loop belt around bearing wheels & cut belt to length



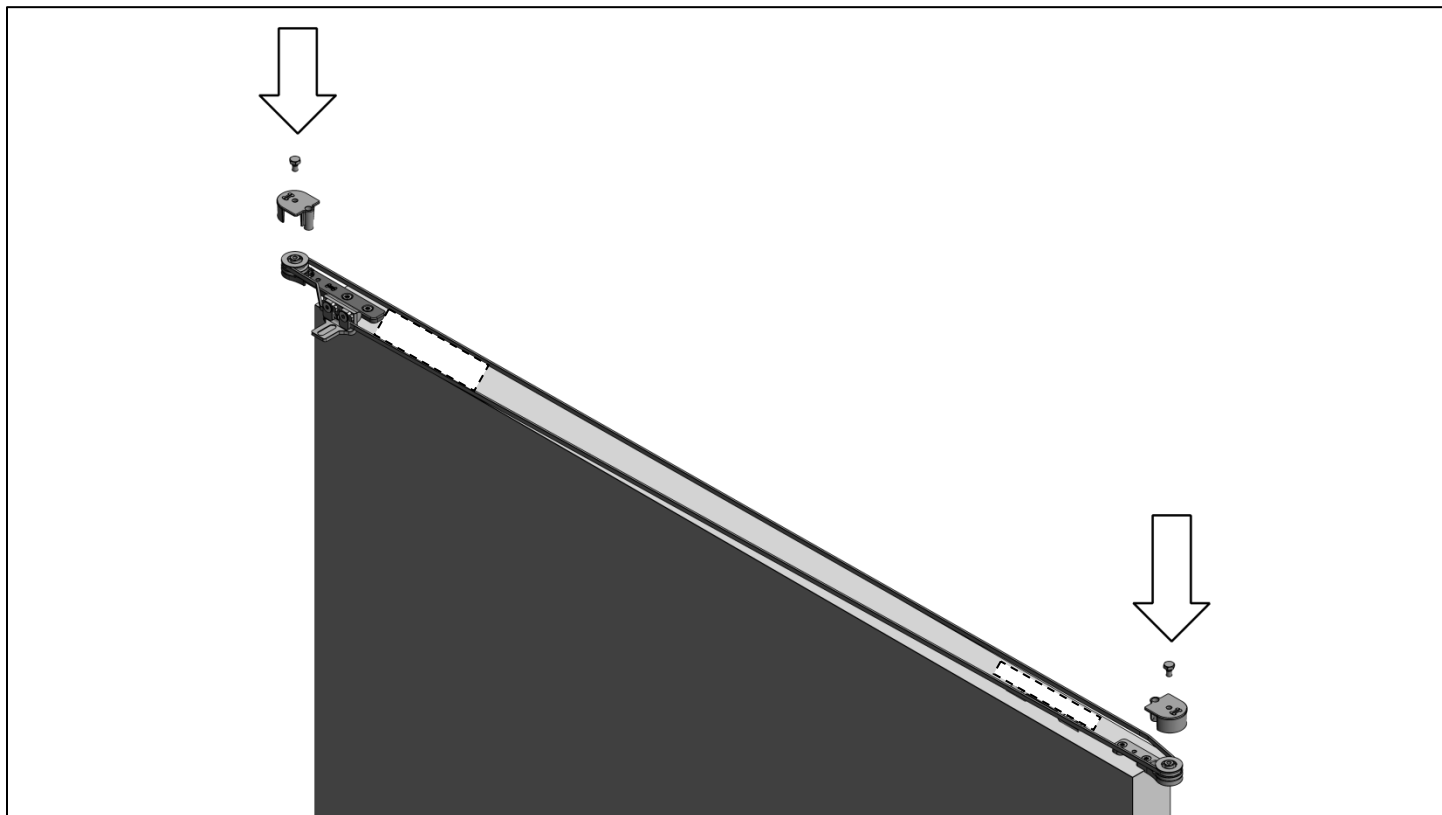
5. Attach both ends to belt joint bracket



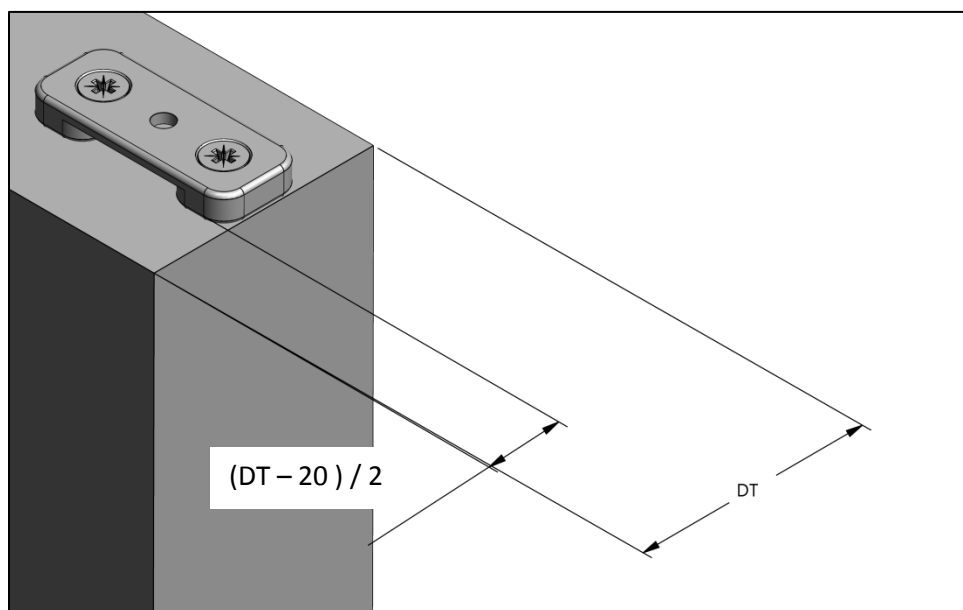
6. Clamp bracket should be free to traverse between bearings



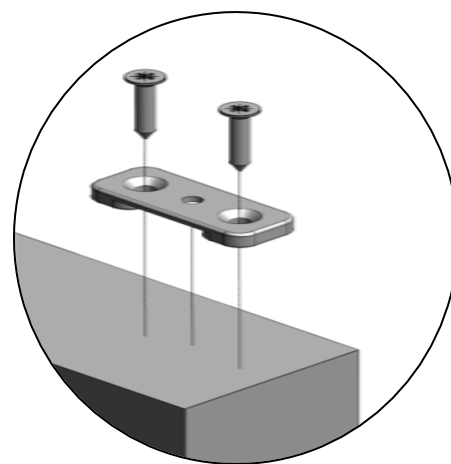
7. Re attach bearing caps



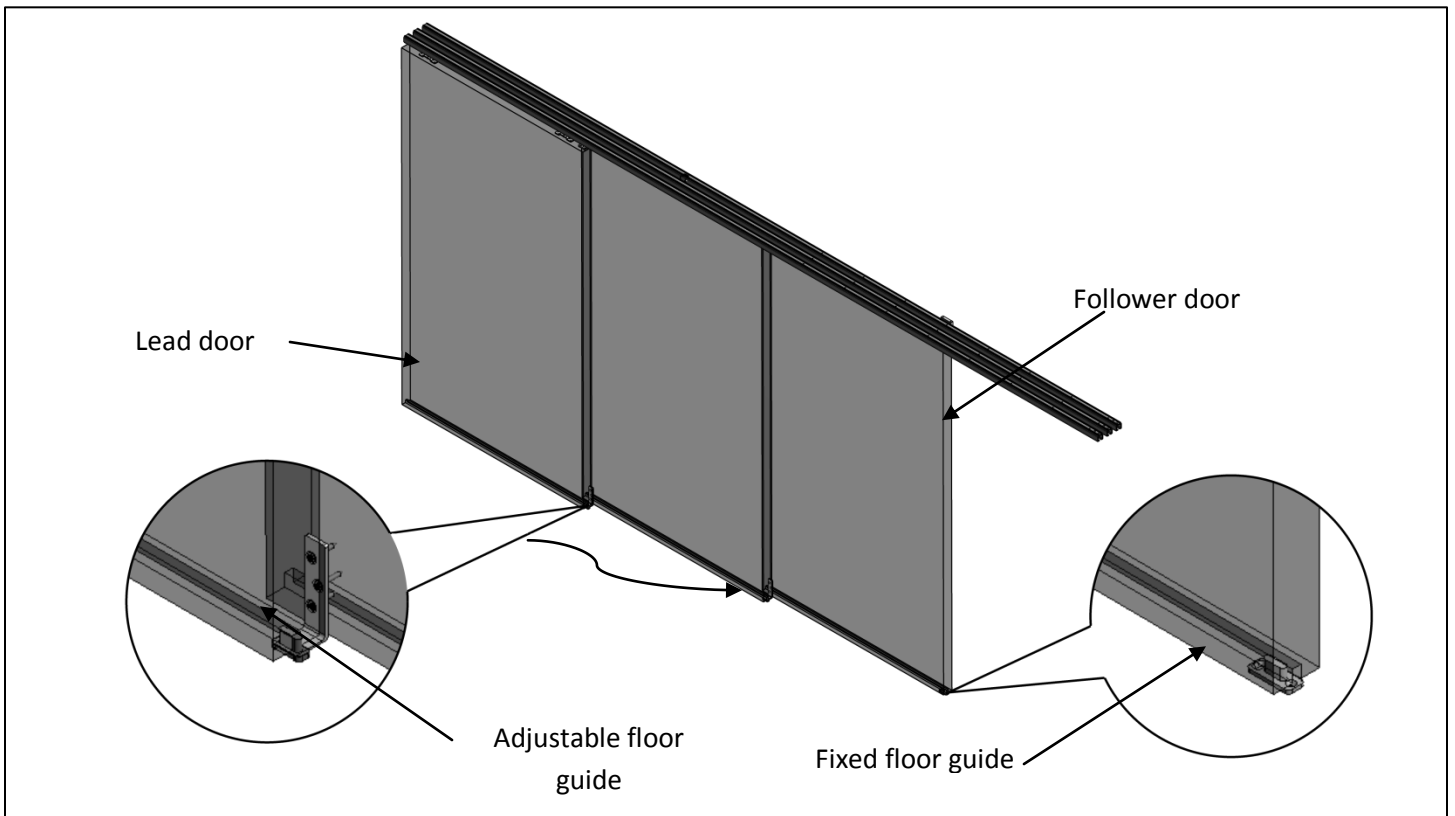
8. Position retain block on Lead door



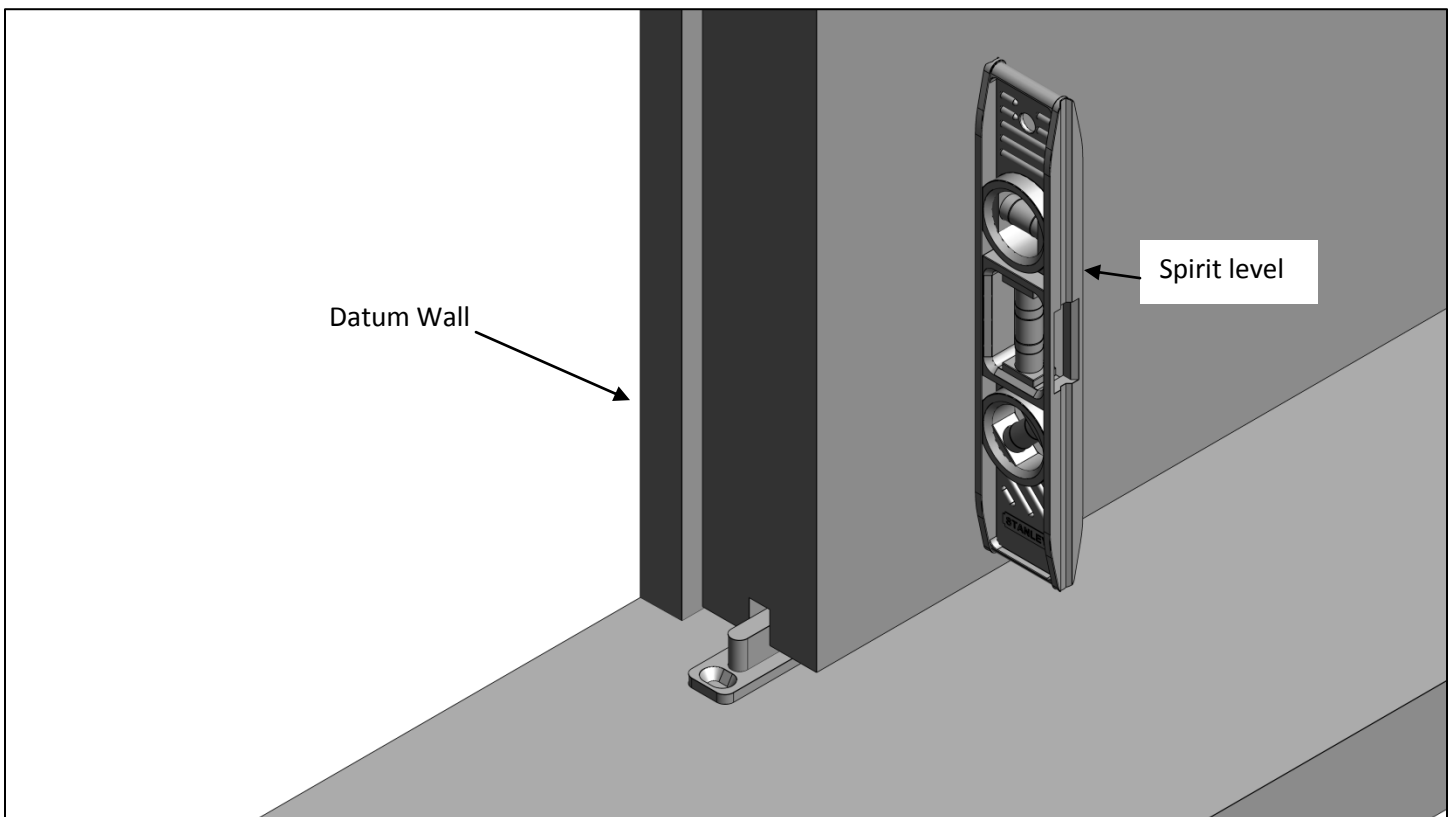
4.5 x 30 Wood Screws



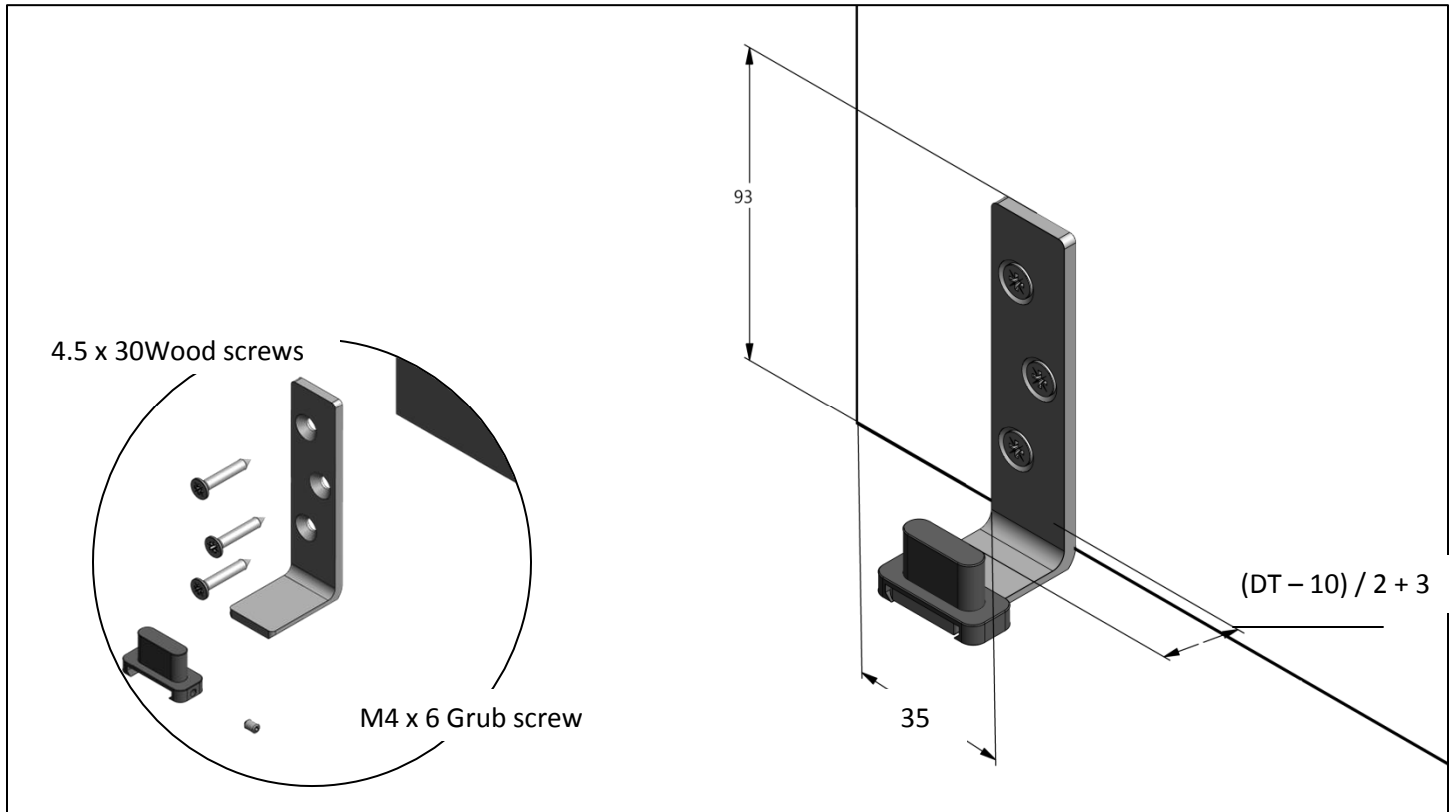
9. Floor guide overview



10. Align doors with spirit level to position fixed floor guide

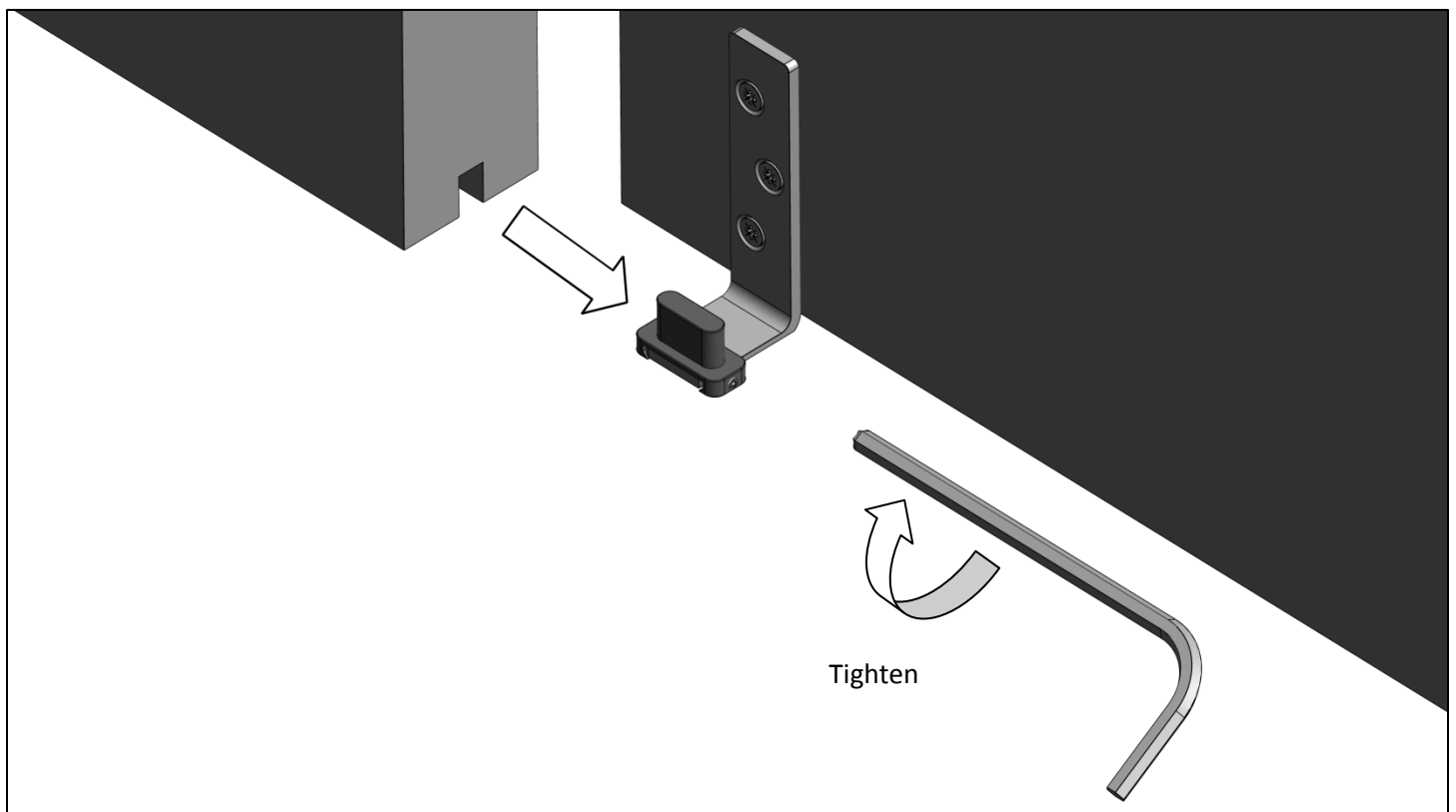


11. Position floor guide on follower door

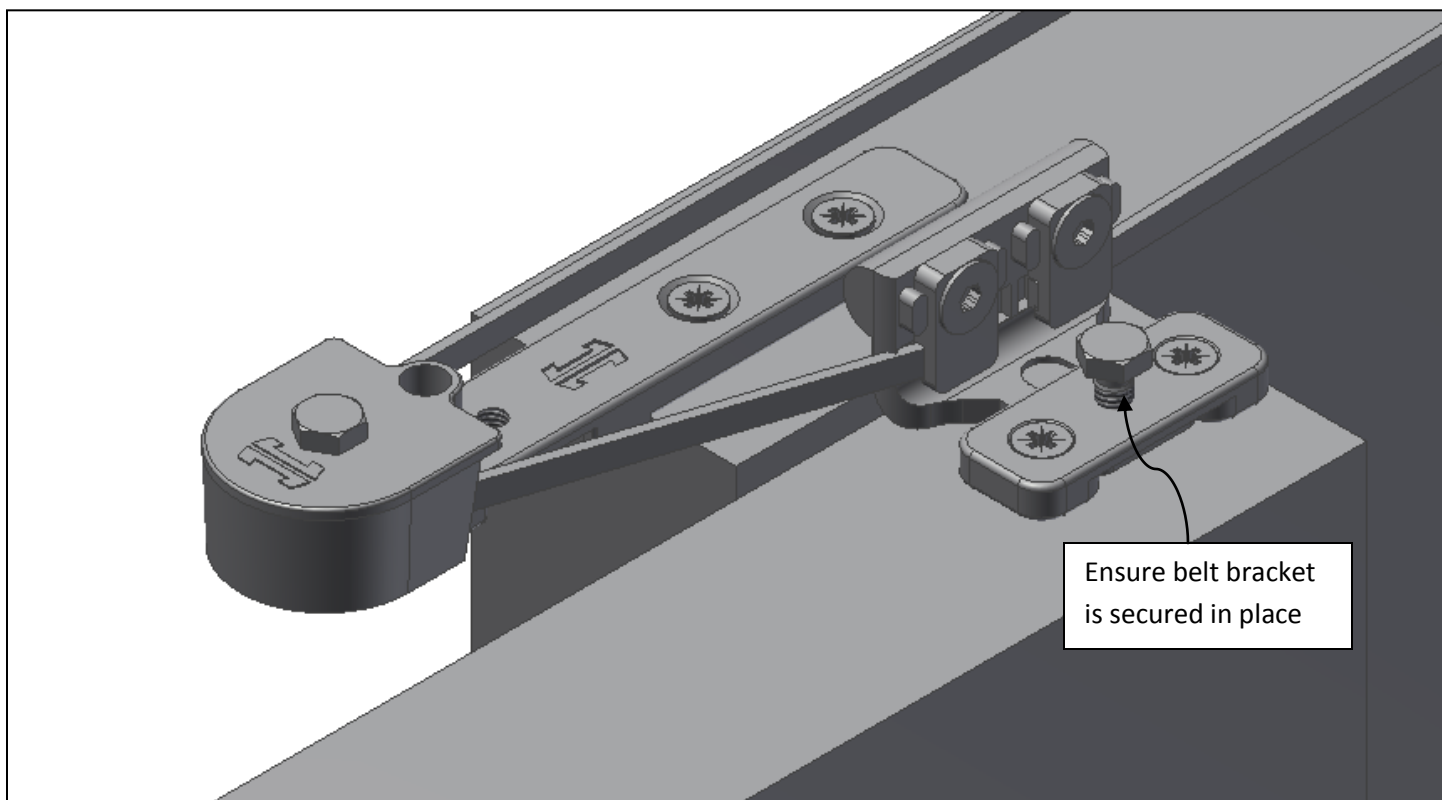


12. Hang Doors, Follow fitting instructions specific to your hanger

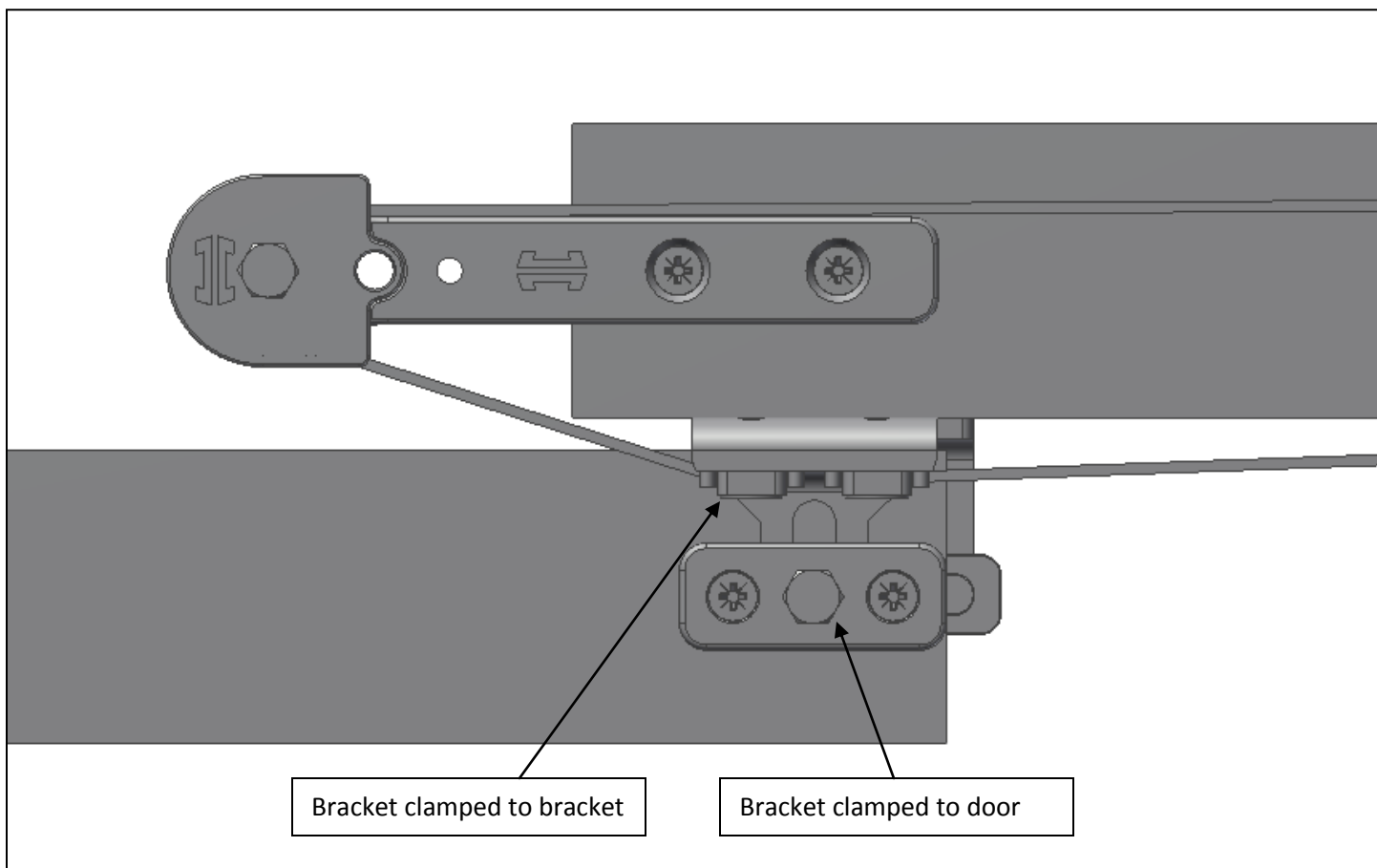
13. Ensure floor guide correctly aligned



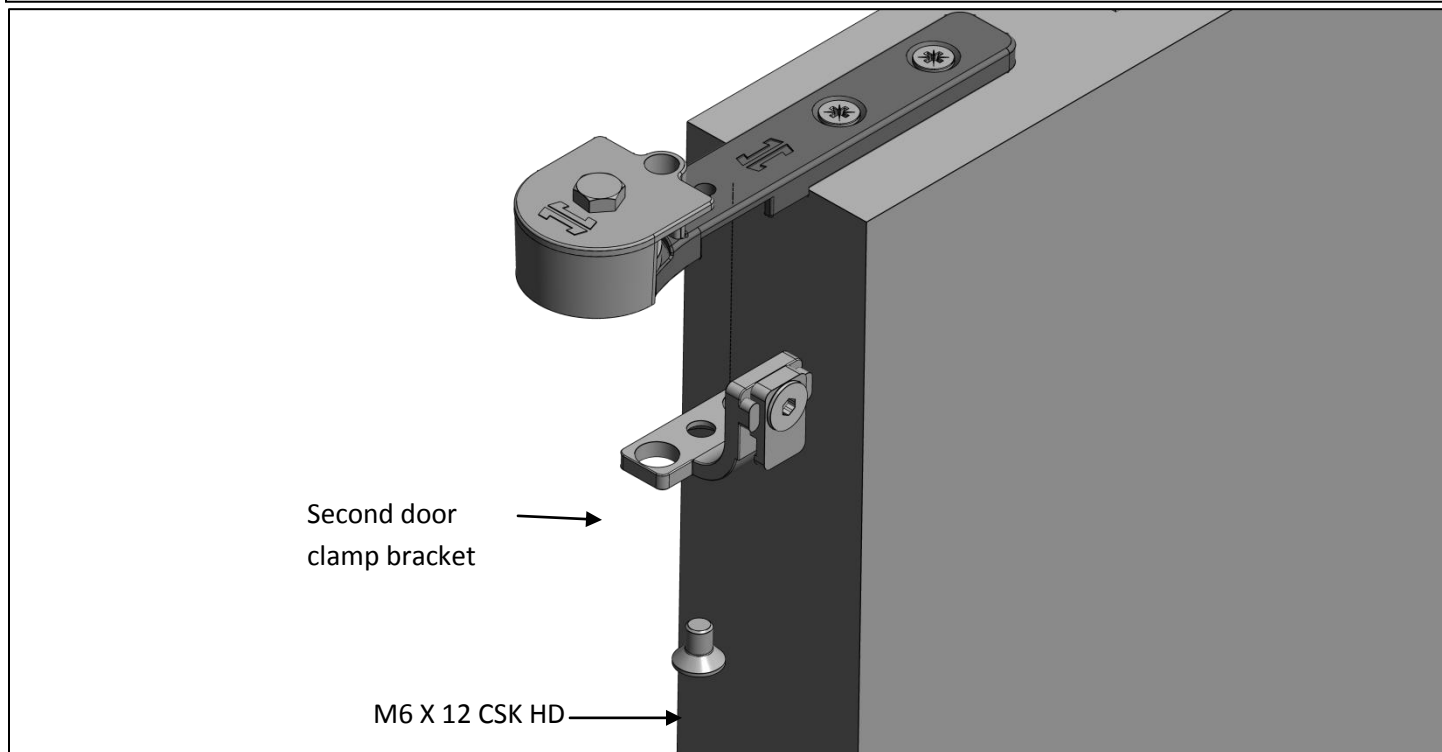
14. Connect doors



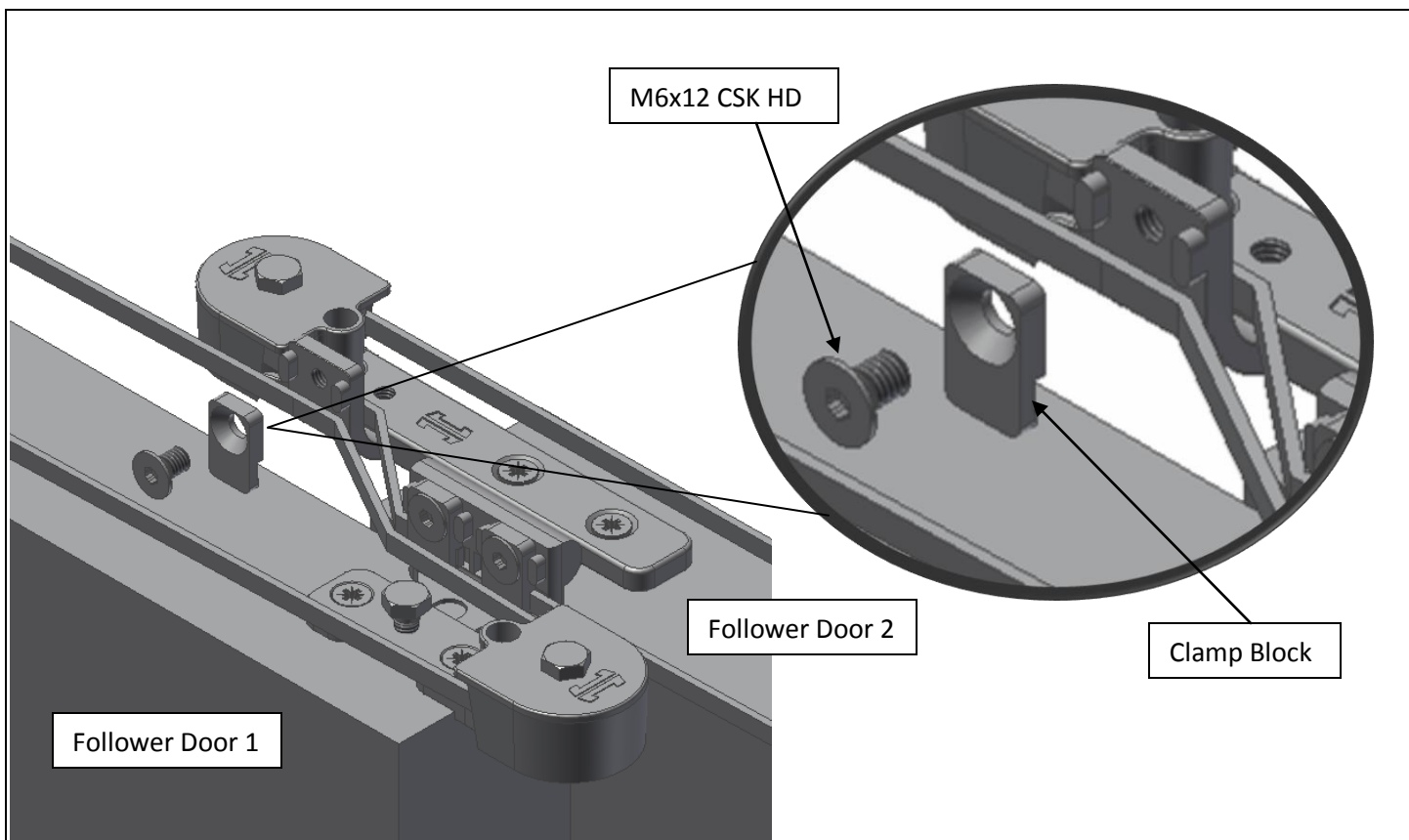
15. Two & Three Door belt Overview



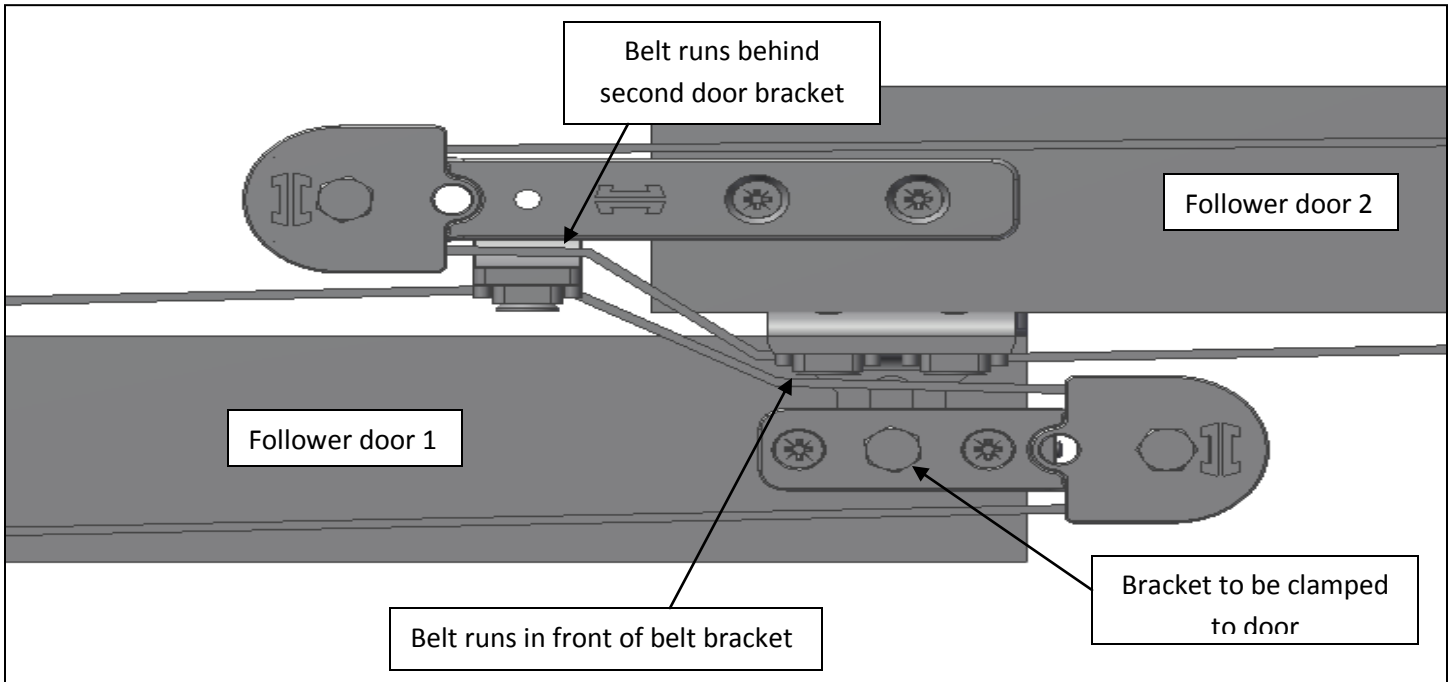
16. **THREE DOOR SYSTEM ONLY** – Add second door bracket to long arm – See system overview



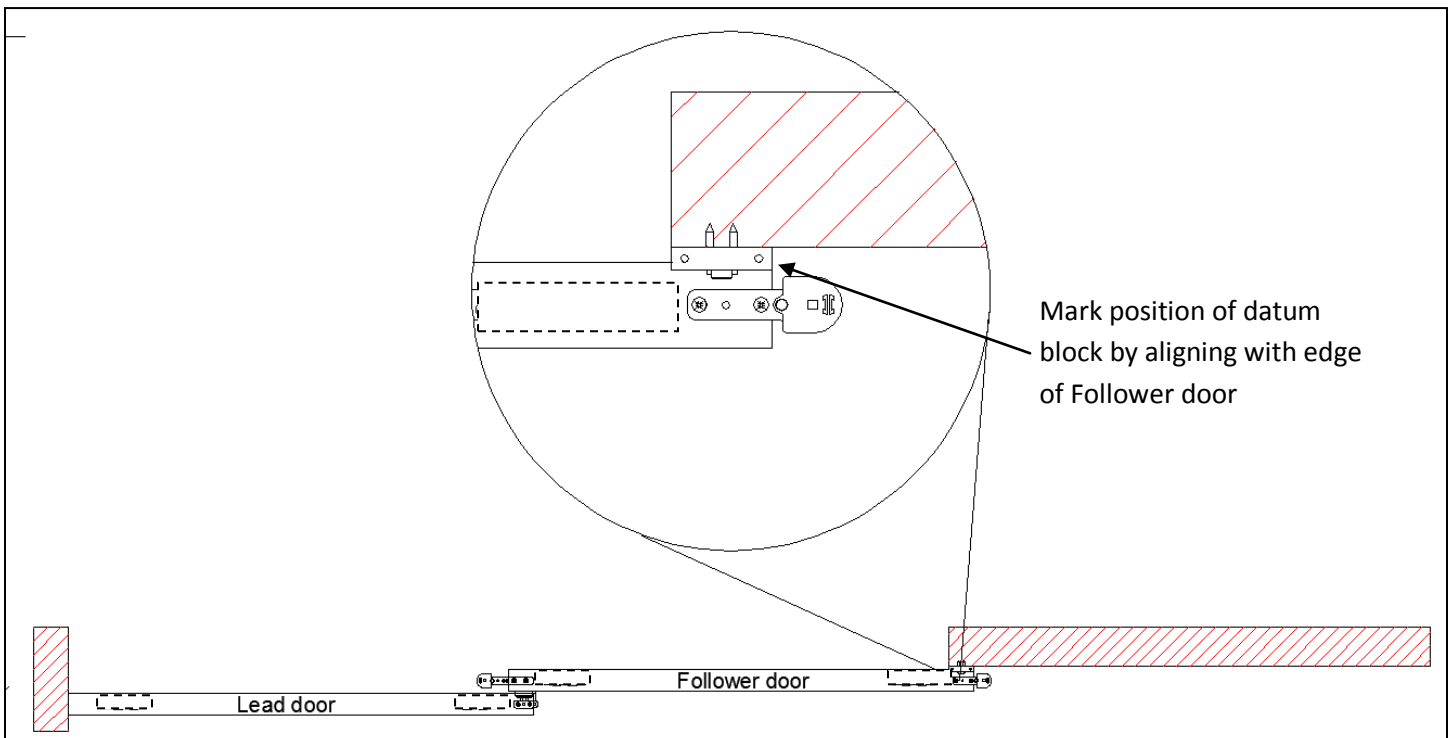
17. Three Door System Only – Connect doors



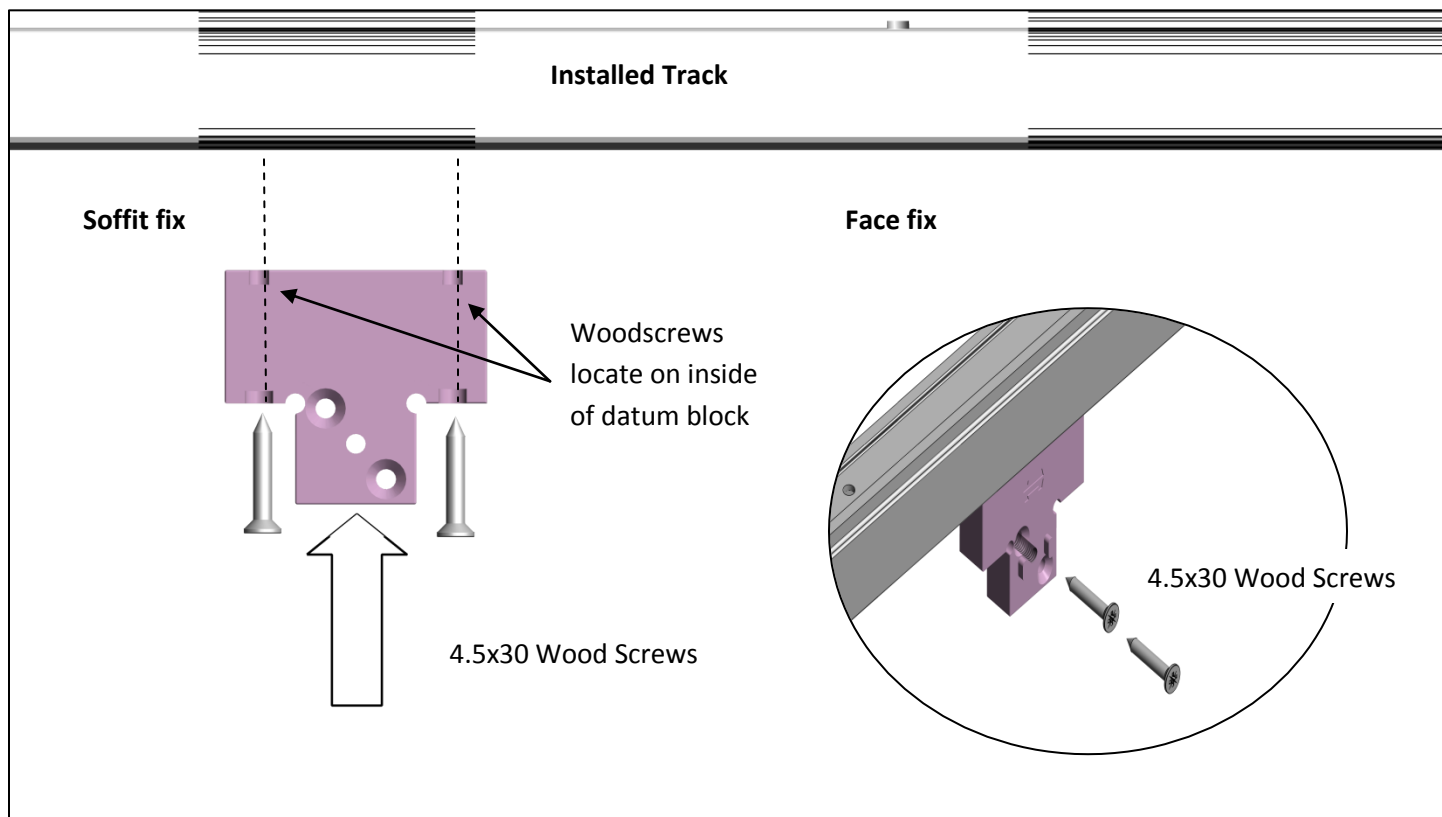
18. Three Door Belt connection overview



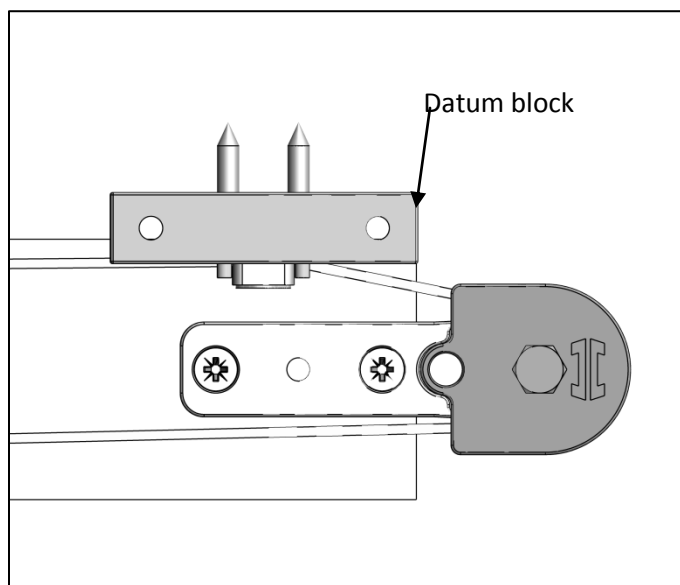
19. With doors in fully closed position mark position for datum block



20. Affix datum block – ensuring doors are able to fully traverse the track



21. Connect belt to datum block



22. Position track stops to ensure all panels are aligned in the fully open position