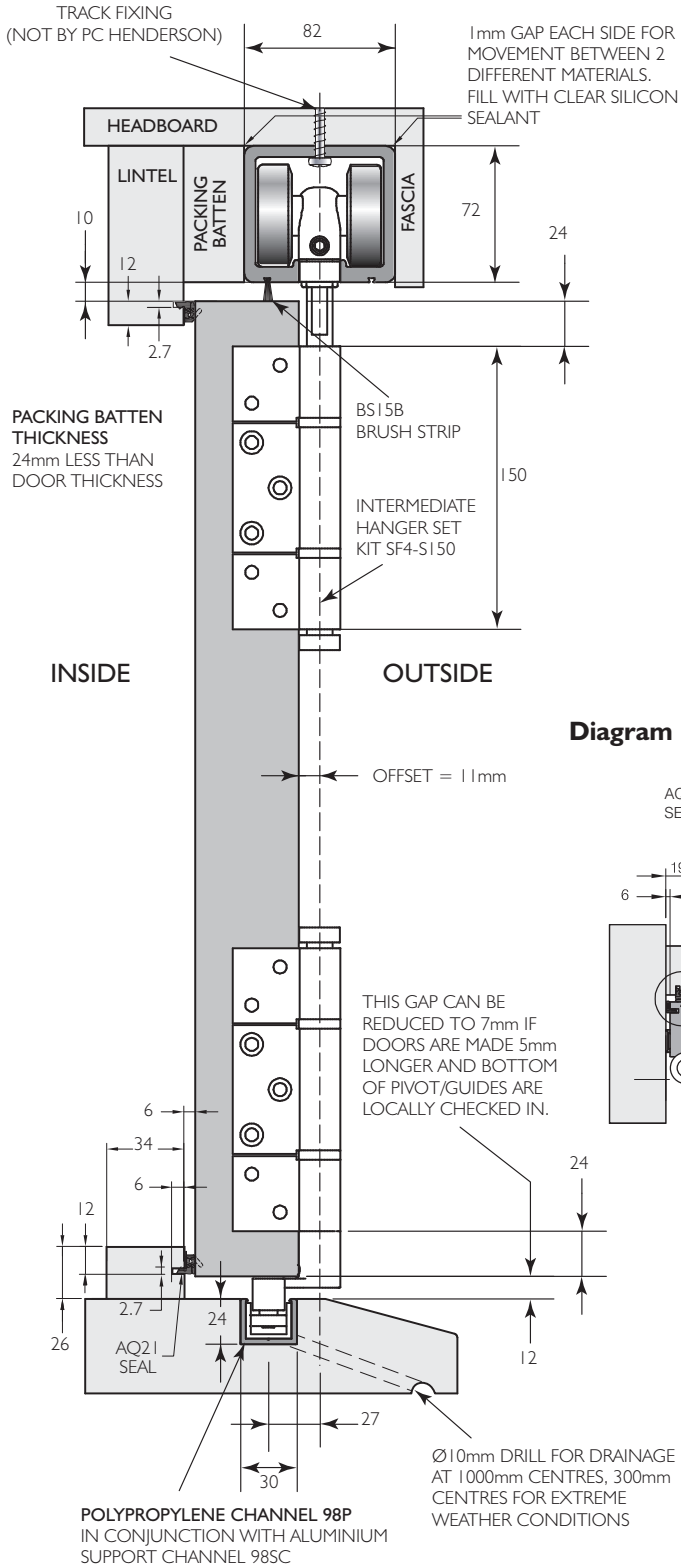


Fitting Instructions for top hung exterior folding doors

Diagram 1



SYSTEM CAPACITY

Maximum leaf height- 4000mm Maximum leaf weight- 150kg
 Maximum leaf width- 1200mm Maximum leaf thickness- 47-68mm

On systems using door leaves that are narrow and thick and the hypotenuse is more than the door width x 1.004 then a risk of camming exists (see diagram 12).
 **For thicker or thinner doors please contact PC Henderson Technical Department technical@pchenderson.com

Diagram 2

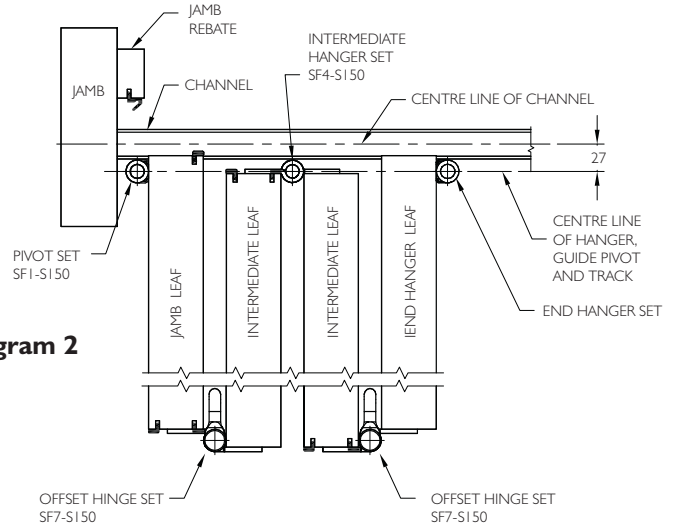


Diagram 3

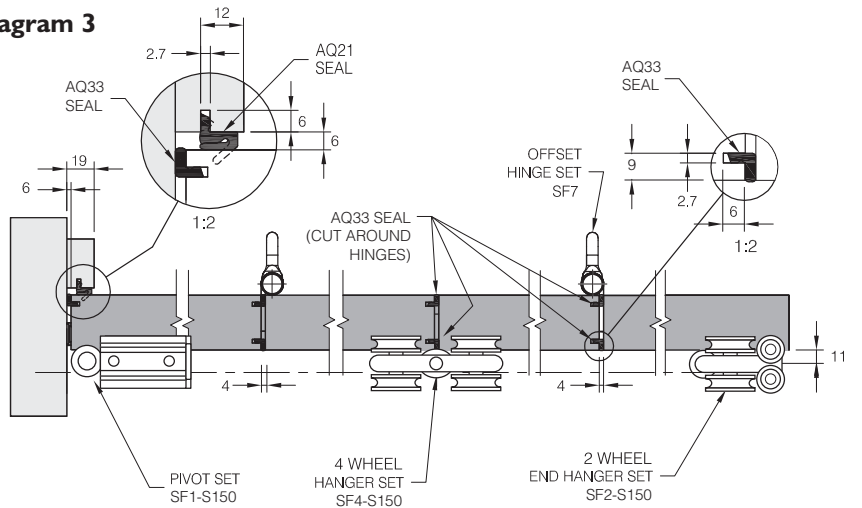
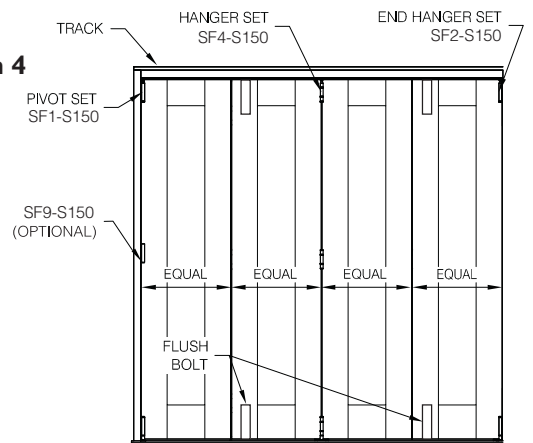


Diagram 4



TYPICAL OUTSIDE ELEVATION

PREPARATION

- SF1 - Pivot Assembly Set
- SF2 - End Hanger Set
- SF3 - Hinge Set with Handle
- SF4 - Intermediate Hanger Set
- SF7 - Hinge Set Offset Outward Opening
- SF8 - Rebated End Hanger Meeting
- SF9 - Pivot Hinge for Doors Over 2200mm High (Optional)
- SF10 - Face Fix Handle (Optional)

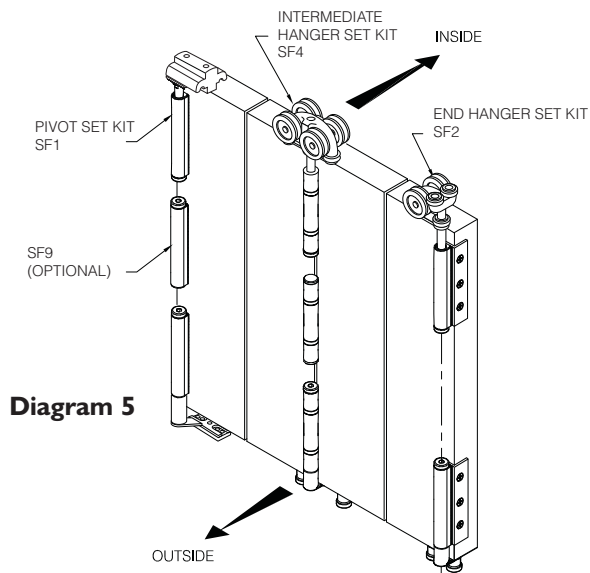
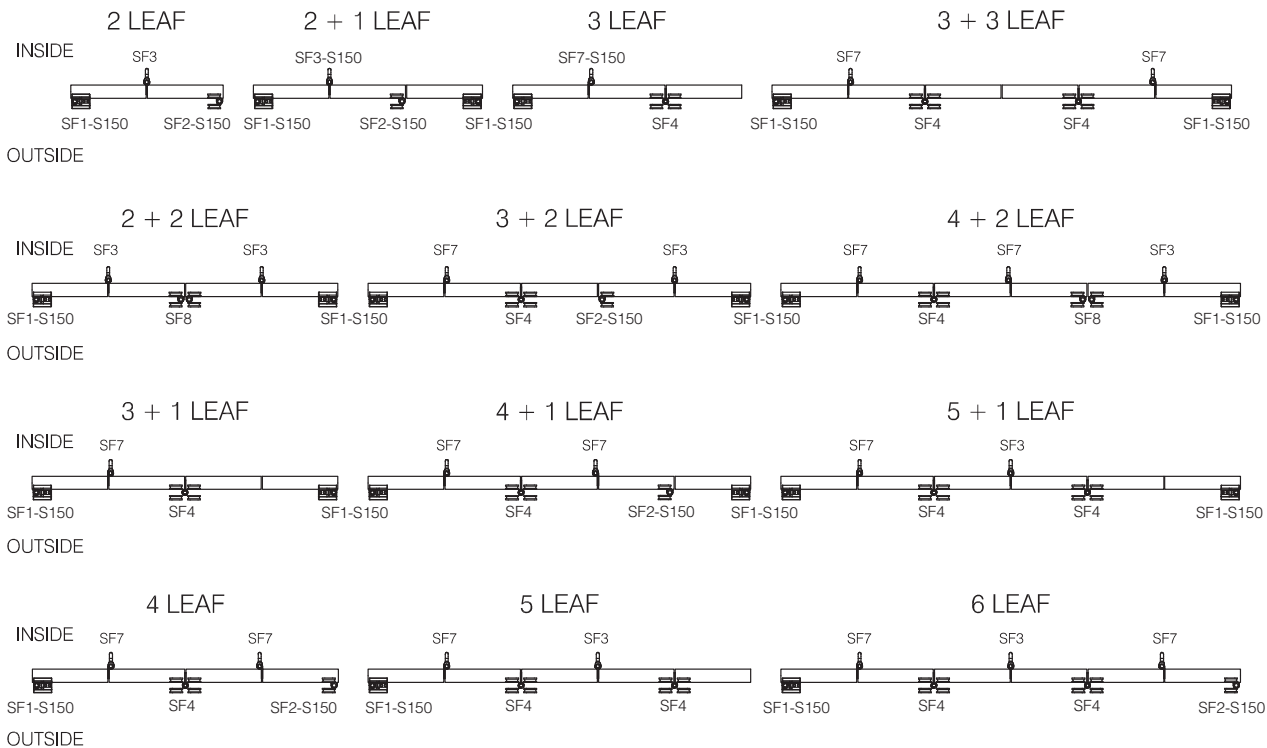


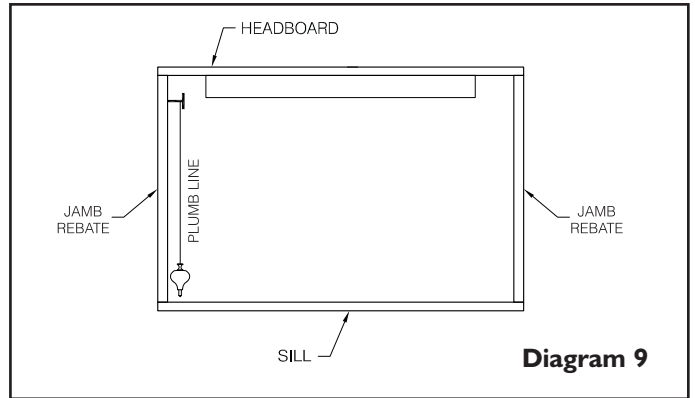
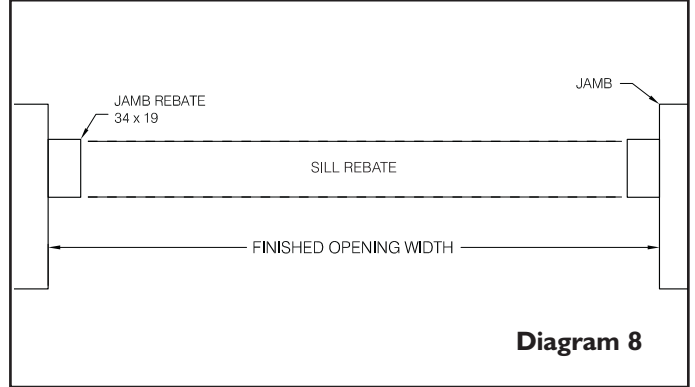
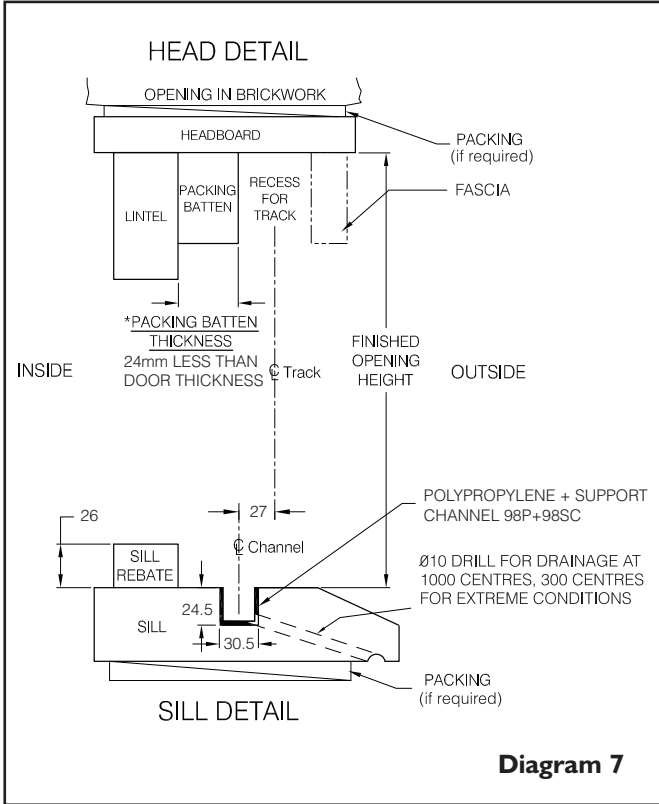
Diagram 6

DOOR HARDWARE - KIT ORIENTATION, OUTWARD OPENING

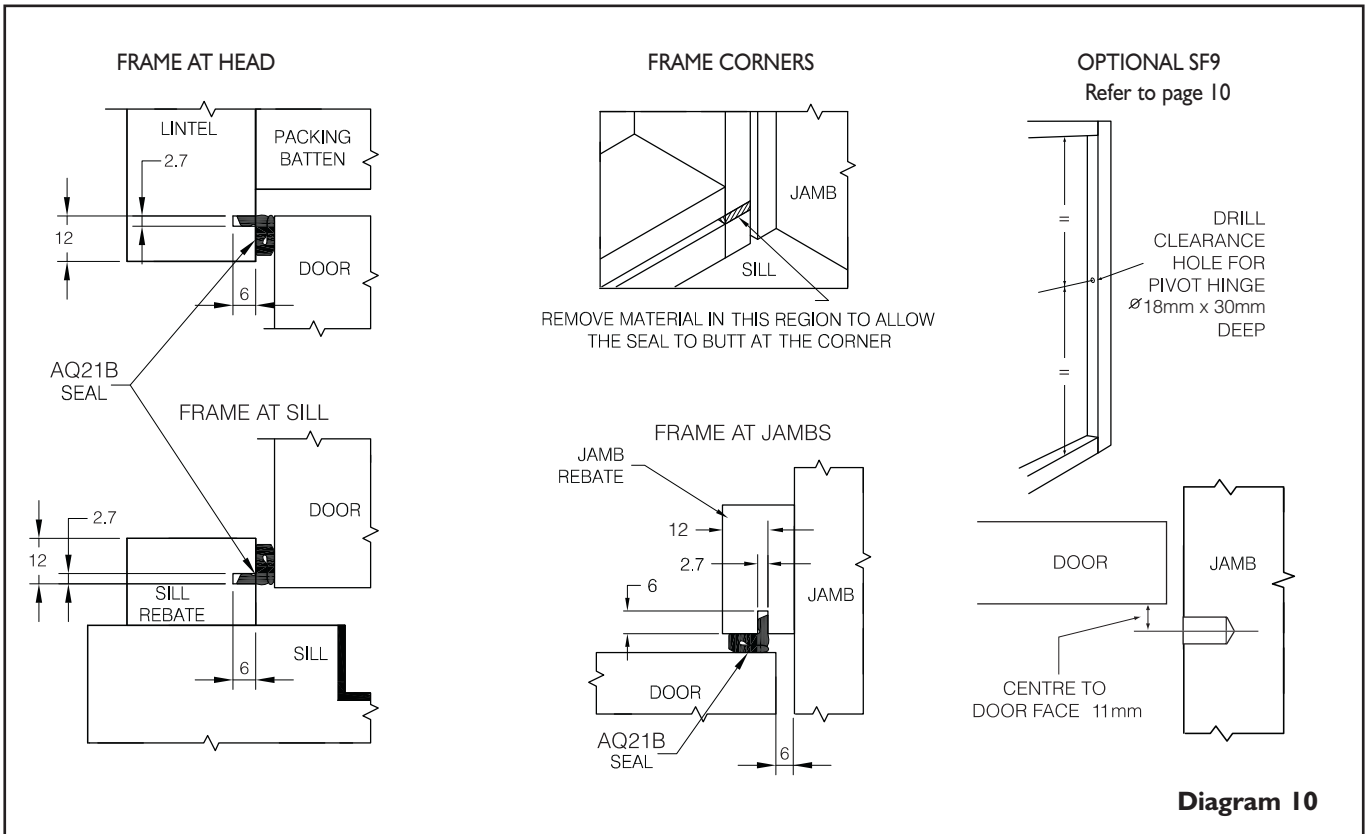


Preparing the opening

Ensure the opening is square and all load bearing areas are suitable for the weight of the system. Take particular care to ensure there is sufficient strength in the structure above the opening to take the concentrated weight of the doors, when in the open stacked position. The Securefold system provides +/- 3mm of horizontal and vertical adjustment. Use a plumb line to ensure that the centre line of the track and the centre line of the channel are offset by 27mm.



Preparing the door frame



Preparing the door leaves

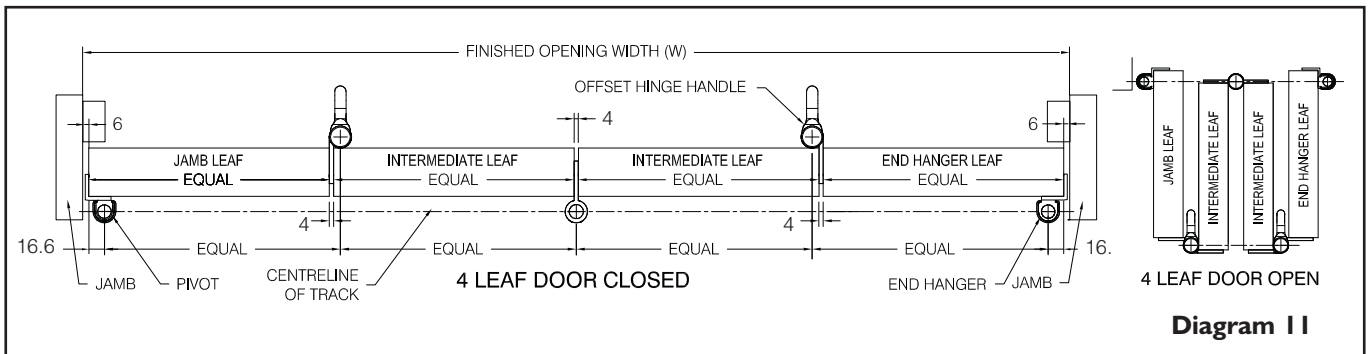
Door leaf width calculation

1. Decide how many door leaves you want in the opening.
2. Add together all the 4mm clearances required between door leaves and 6mm between the door and the jambs (there will be one more than the number of door leaves). This is the total clearance figure.
3. Measure the finished opening width (W) and deduct from this the total clearance figure.
4. Divide this new figure (finished opening width minus total clearance) by the number of doors to produce the actual door width. (N.B. all doors with the Securefold system are the same width).

For example: For a 4 door leaf system with a finished opening width of 4000mm the door leaf width would be 4000mm minus (3x4mm) + (2x6mm) divided by 4 (number of door leaves) = 994mm.

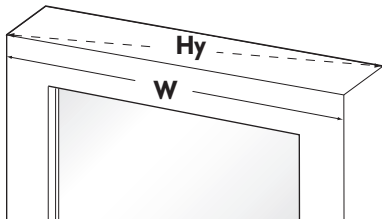
Door leaf height calculation

Leaf height = finished opening height (see diagram 7) minus 94mm.



Door seals

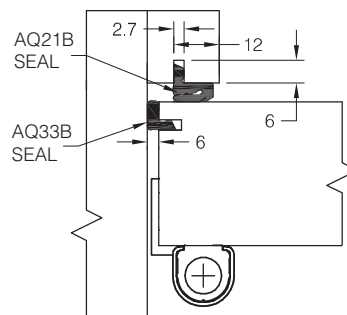
Prepare the door leaves to accept the AQ33B seal.



If the hypotenuse (Hy) is greater than the door width (W) x 1.004 then a risk of camming exists.

PREPARING THE DOOR LEAF

AT THE JAMB



BETWEEN DOOR EDGES

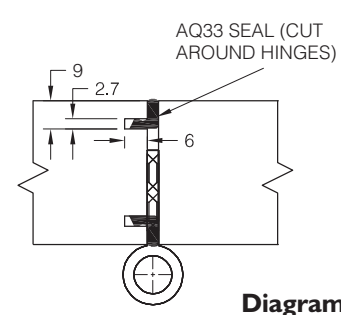
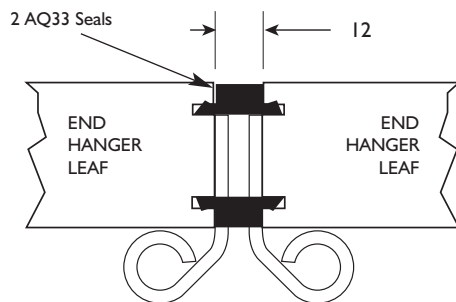
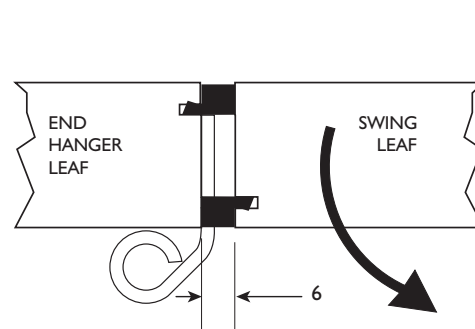


Diagram 12

SF8-S150 Meeting door set



SF2-S150 End hanger door set



Meeting doors

Use the SF8-S150 set for 2+2, 4+4, plus other multiples of square edge timber door configurations.

Diagram 13

Door hardware positioning

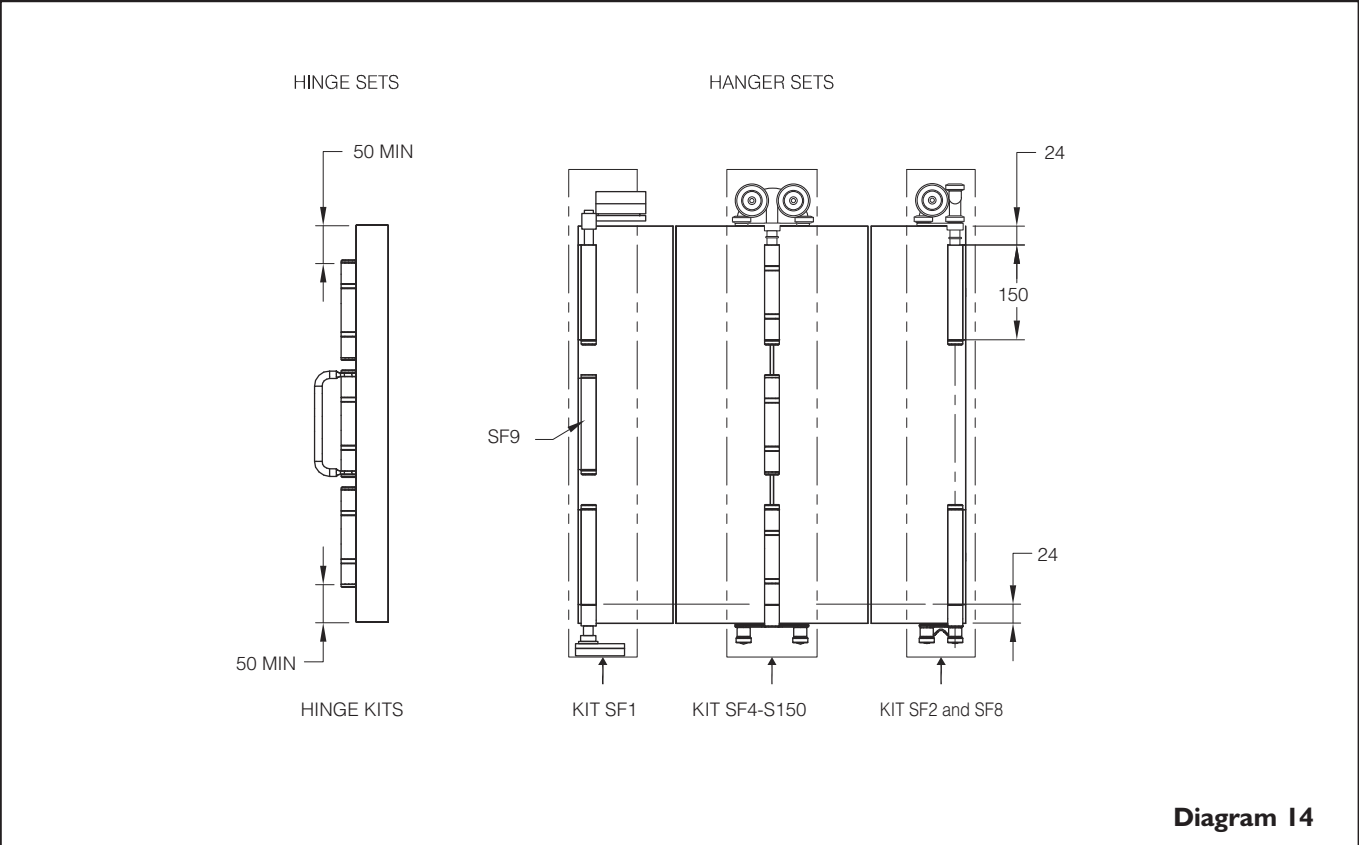


Diagram 14

End door leaf preparation

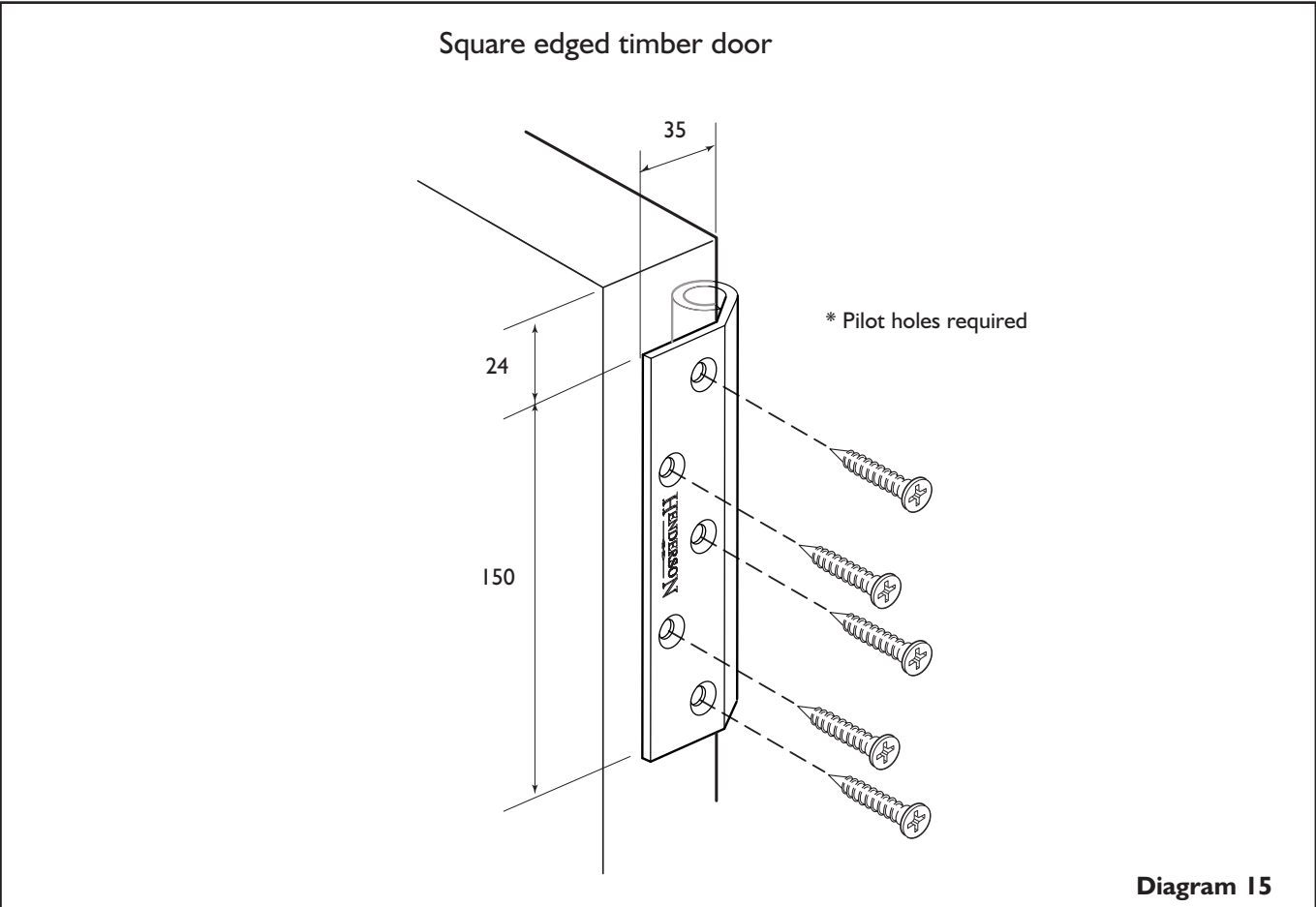


Diagram 15

Door hardware attachment * Pilot holes required

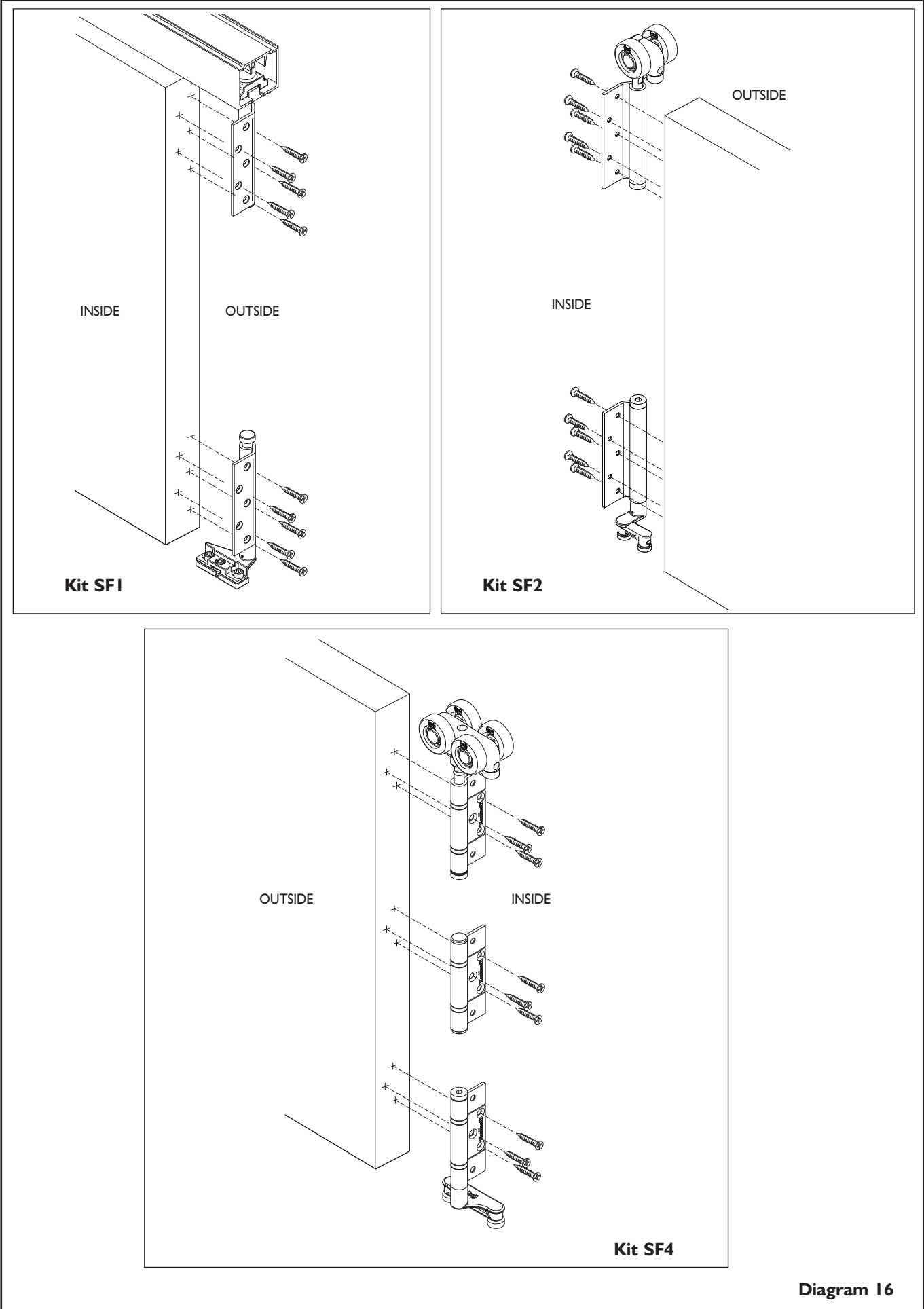


Diagram 16

INSTALLATION

1. Ensure that you have all the required parts. Unpack the components and identify the parts. Lay the parts on the ground in the same configuration as they will be when installed. It is recommended that a light smear of general purpose grease is applied to all bolts prior to assembly.

2. Cut the track to the required length and pre-drill for fixings in accordance with diagram 17. Please note that the extra fixings are required where the doors stack together. (Minimum M10 bolts recommended, consult structural engineer if in doubt).

3. Cut the channel to the required length and fit in the sill. Drill drainage holes (see diagram 1).

4. Remove all the wheel assemblies and pivot block from the hanger and pivot bolts.

5. Slide the wheel assemblies and track pivot block into the track in the correct order, orientation, and position and fix the track in position. Position top pivot as per diagram 18.

6. Remove the bottom pivot assembly and guide roller assembly (see diagram 19). Disassemble the bottom pivot assembly.

7. For installation, assemble leaves in pairs via the hinges. To improve the ease of installation pre-drill pilot holes for all hinge parts. Fit kits SF1, SF7, SF4 and SF9 (optional) to first pair of leaves.

Please ensure all screws are fixed per end hinge.

8. Screw the bottom anchor of the bottom pivot assembly to the base of the channel 4mm from the jamb. Please note, the screw nearest the end of the bottom anchor is closest to the jamb (see diagram 20). Reassemble the pivot assembly leaving the clamping screws loose (see diagram 20A).

9. Suspend pairs of leaves by engaging top pivot and hanger bolts using 6mm allen key supplied (see top of diagram 19).

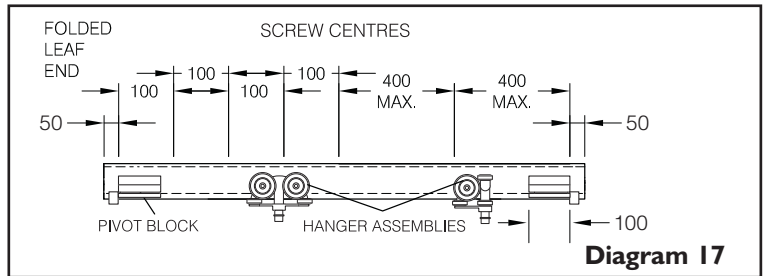


Diagram 17

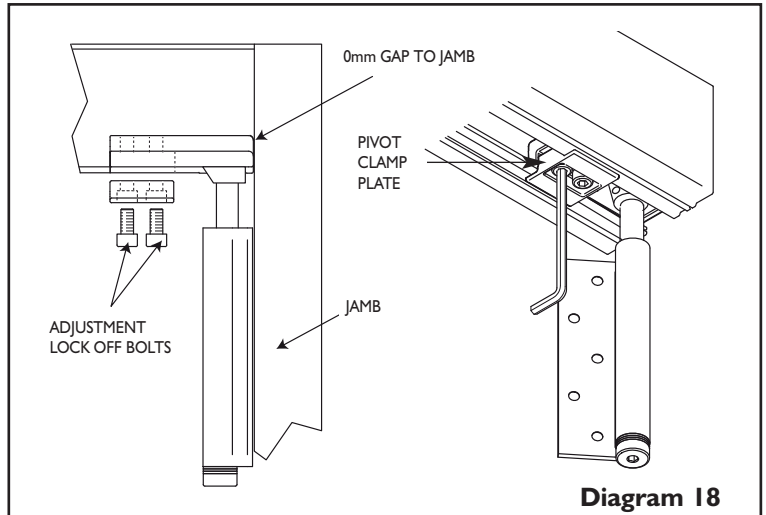


Diagram 18

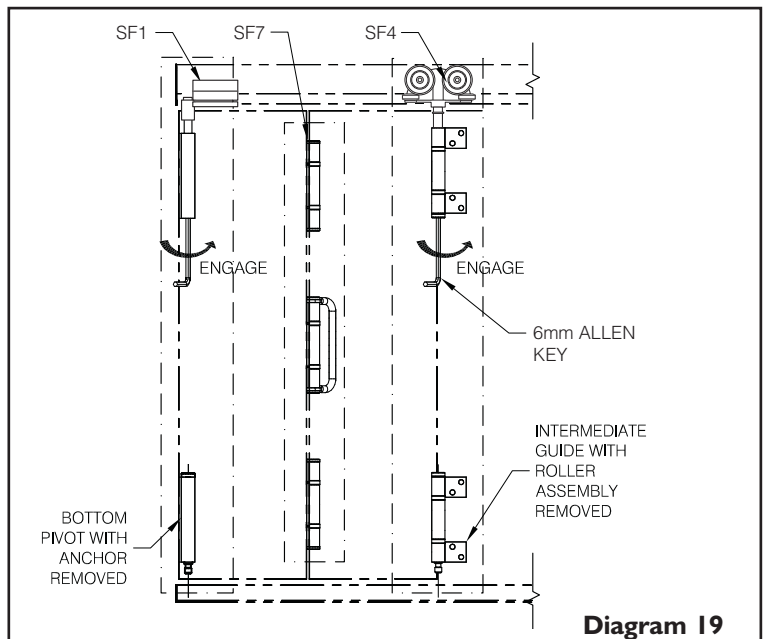


Diagram 19

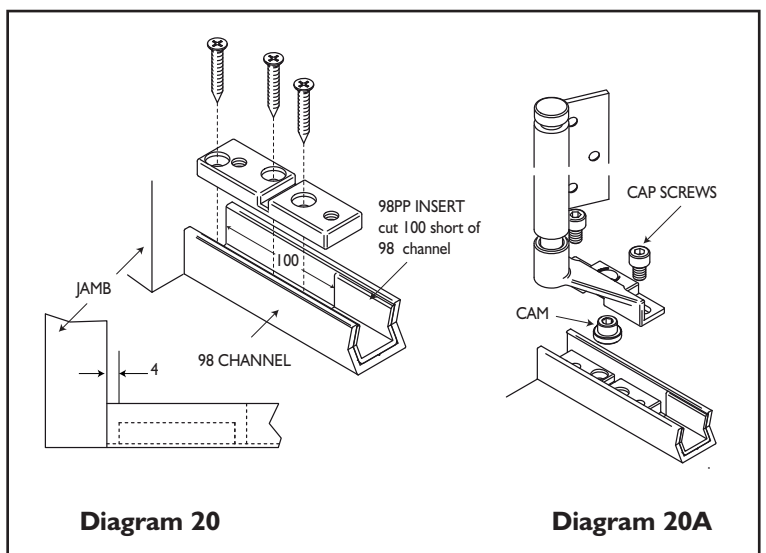


Diagram 20

Diagram 20A

10. Attach the bottom pivot and guide assembly to their respective hinges, adjust the bottom pivot side plates position so that it engages with the hinge bolt. Adjust pivot and guide strap bolts (see diagram 21) - Do not fully tighten.

11. Lift the next pair of leaves into position and support their weight by screwing the hanger strap bolt into the hanger wheel assembly and fixing the second and third leaves together.

12. Continue this procedure until all leaves are fitted.

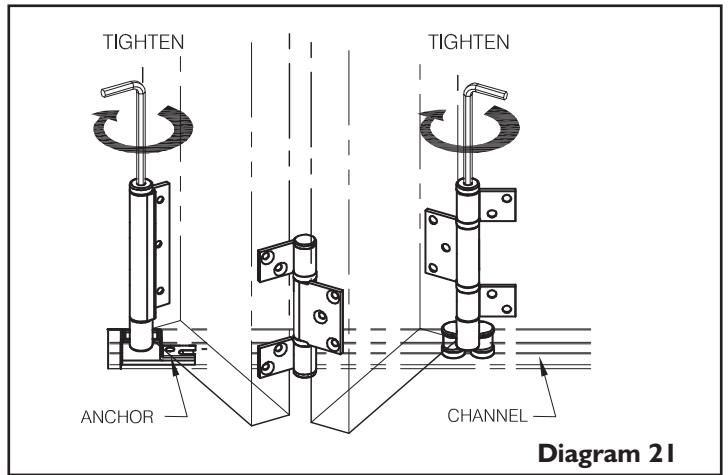


Diagram 21

ADJUSTMENT

Height Adjustment ($\pm 3\text{mm}$)

1. Close leaves and adjust the door height to achieve an equal gap between the top of the leaves and the track (a 10mm gap is recommended). (see diagram 22).
2. Once the adjustment is complete use the allen key to tighten the locking hanger grub screw until secure. (See diagram 22 top and diagram 24 bottom).

Lateral Adjustment

1. With the unit still in the closed position, slide the set of leaves towards the jamb to obtain the desired gap between the jamb and the pivot door. A gap of 6mm is recommended using the adjustment cam. Once in position tighten the clamp screws. (see diagram 23).
2. Fold the leaves and adjust the bottom side plate using the allen key provided so that the gap between the door and the jamb is the same over the full length of the door.
3. Tighten the two clamping screws to lock the side plate to the bottom anchor.
4. Once the pivot door is in the correct position tighten the locking pivot grub screw (as shown in diagram 22 top and diagram 24 bottom).

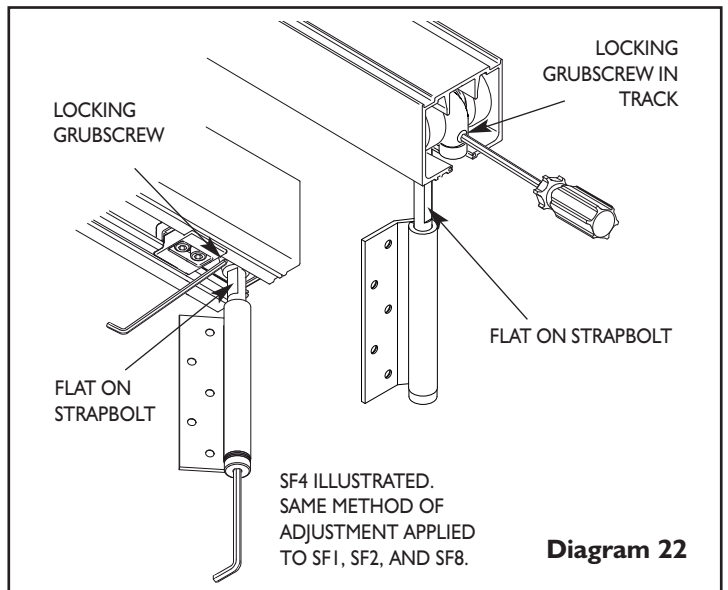


Diagram 22

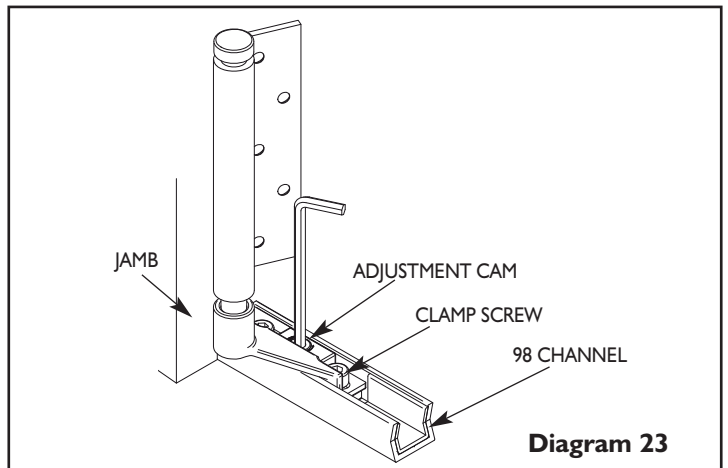


Diagram 23

CARE AND MAINTENANCE

To provide years of trouble free operation, it is recommended that the track is kept free from dirt and debris. Periodically replace the general purpose grease on all bolts. To prolong the appearance of the exposed hinge parts, it is recommended they are periodically washed with soap and water. Maintenance is required on all components including stainless steel to validate manufacturers warranty. For further maintenance details please refer to our website.

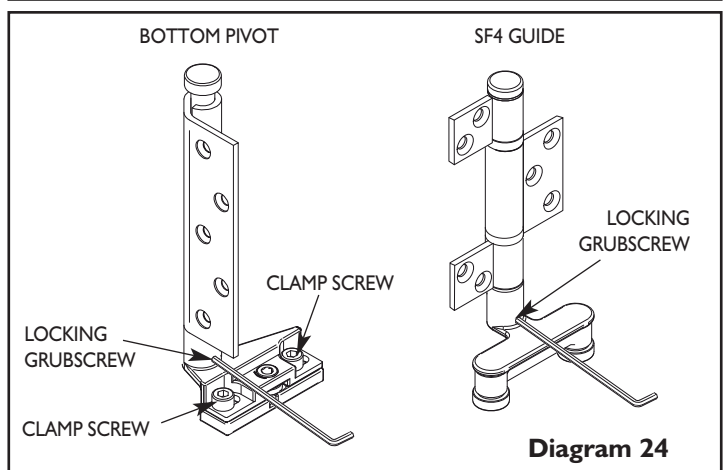
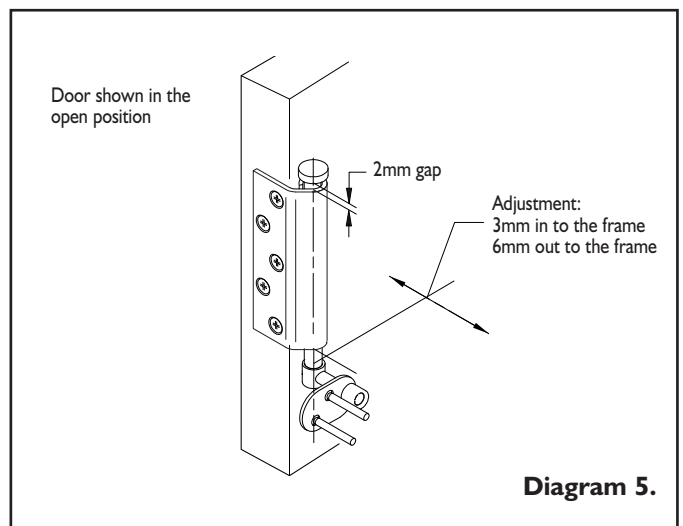
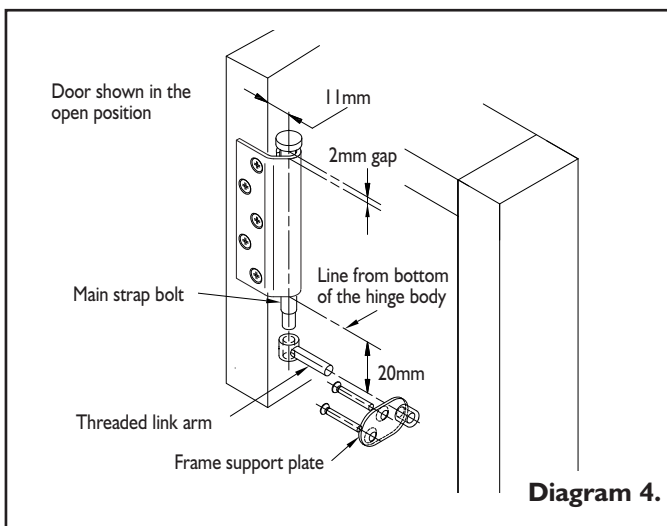
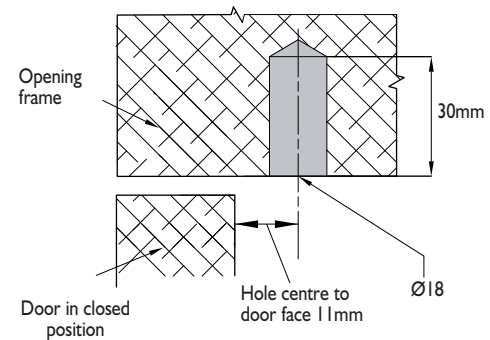
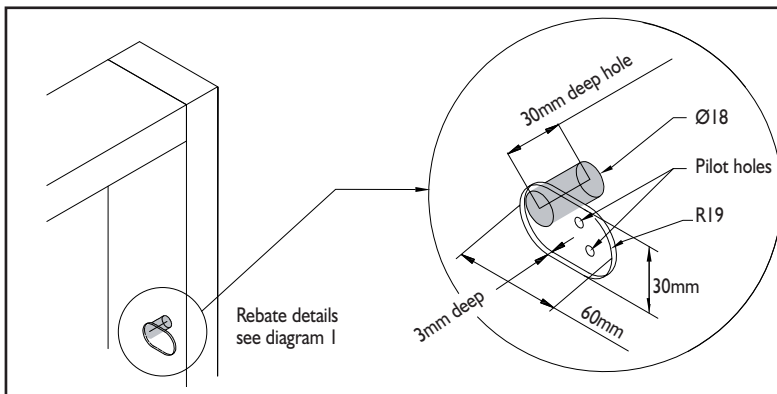
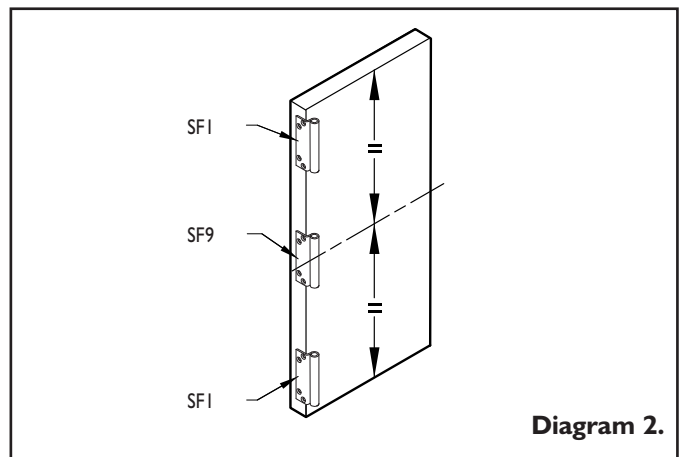
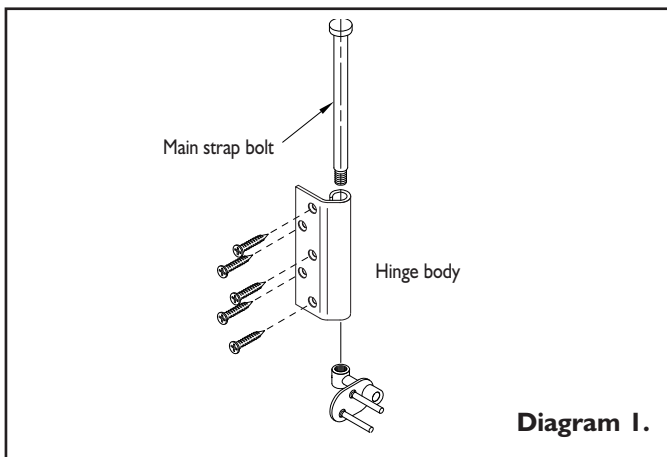


Diagram 24

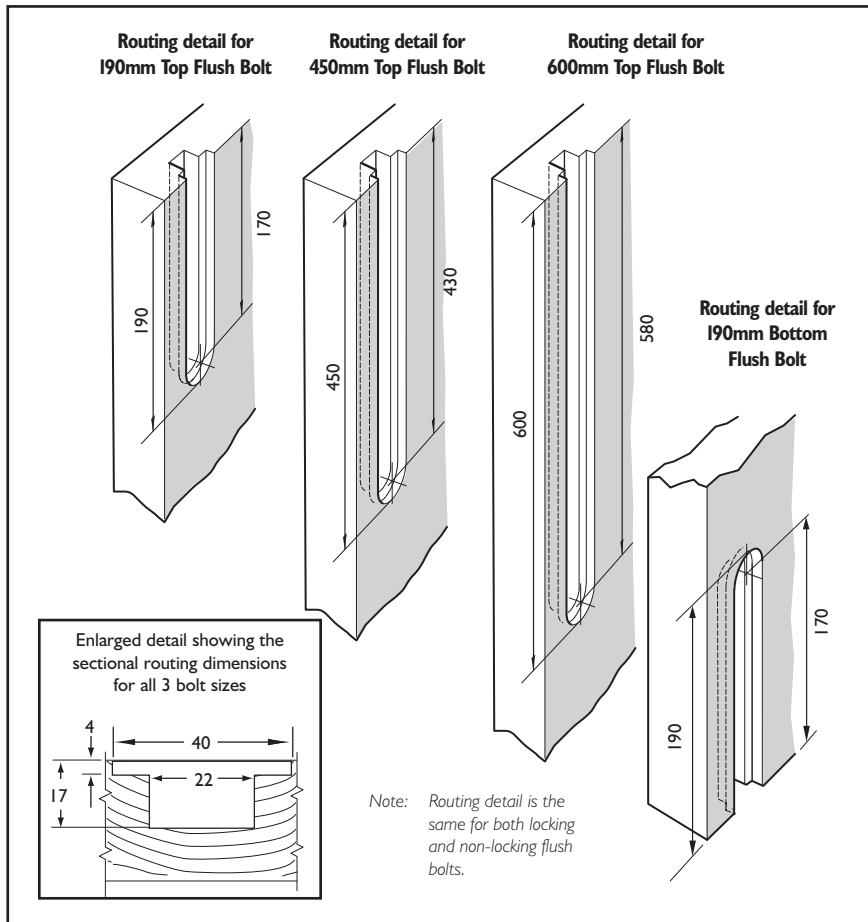
SF9 150kg Intermediate Pivot Set

- The Securefold SF9 intermediate pivot set shown in Diagram 1, should be fitted to the pivot door approximately mid way between the SF1 top and bottom pivot assemblies. The SF9 hinge must be positioned on the same centre line as the SF1 top and bottom pivot hinge bodies.
 - Prepare the frame for the opening by drilling a $\text{Ø}18\text{mm}$ hole (as shown in Diagram 3), ensuring that the centre point of the hole is 20mm lower than the bottom of the hinge body as shown on Diagram 4. Rebate the frame support plate, if required.
 - Screw the frame support plate on to the opening frame preparation, as shown in Diagram 3.
 - Fit the pivot door into position using the SF1 pivot set.
 - Fit the SF9 hinge leaf and drop the hinge strap bolt into position, as shown in Diagram 4.
 - Screw the threaded link arm fully into the frame support plate. The centre of the threaded hole in the link arm should be positioned to receive the strap bolt. Screw the strap bolt in to the link arm until there is a 2mm gap between the head of the strap bolt and the hinge body, as shown in Diagram 4.
 - Adjust the SF9 pivot set to ensure the clearance between the pivot door and the frame is uniform (Diagram 5).
- Note: These fitting instructions should be used in conjunction with the Securefold 150kg Fitting Instructions

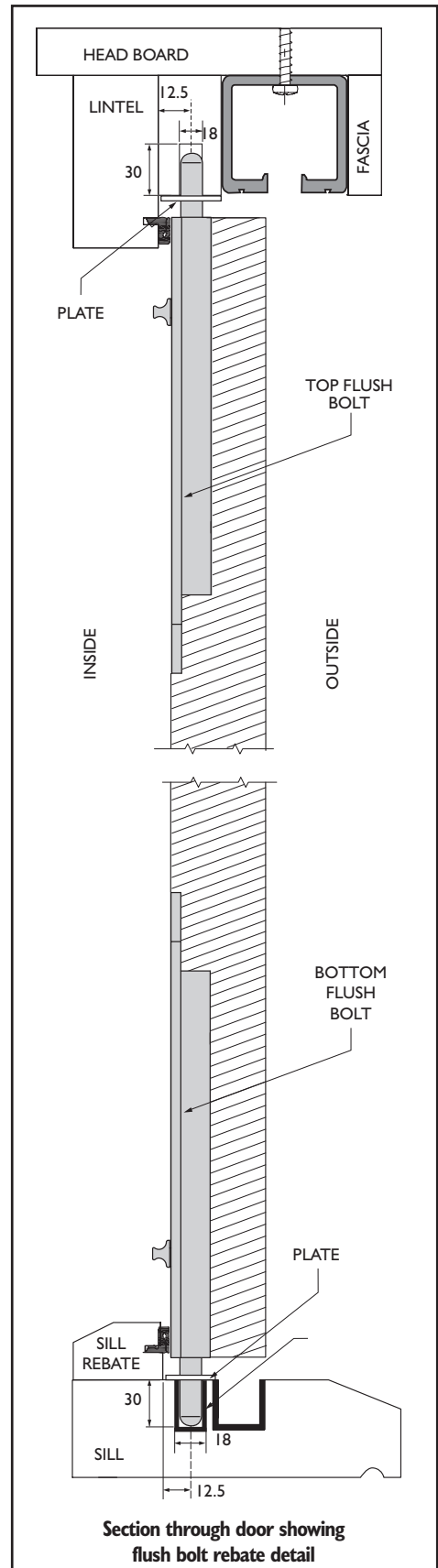
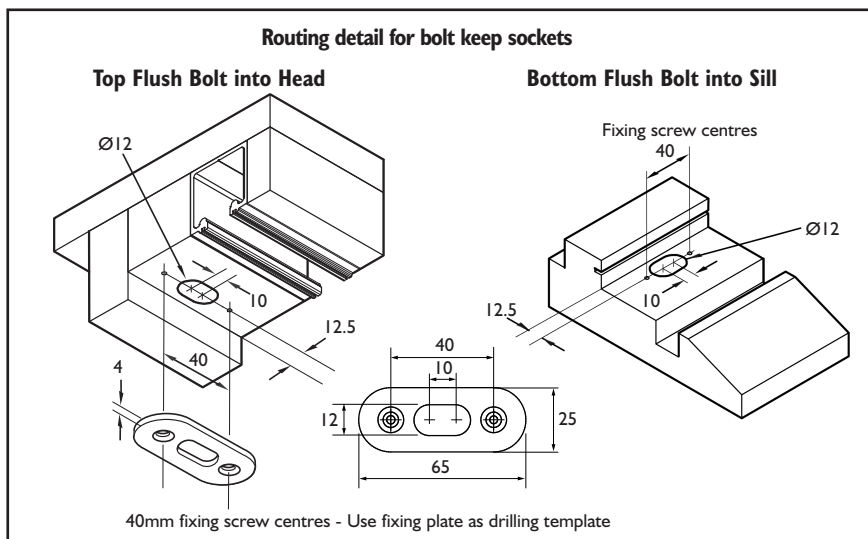


Outward Opening Flush Bolt

For top hung exterior folding doors. For use in conjunction with Securefold 150kg fitting instructions. Follow routing instructions for the bolt keep and flush bolt length to be fitted, fit both with the screws supplied. Suitable pilot holes for screws are recommended. Instructions are for doors 52-68mm thick.



Door height	Recommended Bolt length for top of door	Recommended Bolt length for bottom of door
Upto 2200mm	190mm	190mm
Upto 2450mm	450mm	190mm
Over 2450mm	600mm	190mm



(All dimensions in mm)