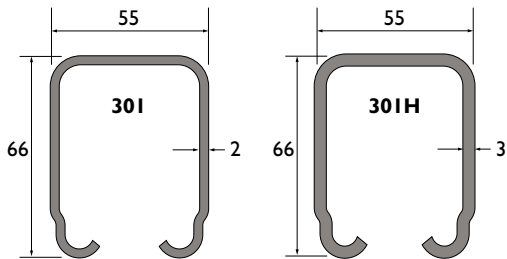


# System 30I & 30IH

## universele onderdelen

30I

Rail:



Model: 30I & 30IH

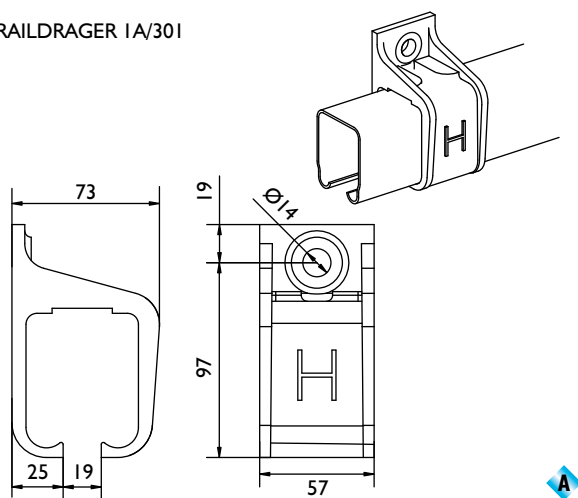
Materiaal: koudgewalst staal, gegalvaniseerd volgens sendzimir procédé.

Lengtes: 2000, 3000, 4000, 5000 en 6000mm

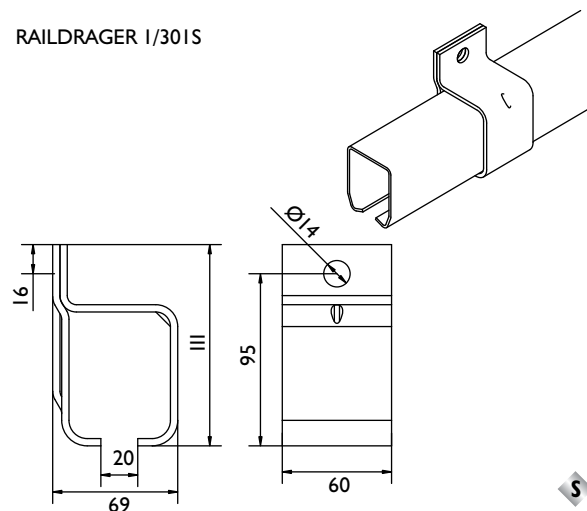
Bevestigingsgaten: geen

Raildragers - wandbevestiging:

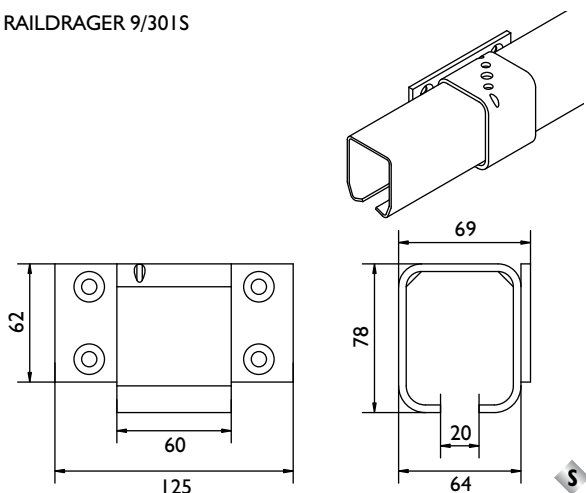
RAILDRAGER 1A/30I



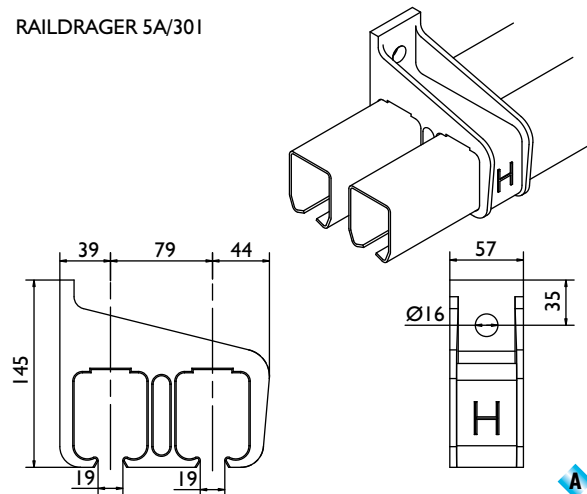
RAILDRAGER 1/30IS



RAILDRAGER 9/30IS



RAILDRAGER 5A/30I



Legenda:

- |                                  |                          |
|----------------------------------|--------------------------|
| <b>H</b> = Houten deur           | <b>S</b> = Staal         |
| <b>S</b> = Stalen deur           | <b>A</b> = Aluminium     |
| <b>M</b> = Messing geleidewielen | <b>S</b> = Stalen wielen |
|                                  | <b>N</b> = Nylon wielen  |

Opmerking:

Verbindings-raildragers worden aanbevolen op elke railverbinding, bij het specificeren de letter "X" toevoegen.

Toevoeging **C** = gesloten raildrager  
 Toevoeging **LC** = links gesloten raildrager  
 Toevoeging **RC** = rechts gesloten raildrager

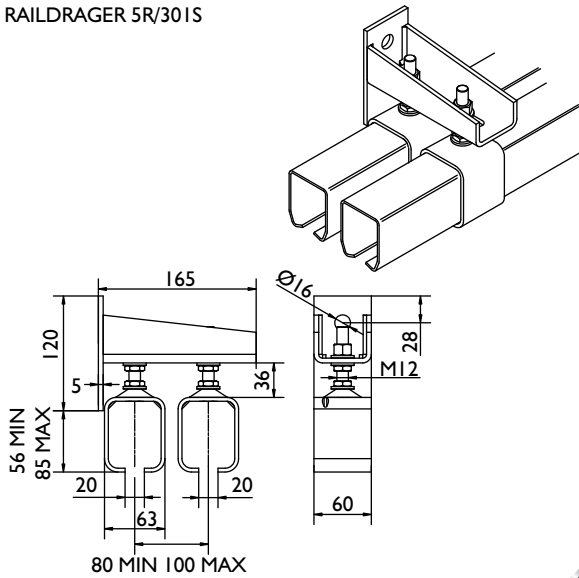
Gesloten raildragers dienen aan beide eind van de totale railbaan te worden gemonteerd en dienen uitsluitend voor het afsluiten van de rail, niet als deurbuffer gebruiken.

# System 30I & 30IH

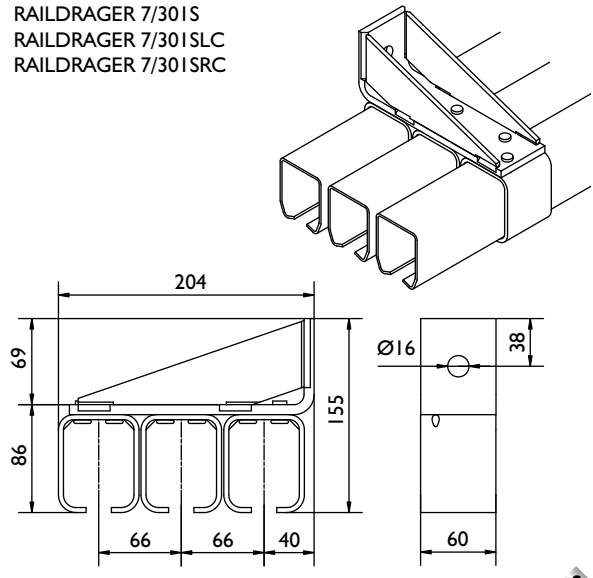
## universele onderdelen

### Raildragers - wandbevestiging:

RAILDRAGER 5R/30IS



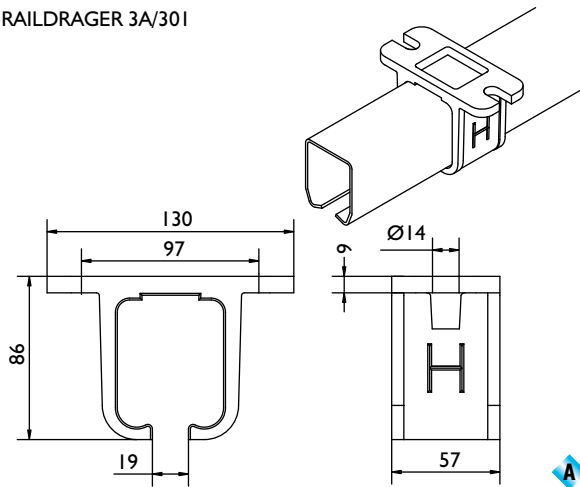
RAILDRAGER 7/30IS  
RAILDRAGER 7/30ISLC  
RAILDRAGER 7/30ISRC



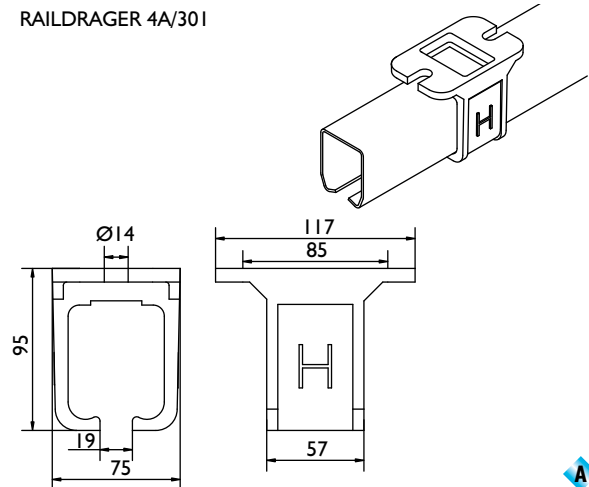
30I

### Raildragers - plafondbevestiging:

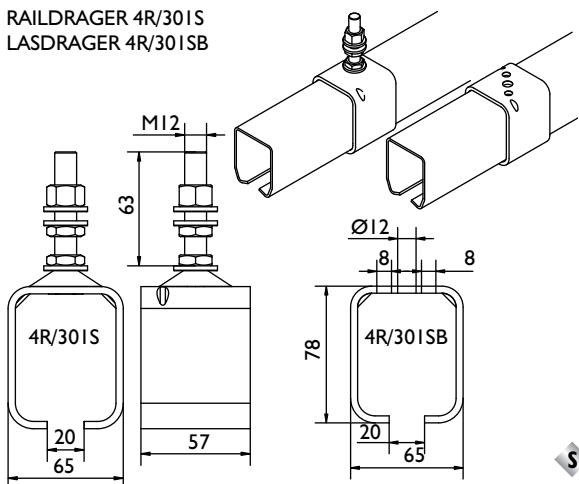
RAILDRAGER 3A/30I



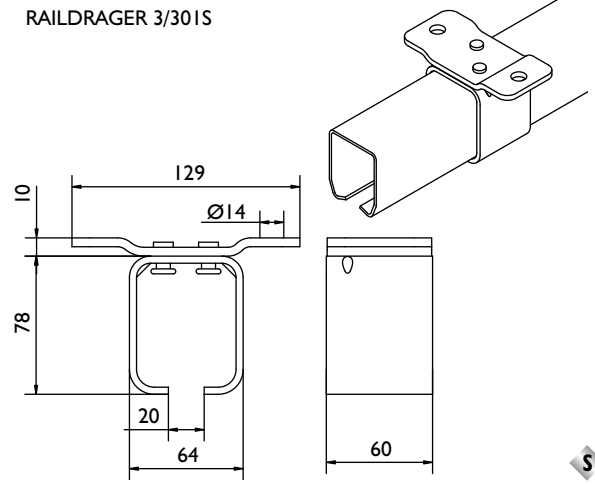
RAILDRAGER 4A/30I



RAILDRAGER 4R/30IS  
LASDRAGER 4R/30ISB



RAILDRAGER 3/30IS

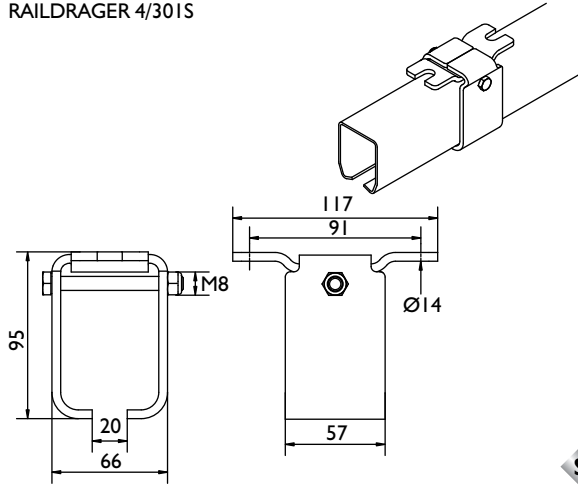


# System 30I & 30IH

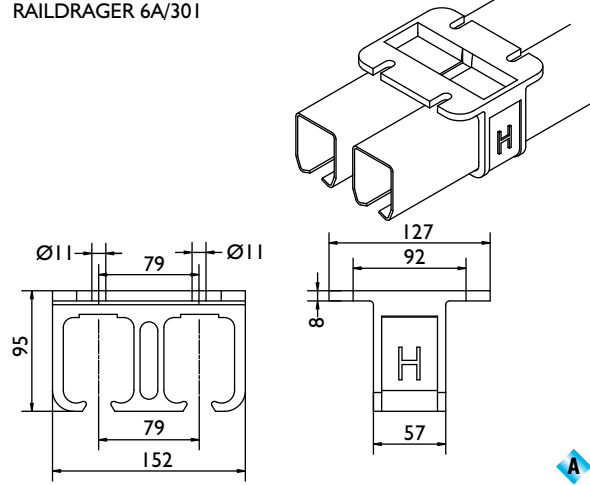
## universele onderdelen

### Raildragers - plafondbevestiging:

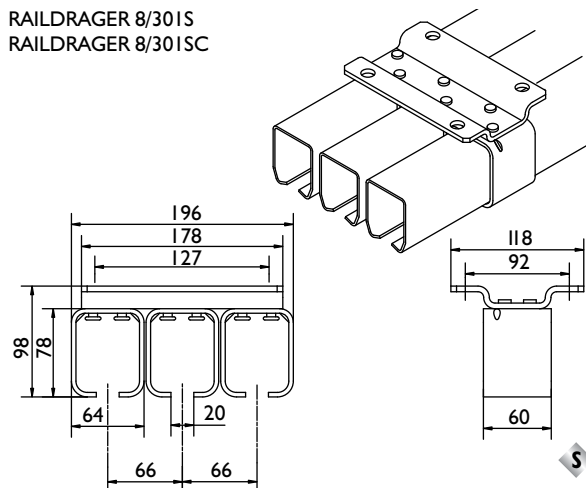
RAILDRAGER 4/30IS



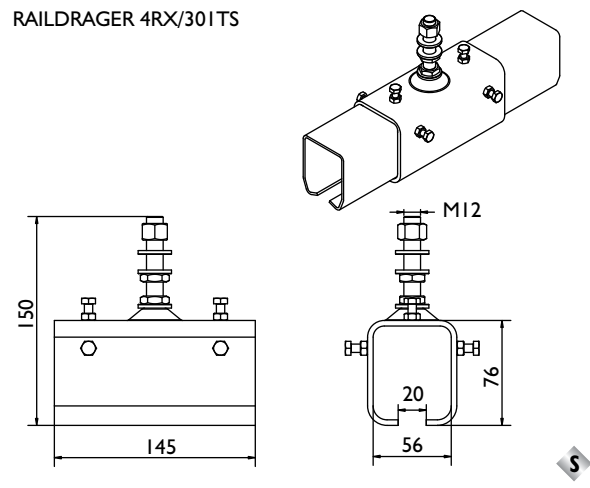
RAILDRAGER 6A/30I



RAILDRAGER 8/30IS  
RAILDRAGER 8/30ISC

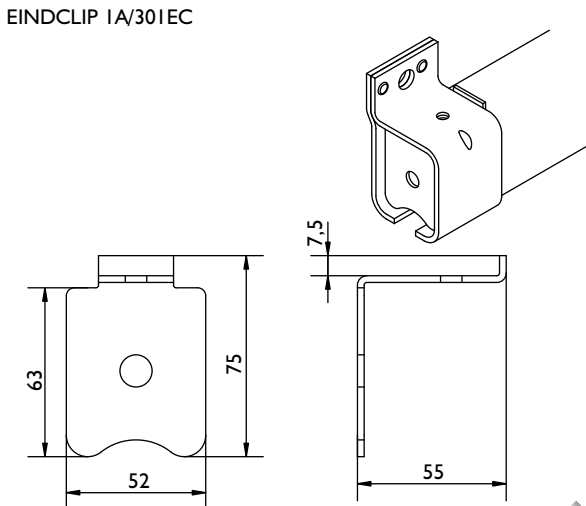


RAILDRAGER 4RX/30ITS



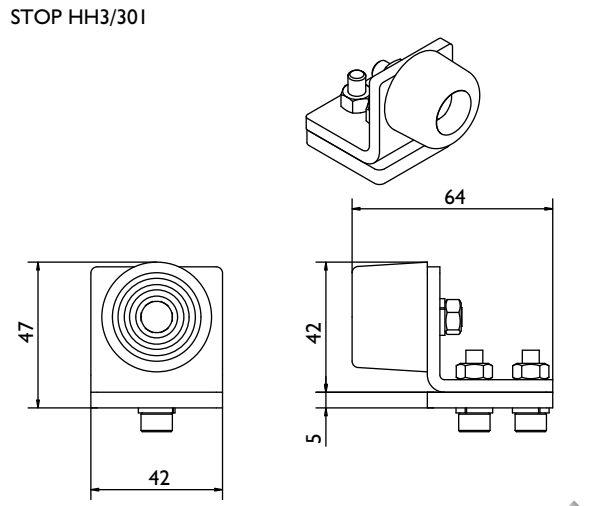
### Specials:

EINDCLIP 1A/30IEC



Eindclip ter afdichting en blokkering van de rail.  
Bruikbaar i.c.m. raildrager: 1, 1A, 3A, 4A, 5A, 6 en 9A

STOP HH3/30I



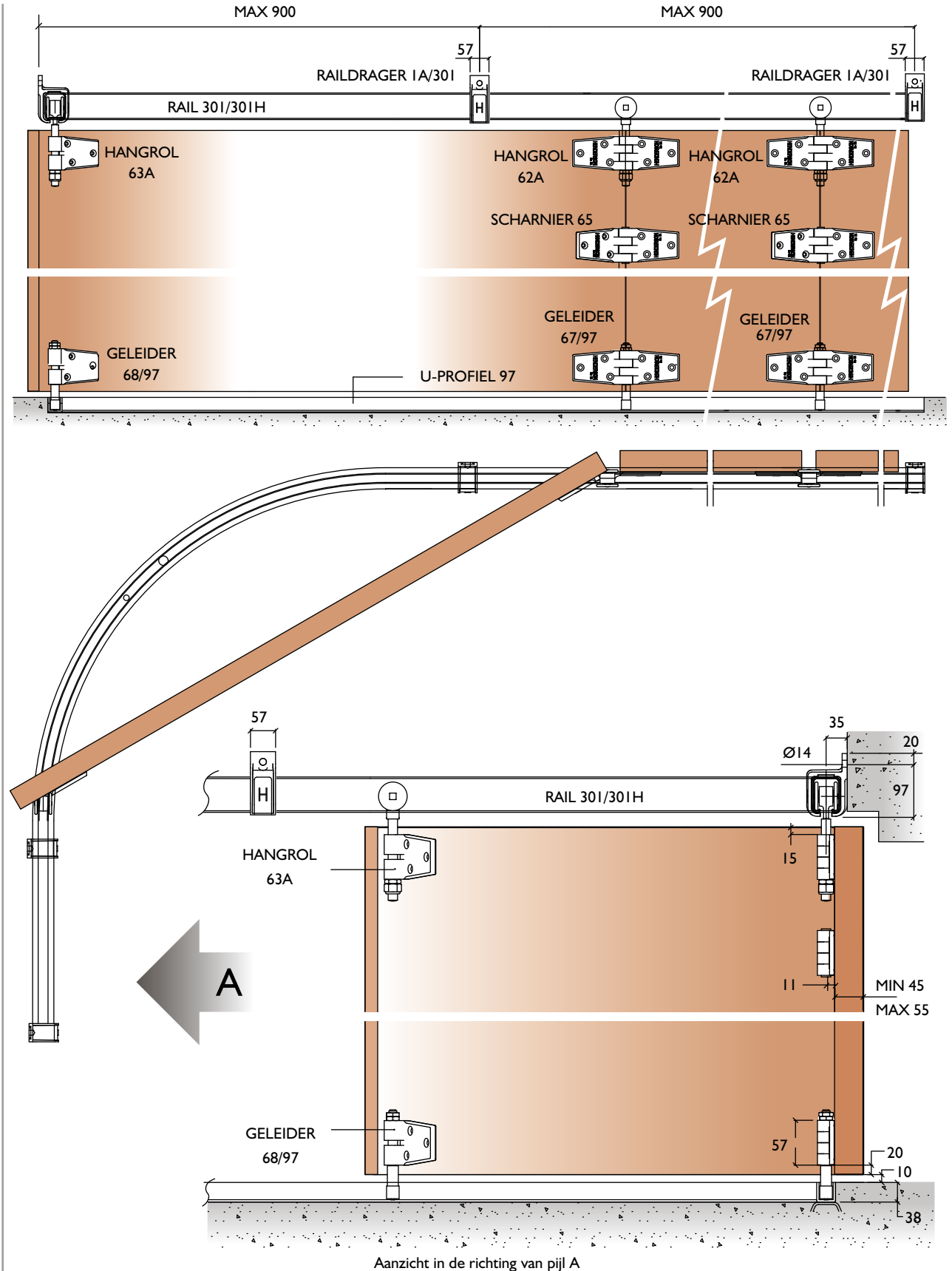
Voor bevestiging in de rail, staal gegalvaniseerd met  
stootbuffer.

# System 30I & 30IH

tangent beslag  
om-de-hoek schuivend

|             |          |         |           |            |
|-------------|----------|---------|-----------|------------|
| System 30I  | 55kg max | 35-55mm | 900mm max | 3300mm max |
| System 30IH | 70kg max | 35-55mm | 900mm max | 3600mm max |

## System opstelling:



30I

# System 30I & 30IH

tangent beslag  
om-de-hoek schuivend

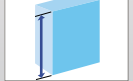
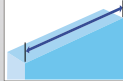
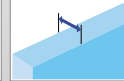
System 30I

55kg max

35-55mm

900mm max

3300mm max



System 30IH

70kg max

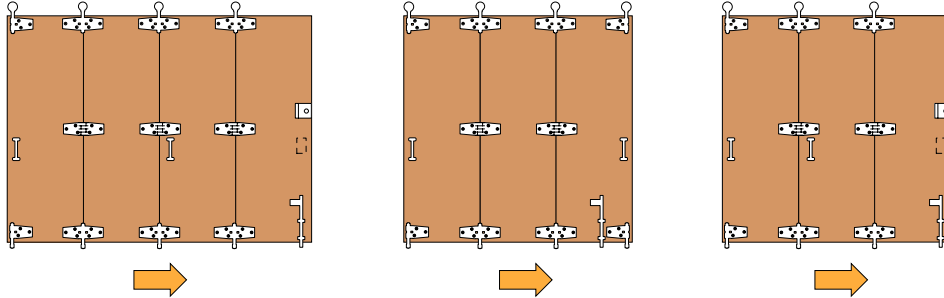
35-55mm

900mm max

3600mm max

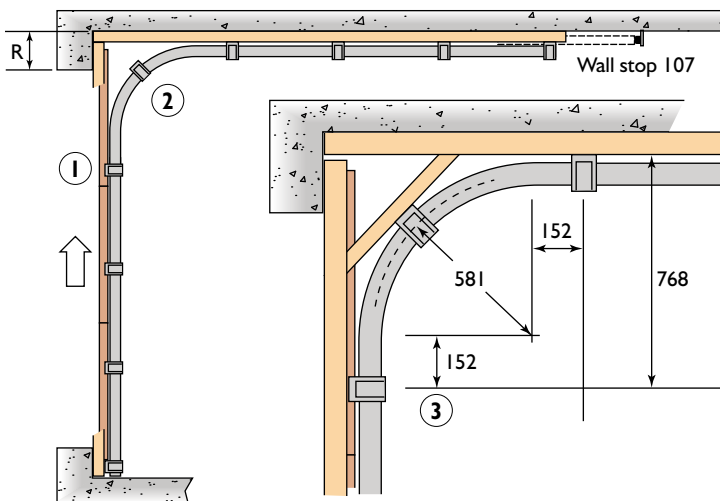


Voorbeeld opstelling:



30I

Toelichting:



- 1 Als penant "R" minder is dan 685mm is een draaideur onder de bocht noodzakelijk.
- 2 Slechts 1 open raildrager in het midden van de bocht.
- 3 Recht stuk van 152mm op elk bochteinde.

### Opmerking:

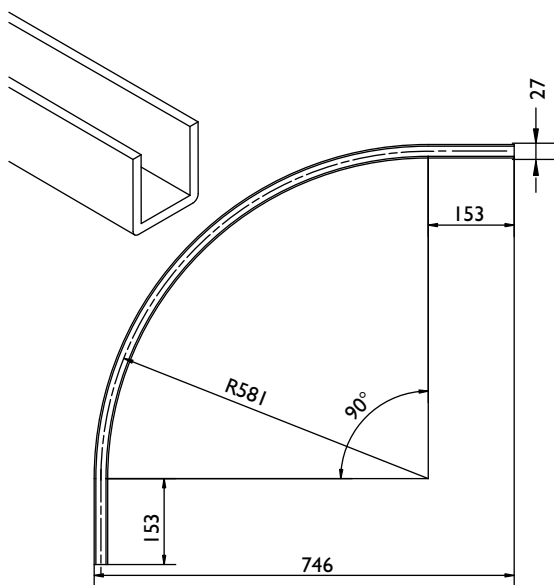
Deuren schuiven weg langs de zijmuur en laten de gehele opening vrij, naar één of beide kanten schuivend.

De eerste deurvleugel onder de bocht kan als draaideur worden toegepast.

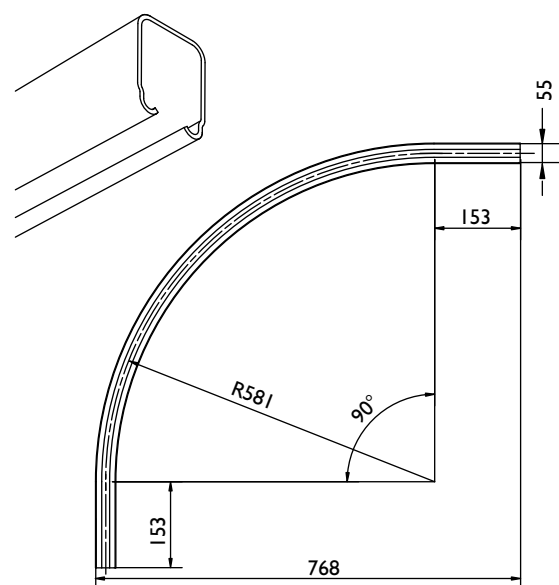
Bij hoge en zware deuren dient een draaideur, als deel van het garnituur, te worden vermeden. Beter is deze apart aan de kozijnstijl af te hangen.

Boven - / onderbocht:

ONDERBOCHT 601/97



BOVENBOCHT 600B/600BH



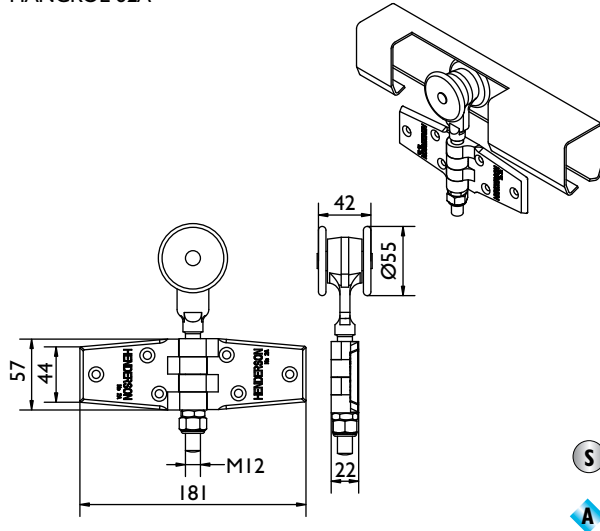
# System 30I & 30IH

tangent beslag  
om-de-hoek schuivend

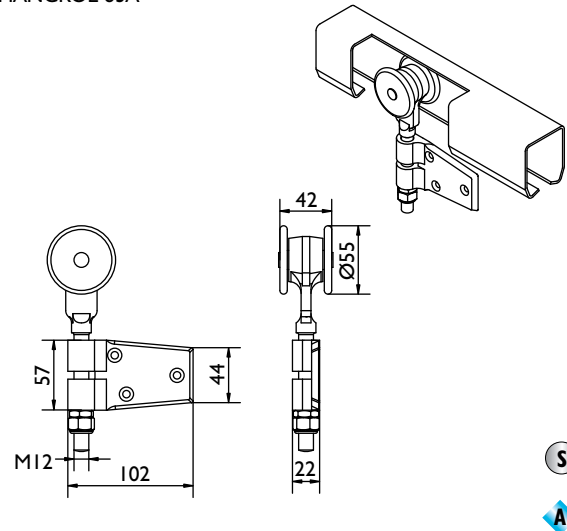
| System 30I  | 55kg max | 35-55mm | 900mm max | 3300mm max |
|-------------|----------|---------|-----------|------------|
|             |          |         |           |            |
| System 30IH | 70kg max | 35-55mm | 900mm max | 3600mm max |

## Hangrollen, geleiders en scharnieren:

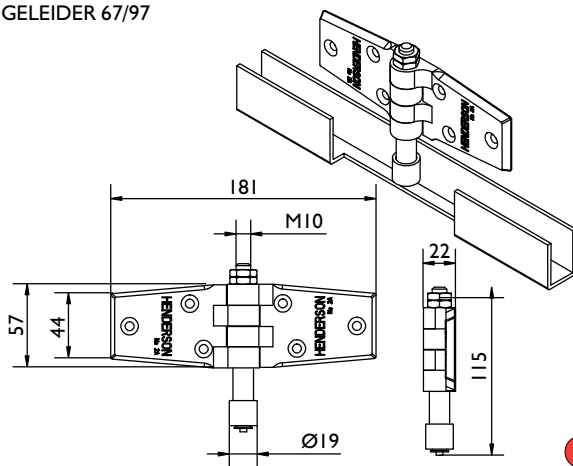
HANGROL 62A



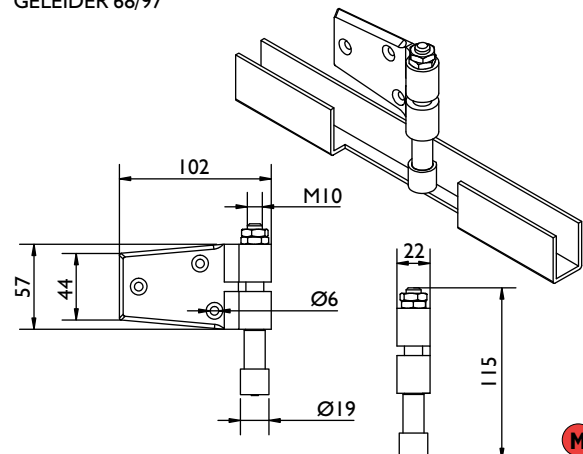
HANGROL 63A



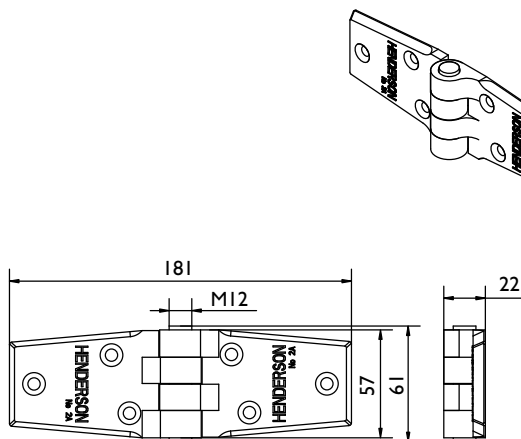
GELEIDER 67/97



GELEIDER 68/97



SCHARNIER 65



30I