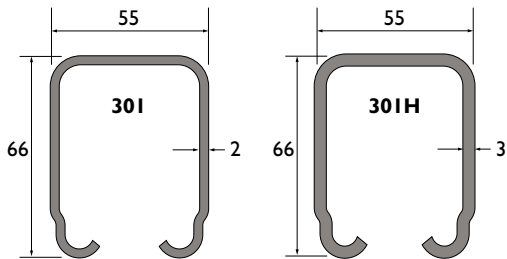


System 30I & 30IH

universele onderdelen

30I

Rail:



Model: 30I & 30IH

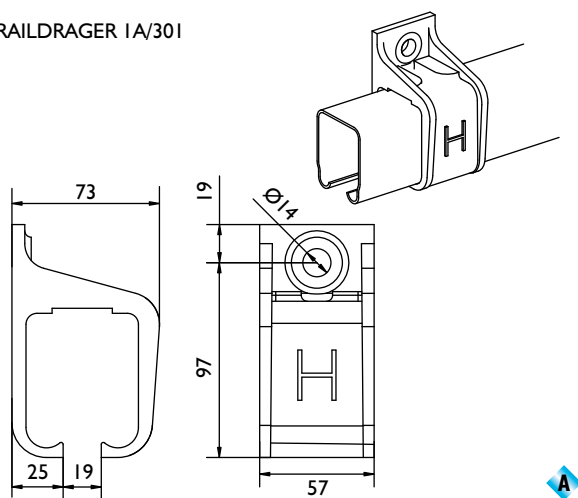
Materiaal: koudgewalst staal, gegalvaniseerd volgens sendzimir procédé.

Lengtes: 2000, 3000, 4000, 5000 en 6000mm

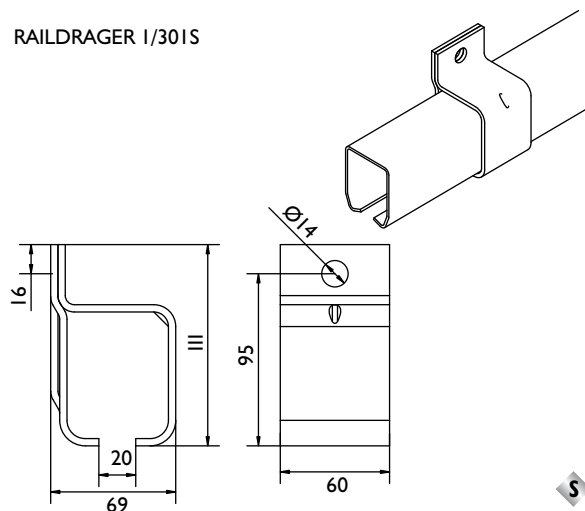
Bevestigingsgaten: geen

Raildragers - wandbevestiging:

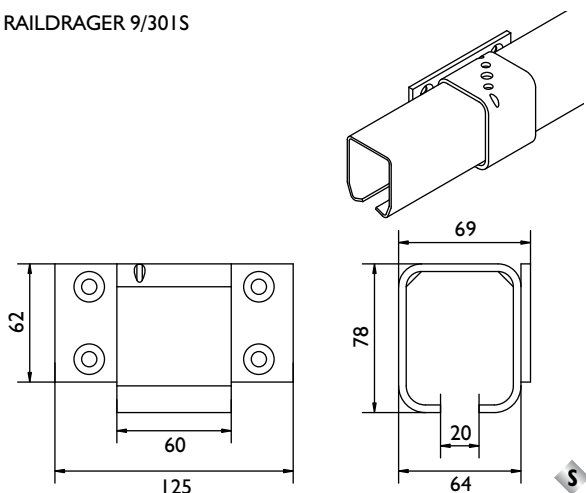
RAILDRAGER 1A/30I



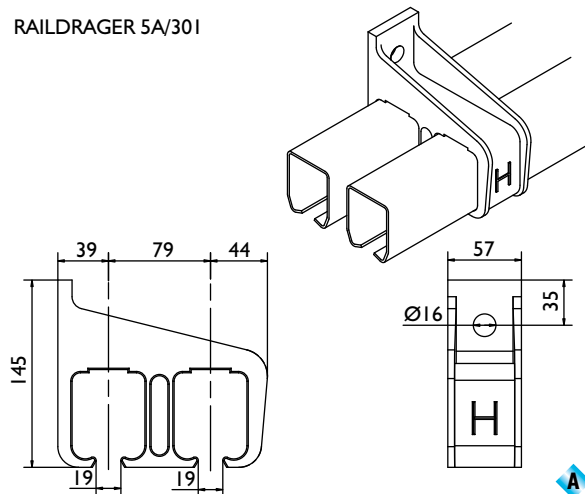
RAILDRAGER 1/30IS



RAILDRAGER 9/30IS



RAILDRAGER 5A/30I



Legenda:

- | | |
|----------------------------------|--------------------------|
| H = Houten deur | S = Staal |
| S = Stalen deur | A = Aluminium |
| M = Messing geleidewielen | S = Stalen wielen |
| | N = Nylon wielen |

Opmerking:

Verbindings-raildragers worden aanbevolen op elke railverbinding, bij het specificeren de letter "X" toevoegen.

Toevoeging **C** = gesloten raildrager
 Toevoeging **LC** = links gesloten raildrager
 Toevoeging **RC** = rechts gesloten raildrager

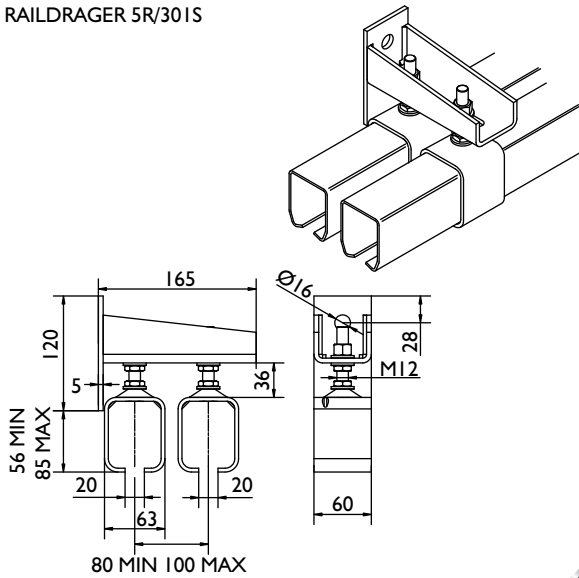
Gesloten raildragers dienen aan beide eind van de totale railbaan te worden gemonteerd en dienen uitsluitend voor het afsluiten van de rail, niet als deurbuffer gebruiken.

System 30I & 30IH

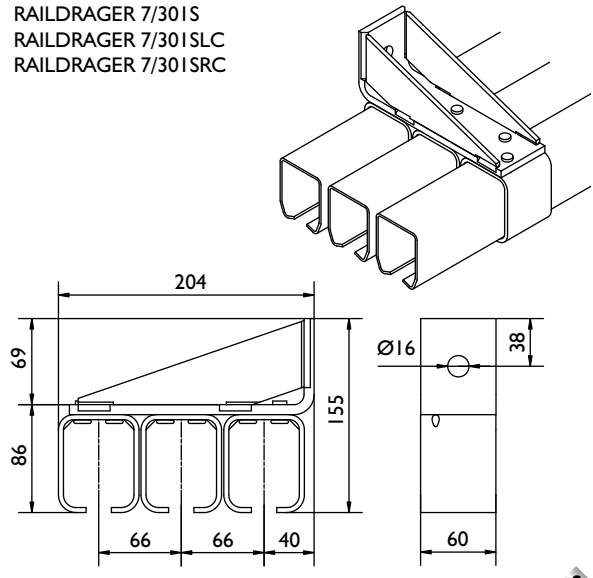
universele onderdelen

Raildragers - wandbevestiging:

RAILDRAGER 5R/30IS



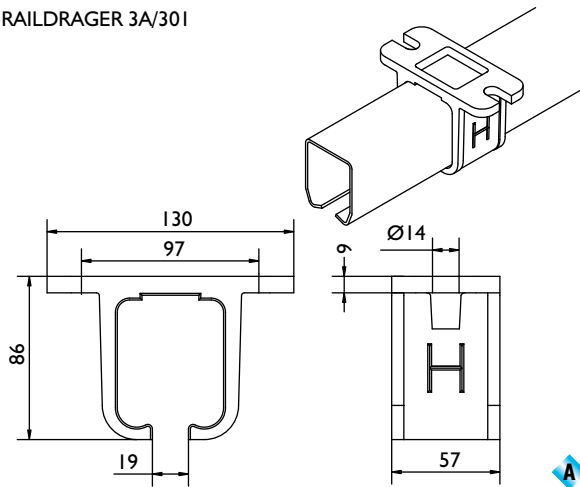
RAILDRAGER 7/30IS
RAILDRAGER 7/30ISLC
RAILDRAGER 7/30ISRC



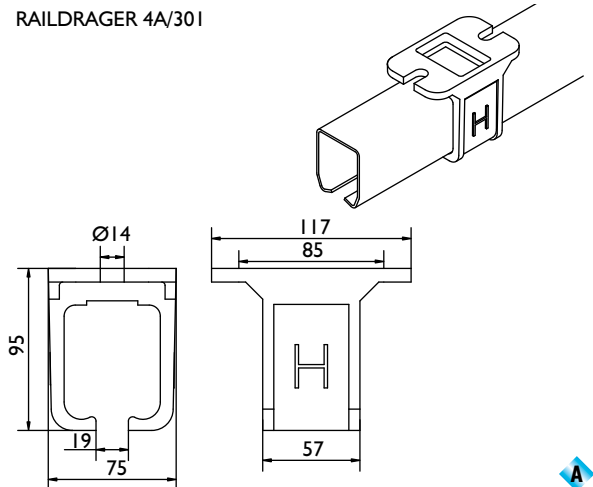
30I

Raildragers - plafondbevestiging:

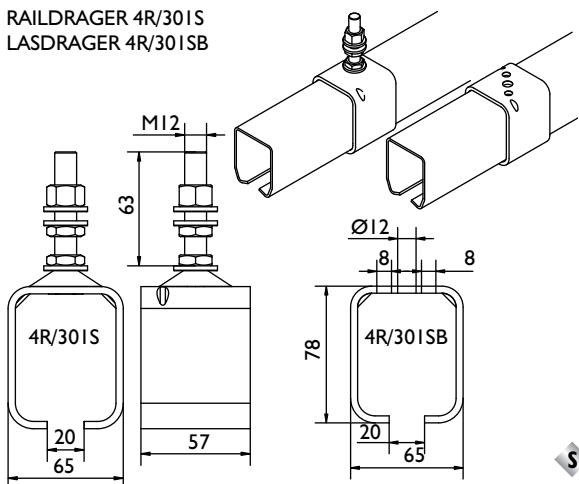
RAILDRAGER 3A/30I



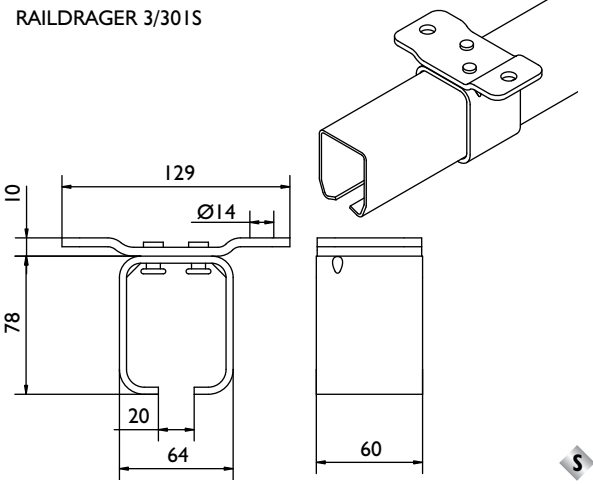
RAILDRAGER 4A/30I



RAILDRAGER 4R/30IS
LASDRAGER 4R/30ISB



RAILDRAGER 3/30IS

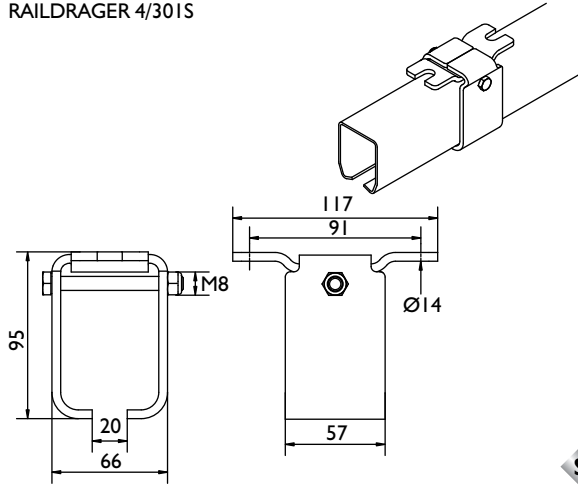


System 30I & 30IH

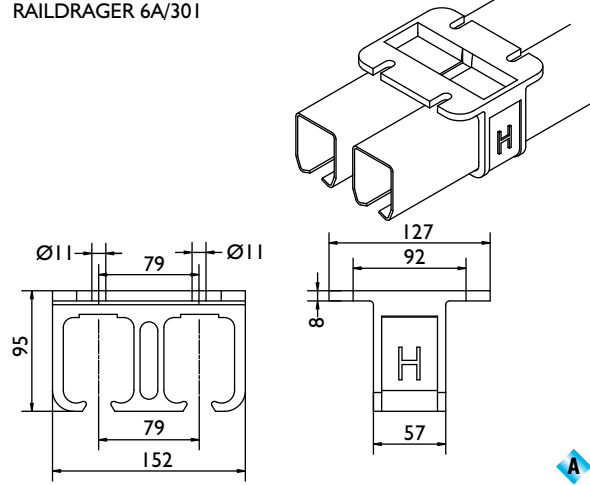
universele onderdelen

Raildragers - plafondbevestiging:

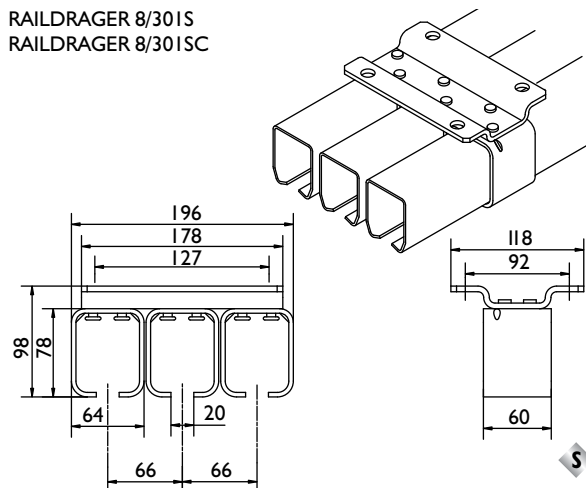
RAILDRAGER 4/30IS



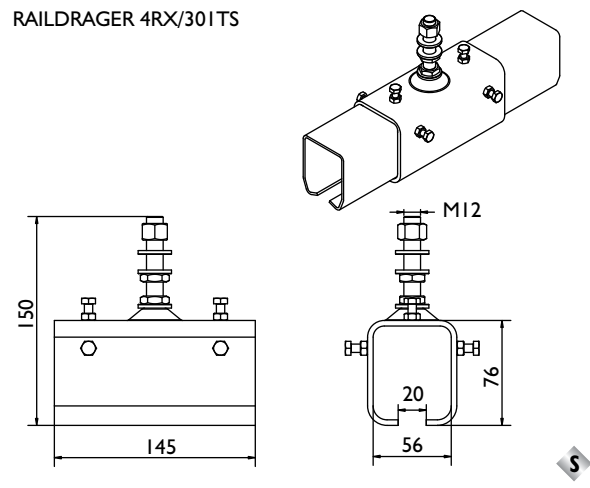
RAILDRAGER 6A/30I



RAILDRAGER 8/30IS
RAILDRAGER 8/30ISC

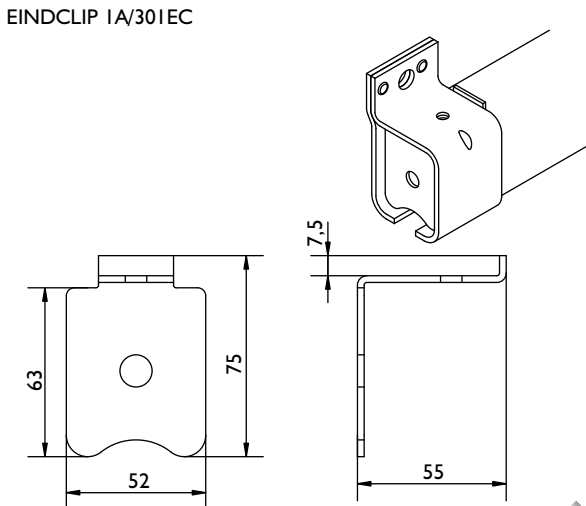


RAILDRAGER 4RX/30ITS



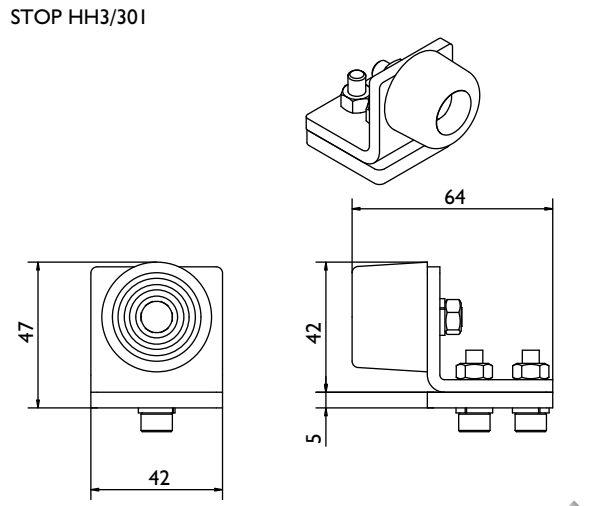
Specials:

EINDCLIP 1A/30IEC



Eindclip ter afdichting en blokkering van de rail.
Bruikbaar i.c.m. raildrager: 1, 1A, 3A, 4A, 5A, 6 en 9A

STOP HH3/30I



Voor bevestiging in de rail, staal gegalvaniseerd met
stootbuffer.

System 30I & 30IH

tangent vouwdeurbeslag

System 30I	55kg max	45-55mm	900mm max	3300mm max
System 30IH	70kg max	45-55mm	900mm max	3600mm max

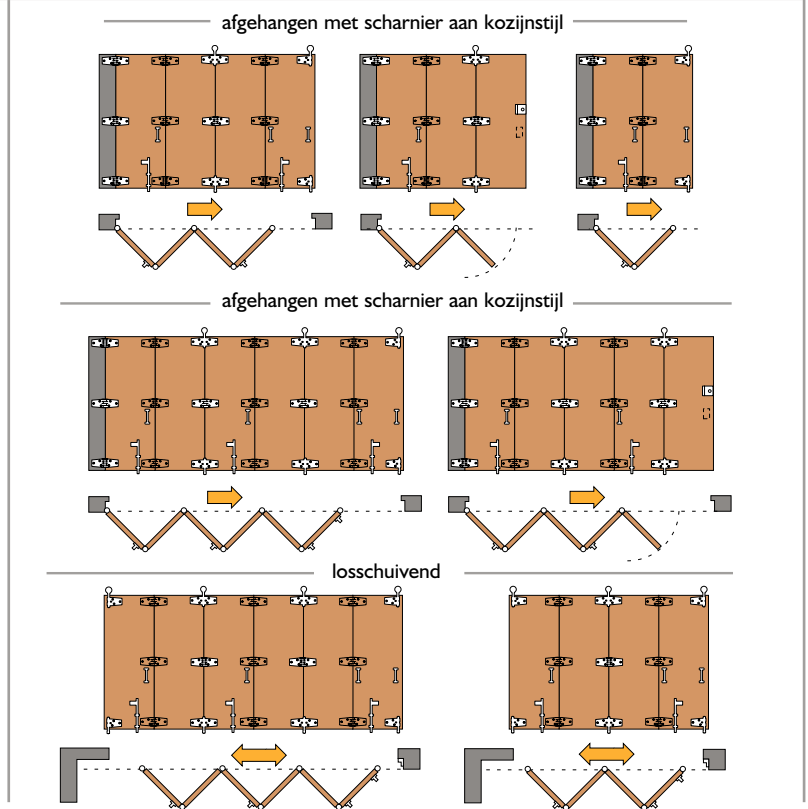
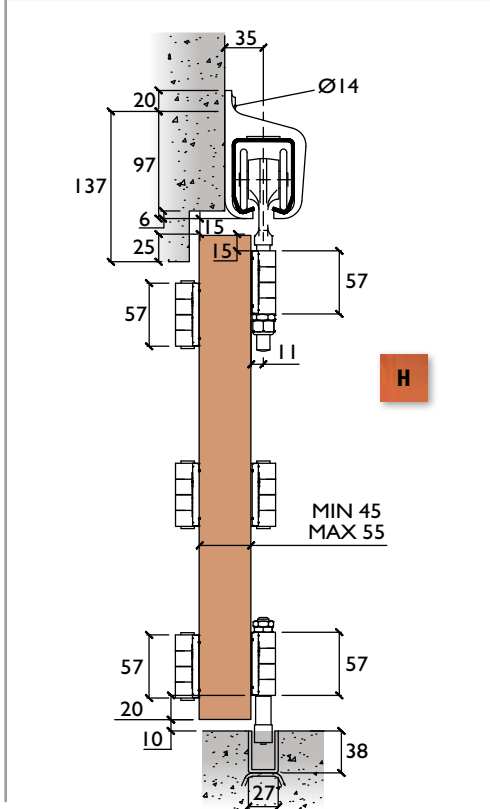
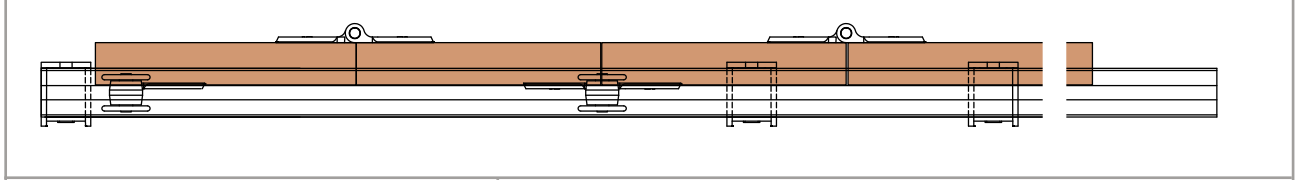
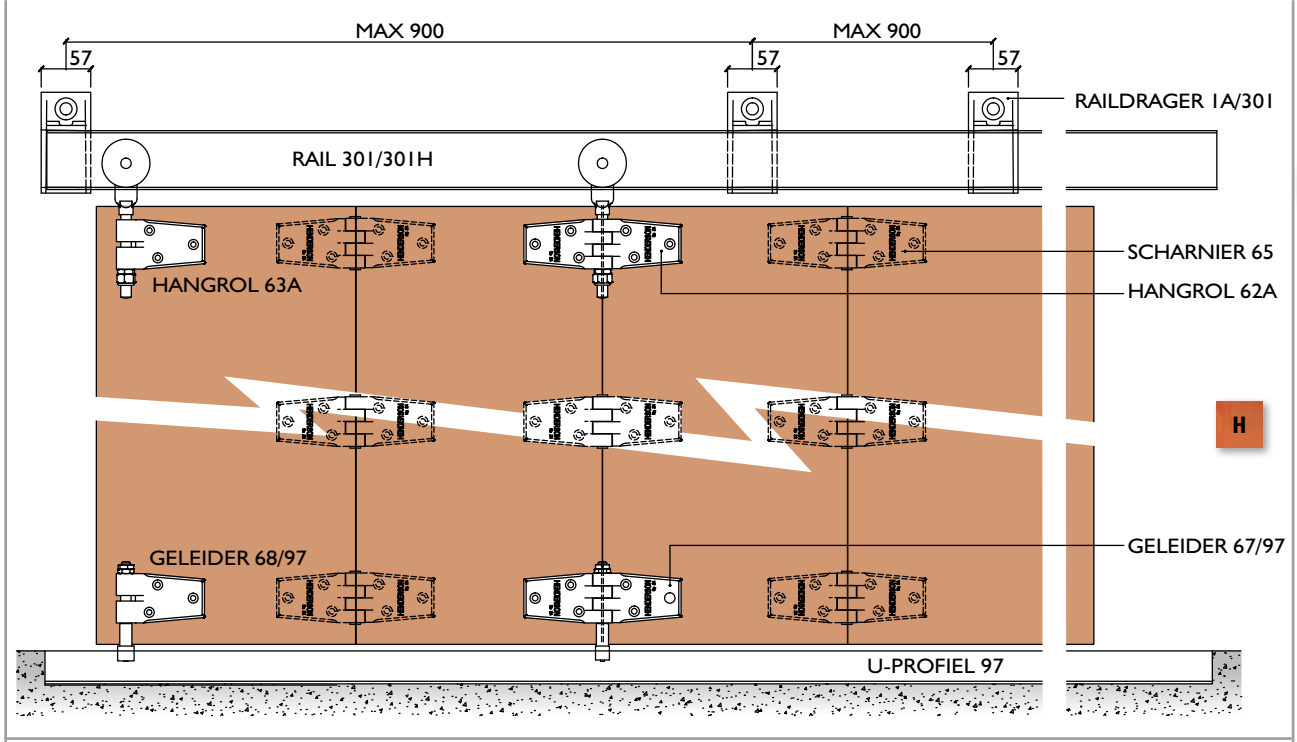
30I

H

H

31

System opstelling:



System 30I & 30IH

tangent vouwdeurbeslag

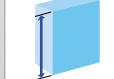
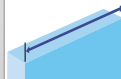
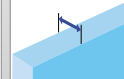
System 30I

55kg max

45-55mm

900mm max

3300mm max



System 30IH

70kg max

45-55mm

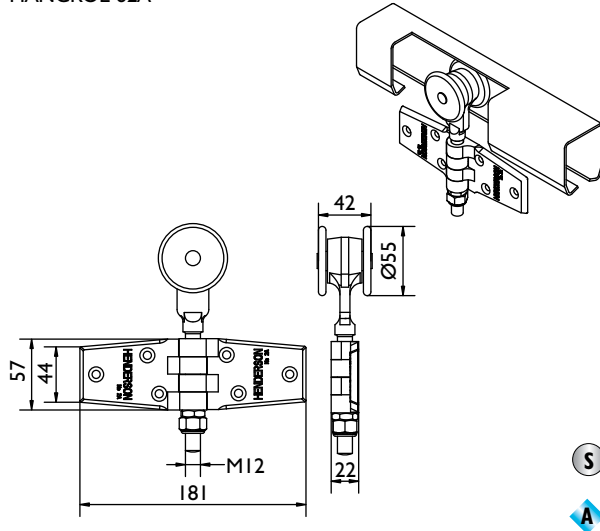
900mm max

3600mm max

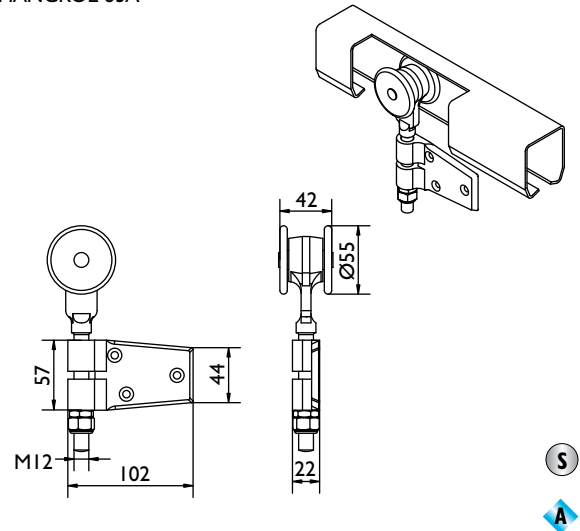


Hangrollen, geleiders en scharnieren:

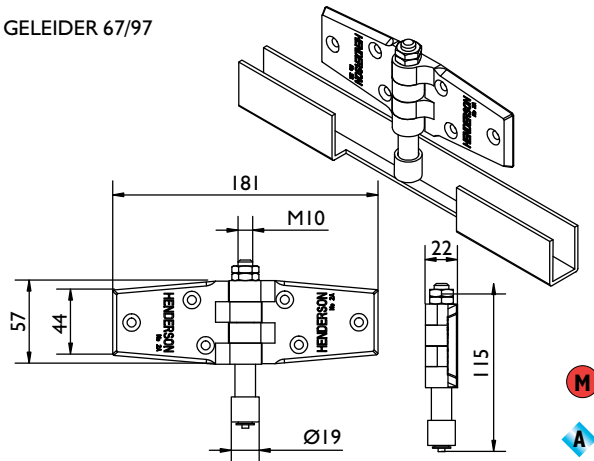
HANGROL 62A



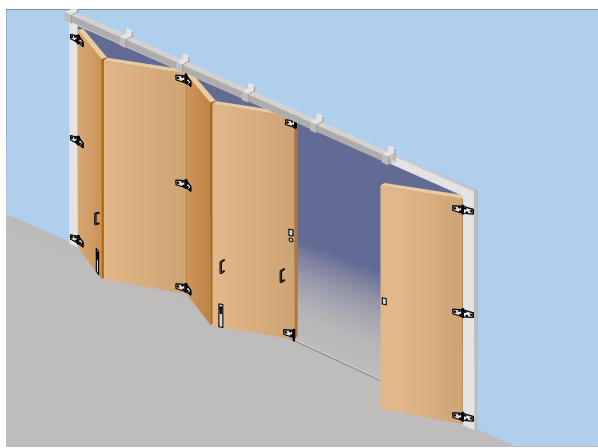
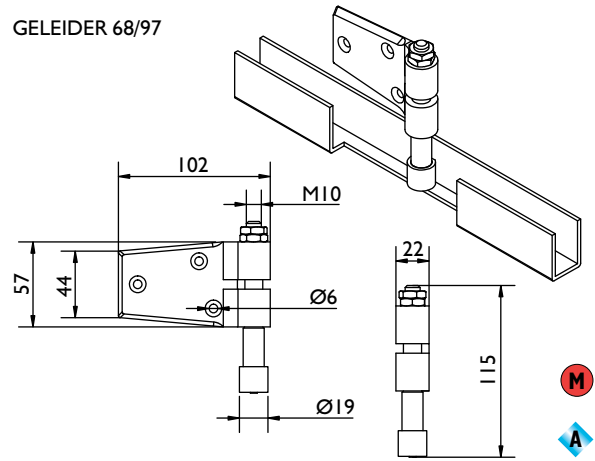
HANGROL 63A



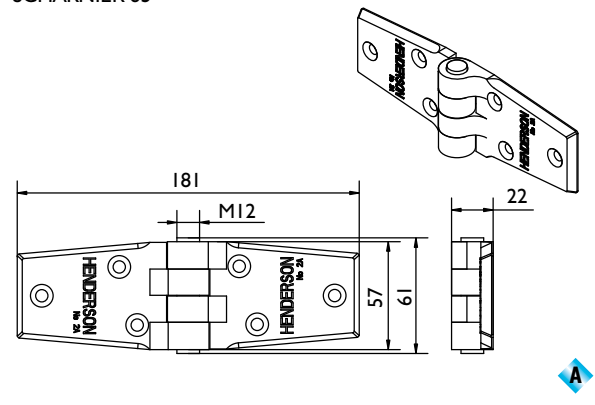
GELEIDER 67/97



GELEIDER 68/97



SCHARNIER 65



Opmerking:

H.o.h. afstanden scharnierpunten dienen gelijk te zijn!
 Voor een soepele werking maximaal acht deurvleugels afhangen,
 alternatief kunnen losschuivende garnituren worden toegepast (minimaal 4 deurvleugels).

Desgewenst kan van één van de deurvleugels, oneven aantal, een loopdeur worden gemaakt.
 Op de plaats waar het samengevouwen deurpakket hangt, moet een extra raildrager gemonteerd zijn.

30I