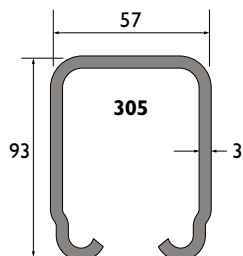


System 305

universele onderdelen

Rail:



Model: 305

Materiaal: koudgewalst staal, gegalvaniseerd volgens sendzimir procédé

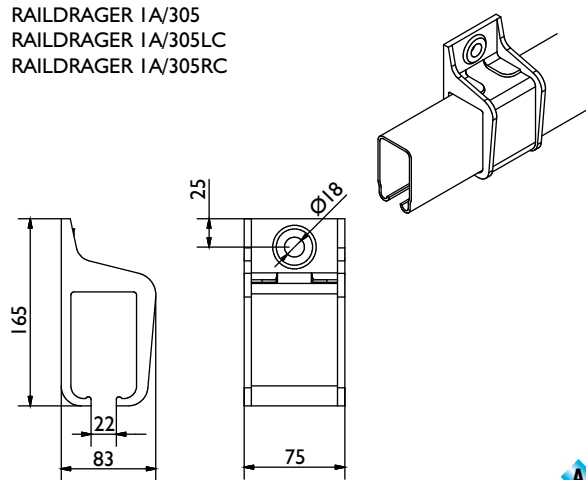
Lengtes: 2000, 3000, 4000, 5000 en 6000mm

Bevestigingsgaten: geen

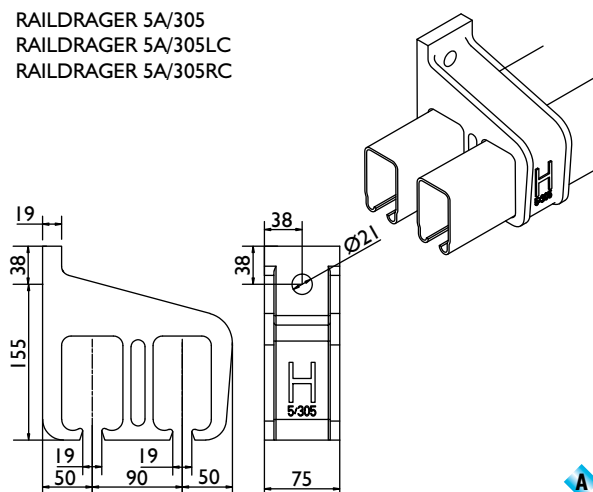
305

Raildragers - wandbevestiging:

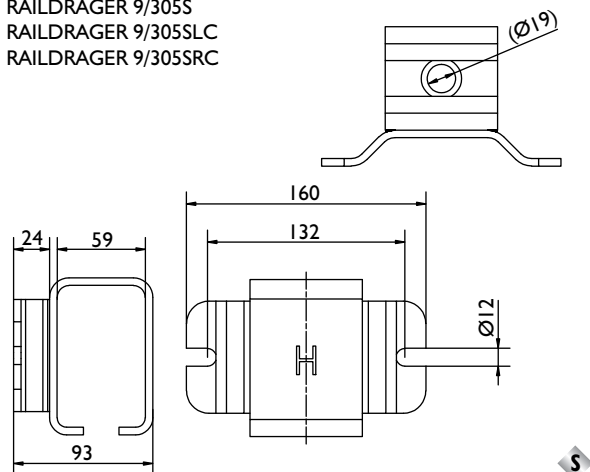
RAILDRAGER 1A/305
RAILDRAGER 1A/305LC
RAILDRAGER 1A/305RC



RAILDRAGER 5A/305
RAILDRAGER 5A/305LC
RAILDRAGER 5A/305RC



RAILDRAGER 9/305S
RAILDRAGER 9/305SLC
RAILDRAGER 9/305SRC



Legenda:

- | | |
|----------------------------------|--------------------------|
| H = Houten deur | S = Staal |
| S = Stalen deur | A = Aluminium |
| M = Messing geleidewielen | S = Stalen wielen |
| | N = Nylon wielen |

Opmerking:

Verbindings-raildragers worden aanbevolen op elke railverbinding. Bij het specificeren de letter "X" toevoegen.

Toevoeging **C** = gesloten raildrager
Toevoeging **LC** = links gesloten raildrager
Toevoeging **RC** = rechts gesloten raildrager

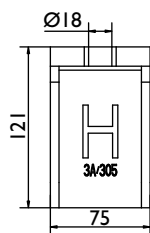
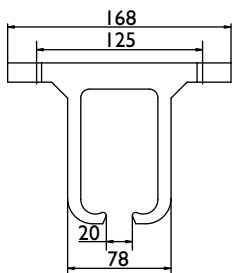
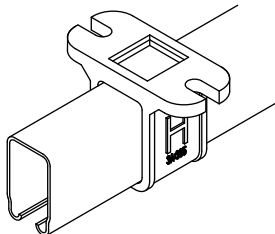
Gesloten raildragers dienen aan beide einden van de totale railbaan te worden gemonteerd en dienen uitsluitend voor het afsluiten van de rail, niet als deurbuffer gebruiken.

System 305

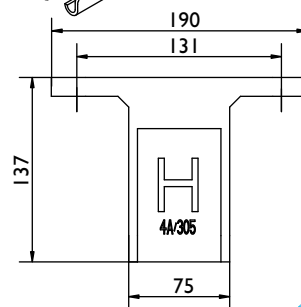
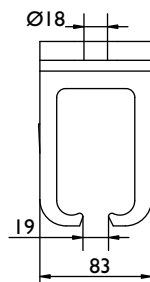
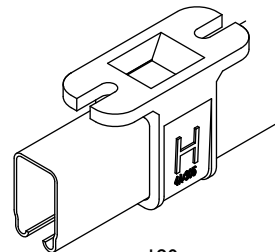
universele onderdelen

Raildragers - plafondbevestiging:

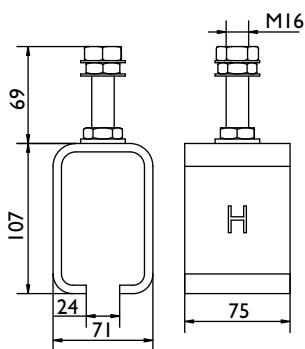
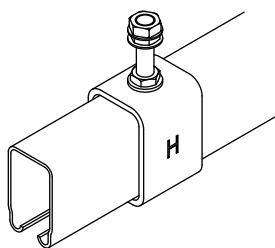
RAILDRAGER 3A/305
RAILDRAGER 3A/305C



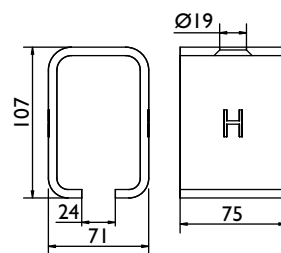
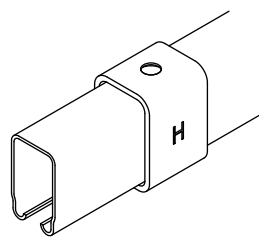
RAILDRAGER 4A/305
RAILDRAGER 4A/305C



RAILDRAGER 4R/305
RAILDRAGER 4R/305SC

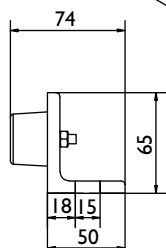
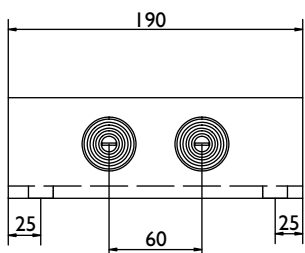
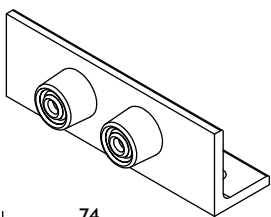


LASDRAGER 4R/305SB

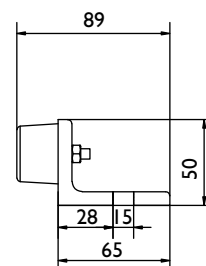
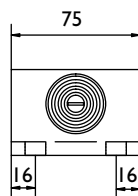
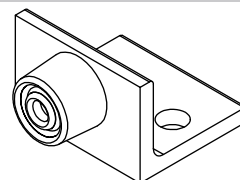


Specials:

STOP 107

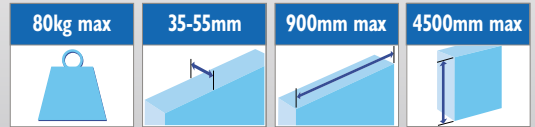


STOP 109

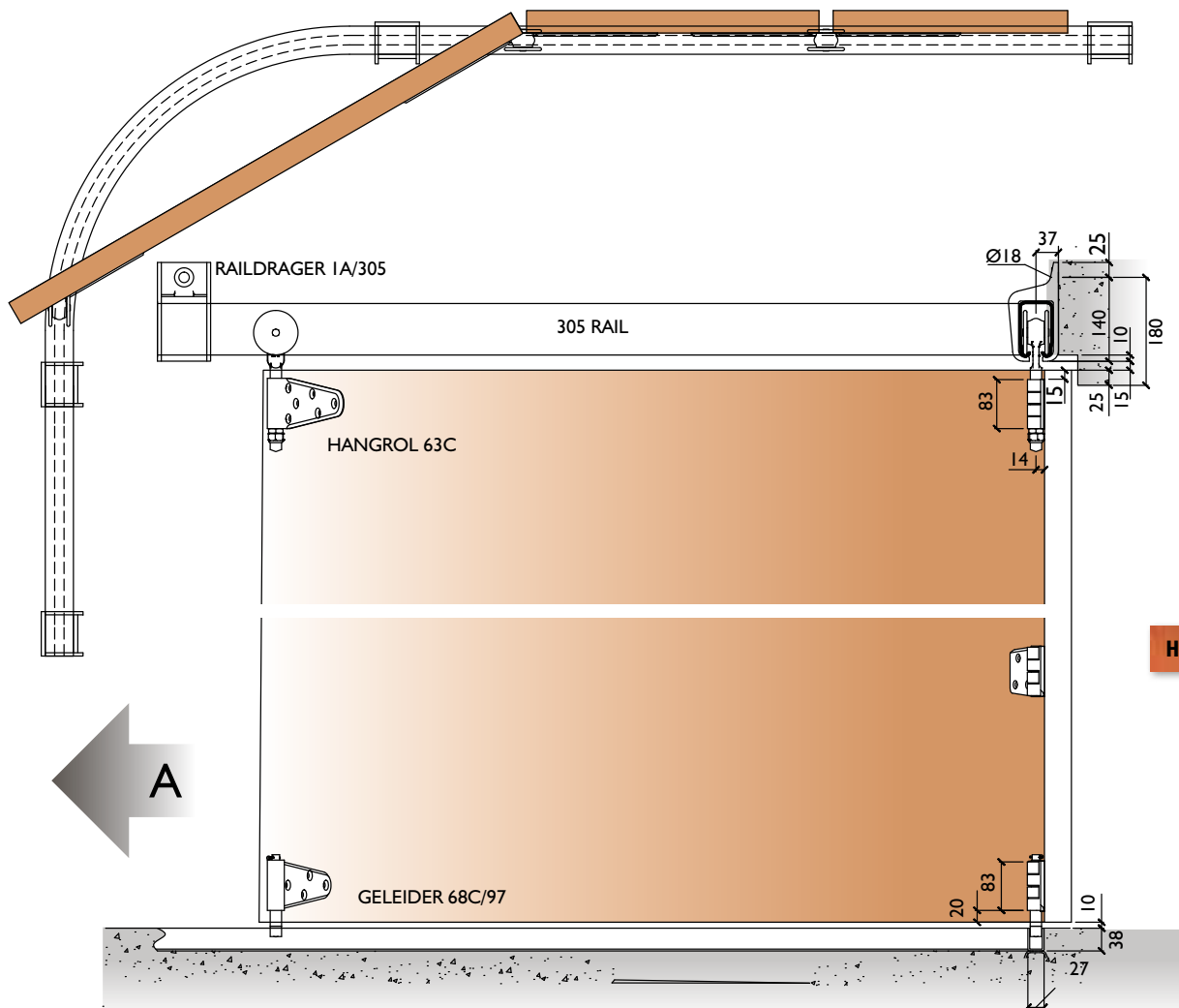
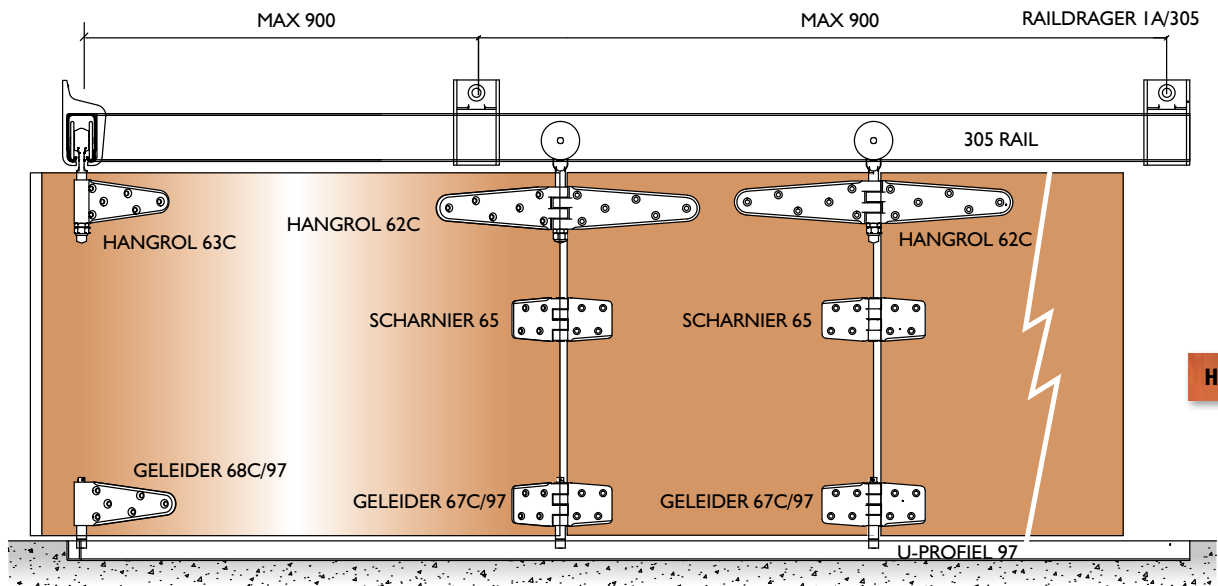


System 305

tangent beslag
om-de-hoek schuivend



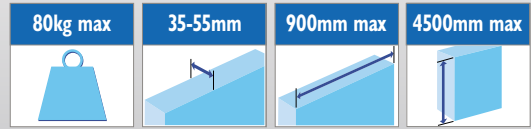
System opstelling:



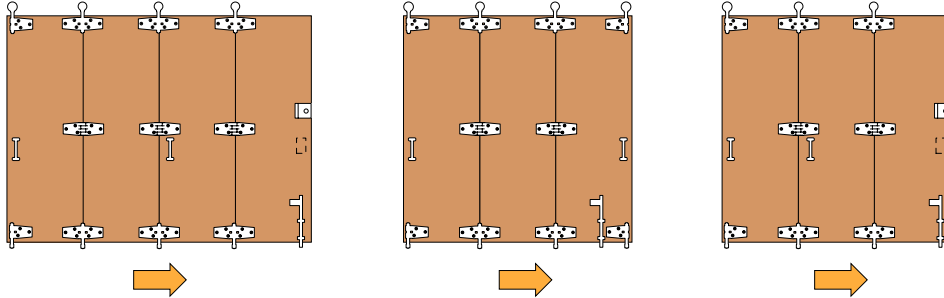
Aanzicht in de richting van pijl A

System 305

tangent beslag
om-de-hoek schuivend

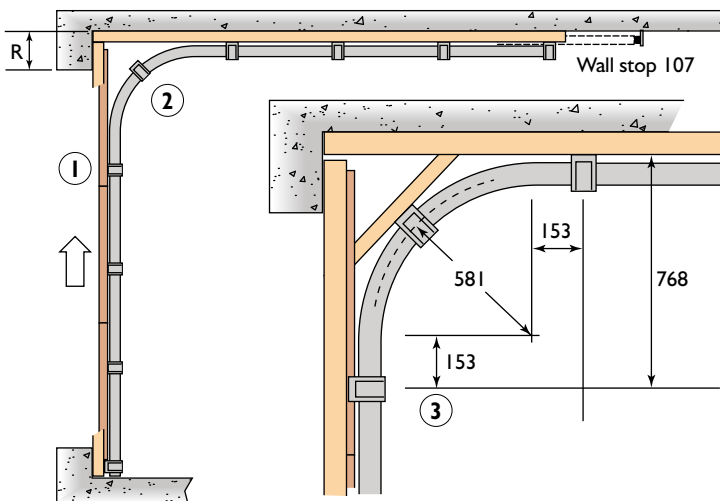


Voorbeeld opstelling:



305

Toelichting:



- 1 Als penant "R" minder is dan 685mm is een draaideur onder de bocht noodzakelijk.
- 2 Slechts 1 open raildrager in het midden van de bocht.
- 3 Recht stuk van 152mm op elk bochteinde.

Opmerking:

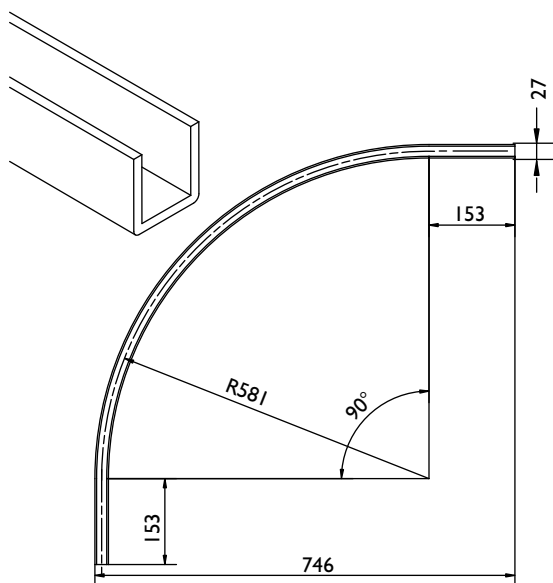
Deuren schuiven weg langs de zijmuur en laten de gehele opening vrij, naar één of beide kanten schuivend.

De eerste deurvleugel onder de bocht kan als draaideur worden toegepast.

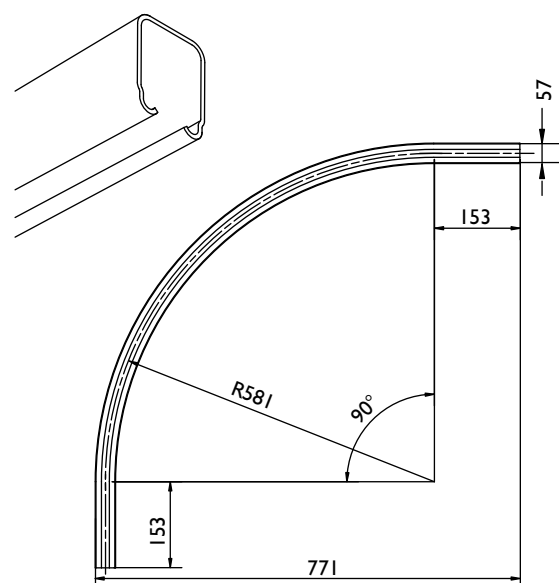
Bij hoge en zware deuren dient een draaideur, als deel van het garnituur, te worden vermeden. Beter is deze apart aan de kozijnstijl af te hangen.

Boven - / onderbocht:

ONDERBOCHT 601/97

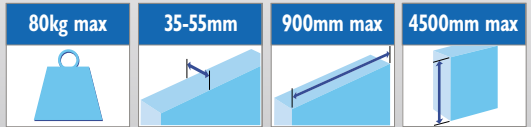


BOVENBOCHT 600D



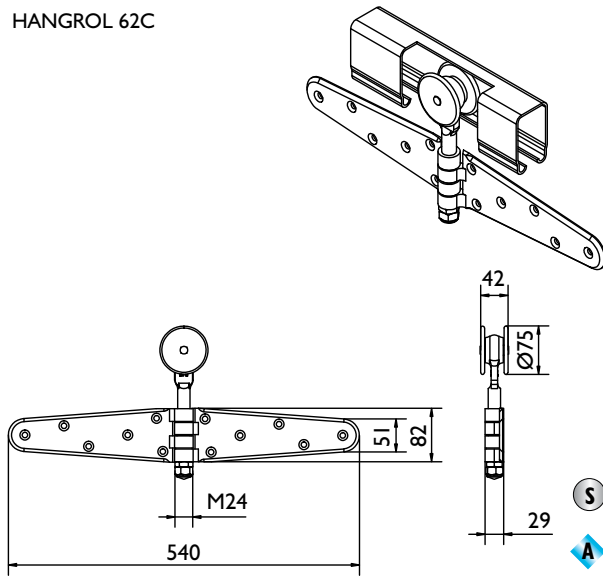
System 305

tangent beslag
om-de-hoek schuivend

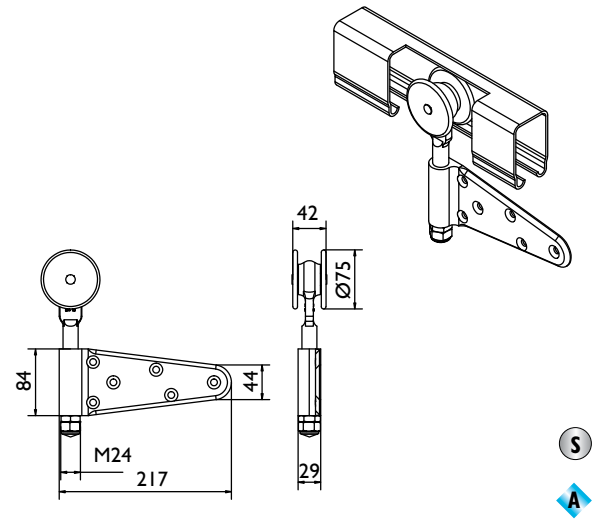


Hangrollen, geleiders en scharnieren:

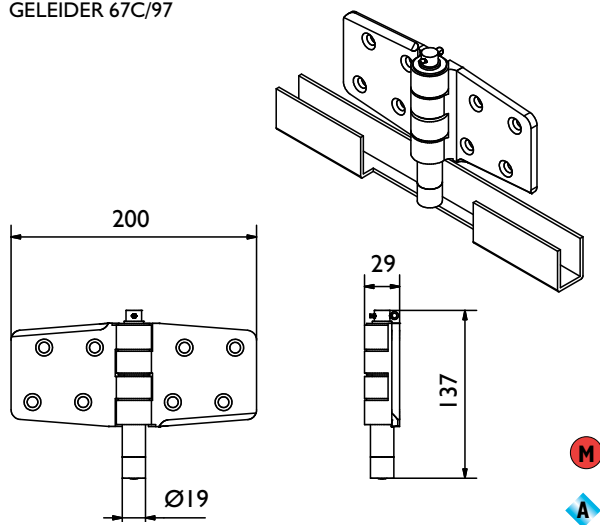
HANGROL 62C



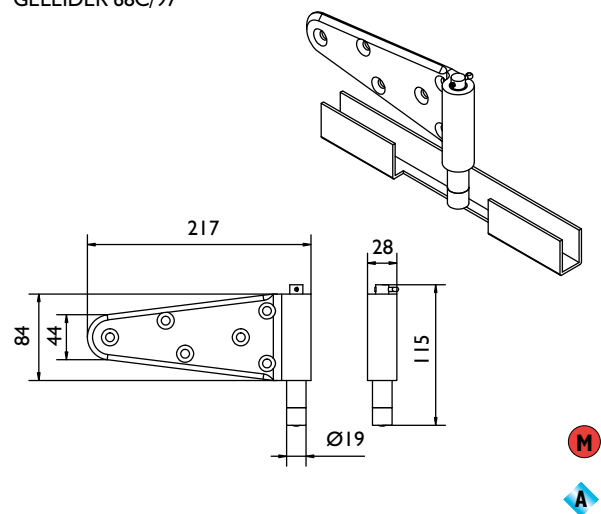
HANGROL 63C



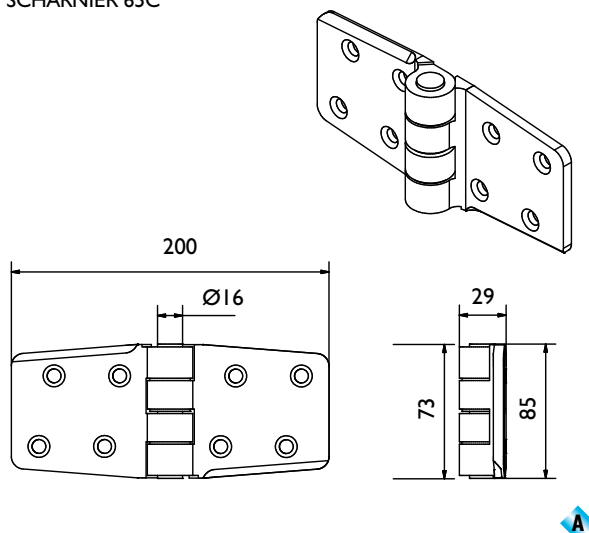
GELEIDER 67C/97



GELEIDER 68C/97



SCHARNIER 65C



305